

2023 Training Ship Oshoro Maru Bering/Chukchi Sea observations

Leg 1 Hakodate-Nome, June 10-25
 Leg 2 Nome-Nome, June 28 – July 8
 Leg 3 Nome-Hakodate, July 12 – Aug. 3

Area: region B (region A is for case that Oshoro maru cannot call at ports in the US due to the COVID-19 pandemic)

Bottom sampling(see next page)

- canvas kite trawl
- Sediment multiple corer
- G.S. type core sampler (Asyura)

Canvas kite trawl net to be used for
2023 Oshoro-maru cruise

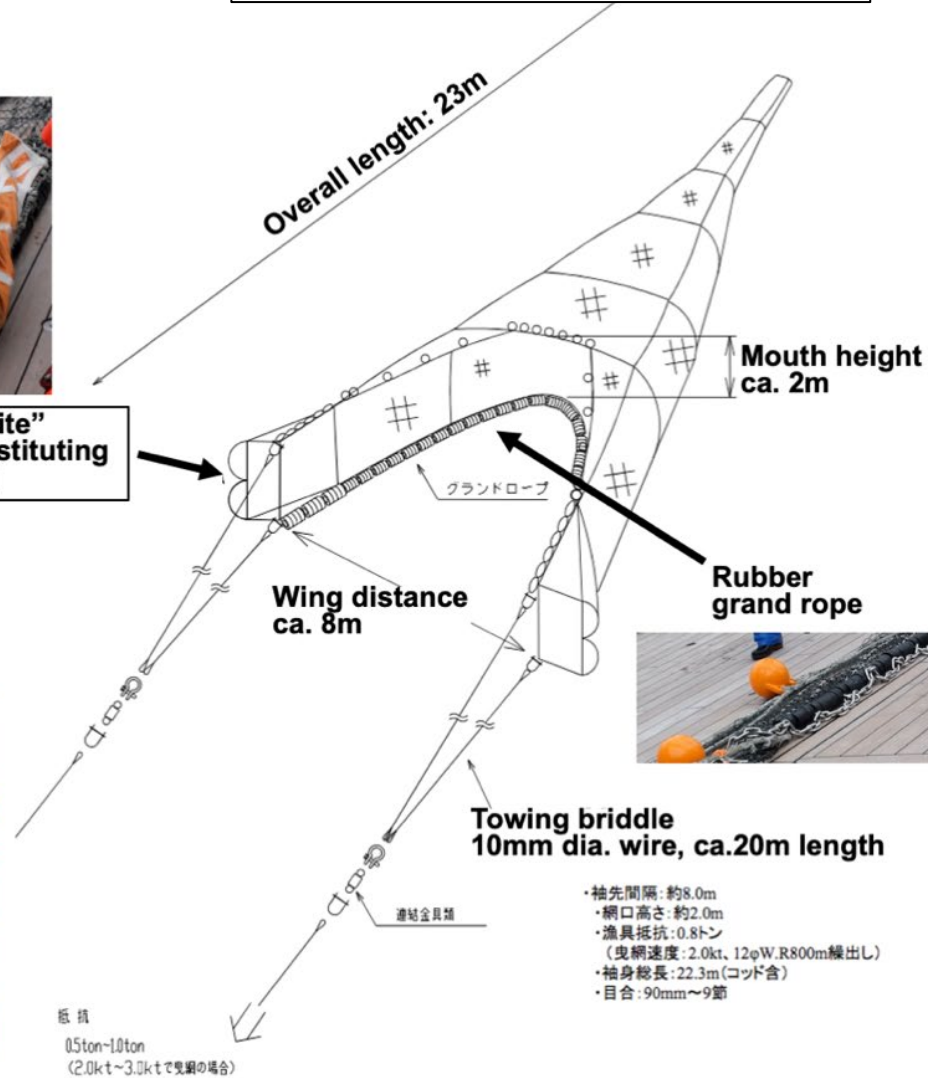


Patented "Para Kite"
1 m² canvas, substituting
metal otter board

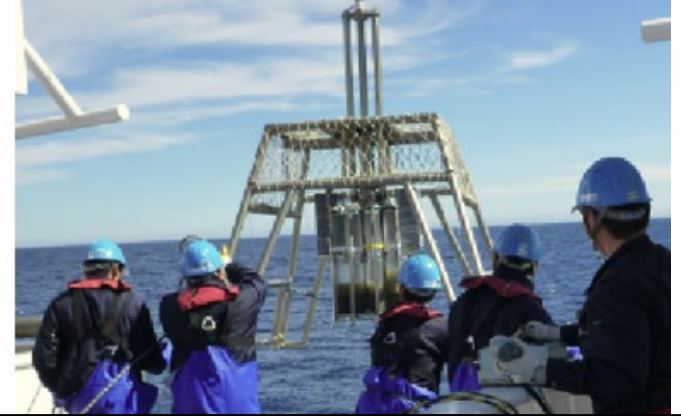
Whole image of canvas kite trawl net



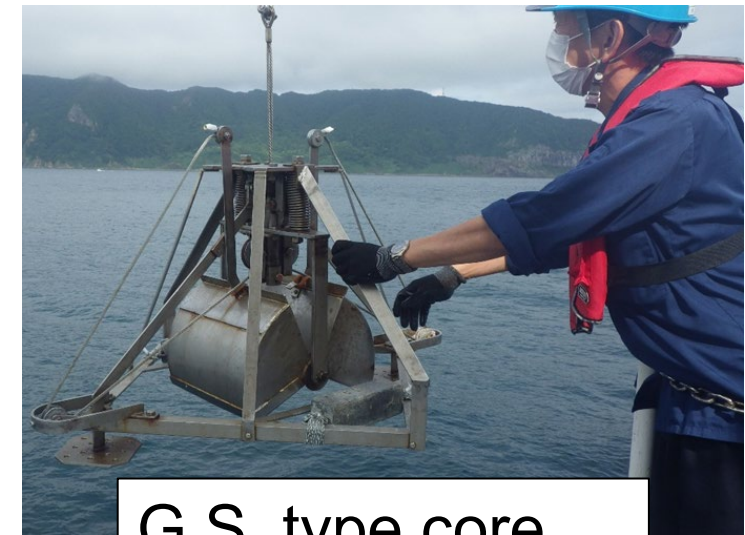
Canvas kite trawl net



Mud sampling

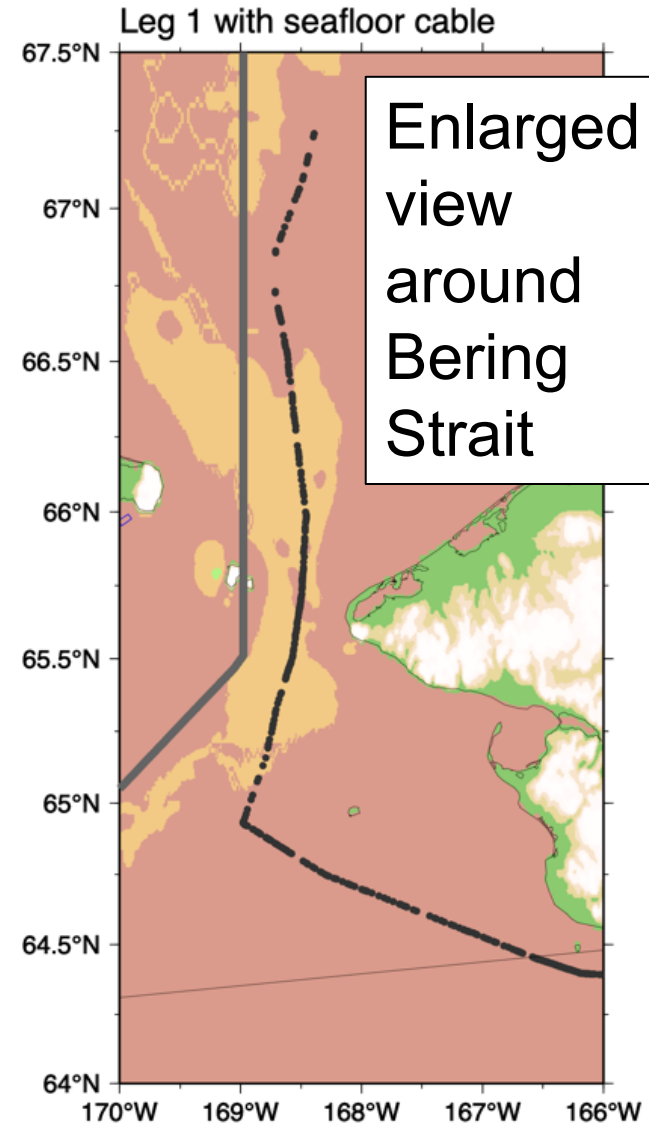
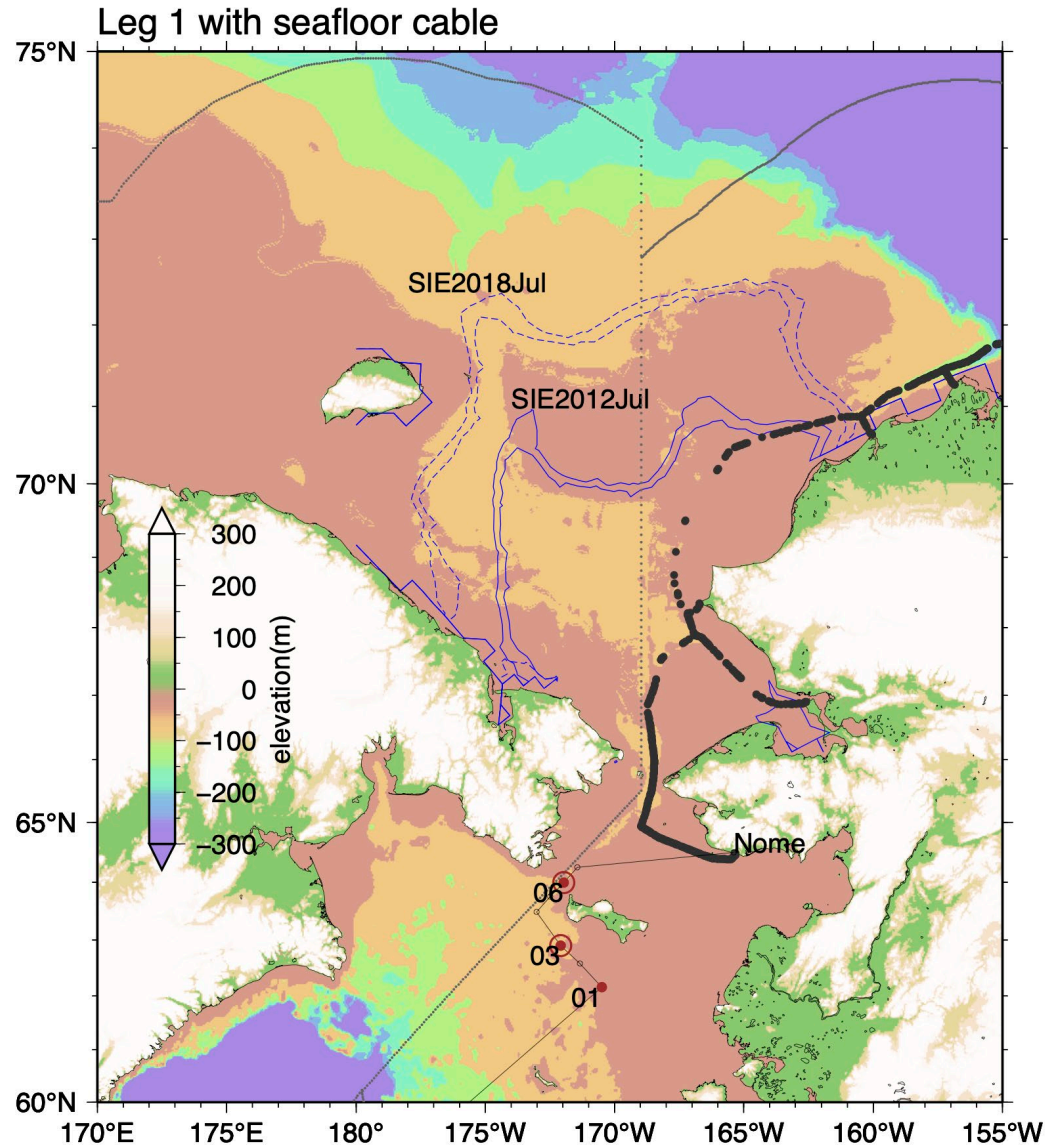


Sediment multiple corer



G.S. type core
sampler (Asyura)

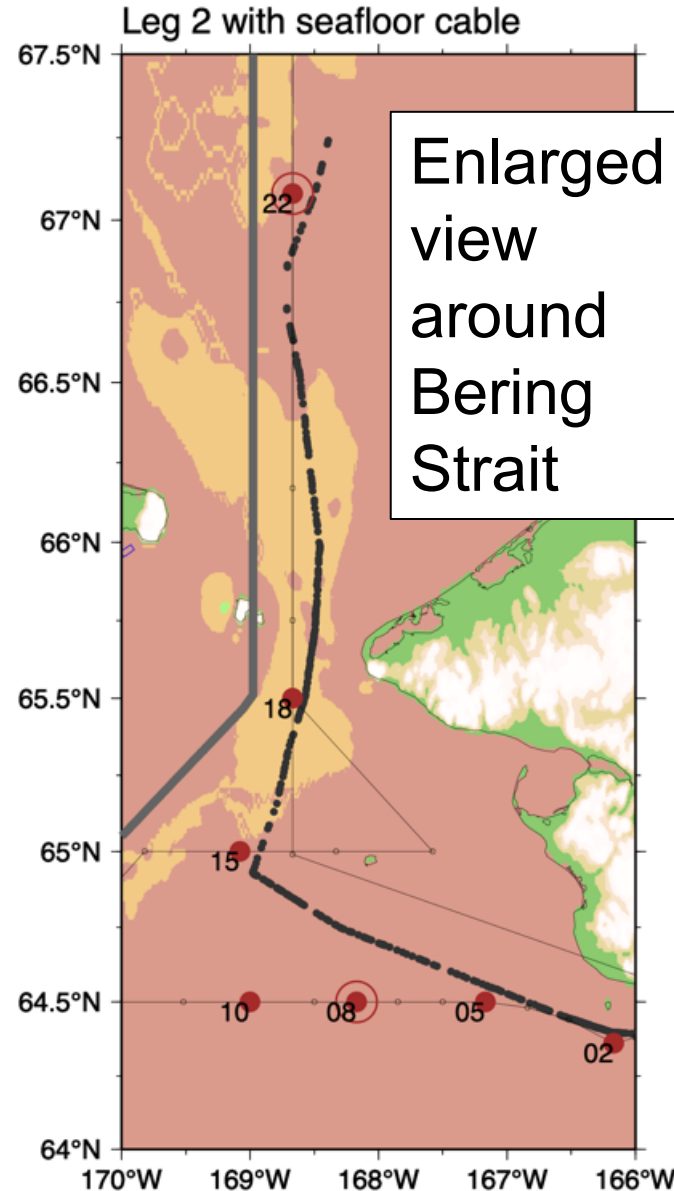
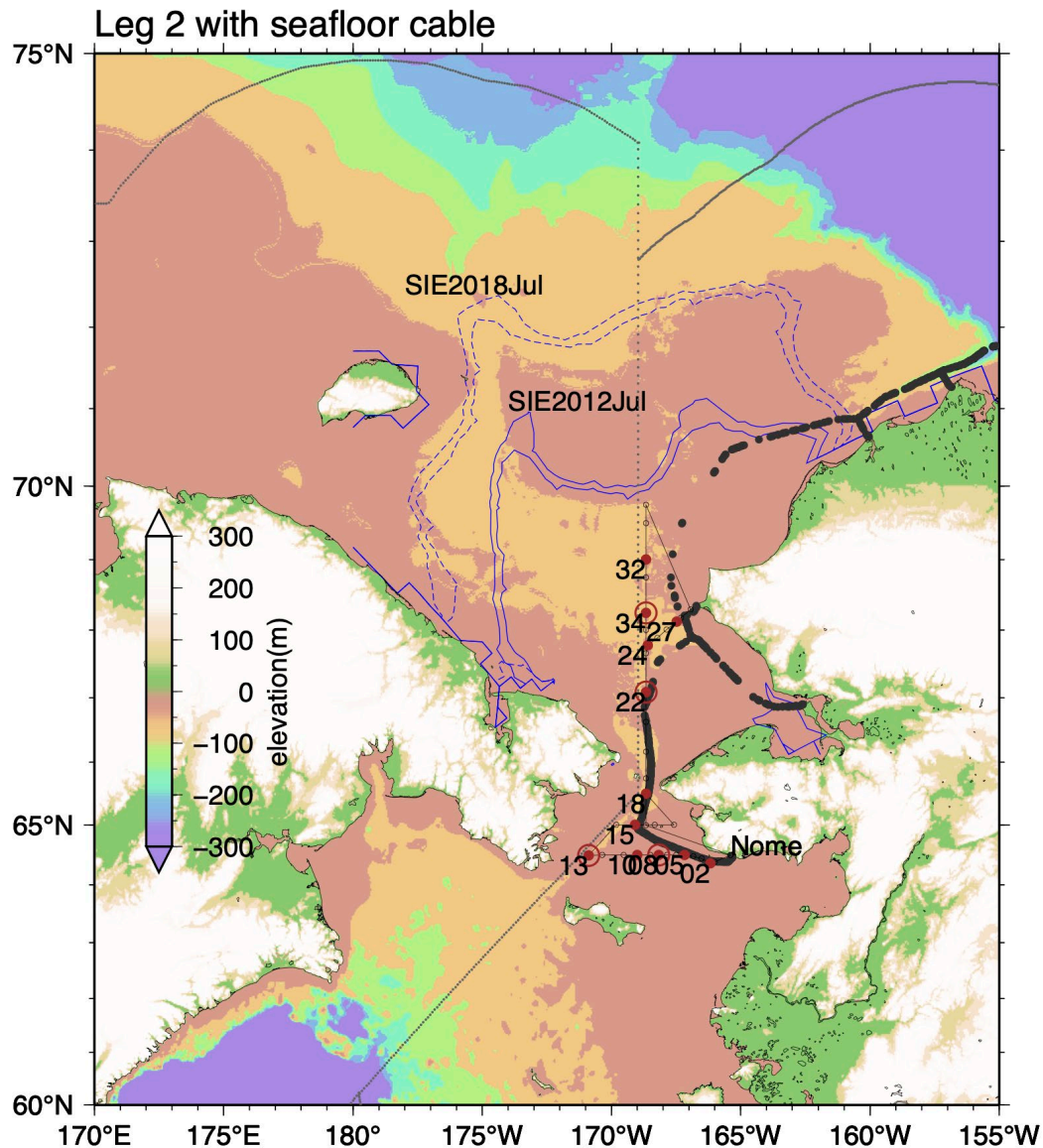
Locations of Leg 1 (Hakodate-Nome) observation station and submarine cable



- Trawl station
- Mud sampling station
- Other station
- Submarine cable

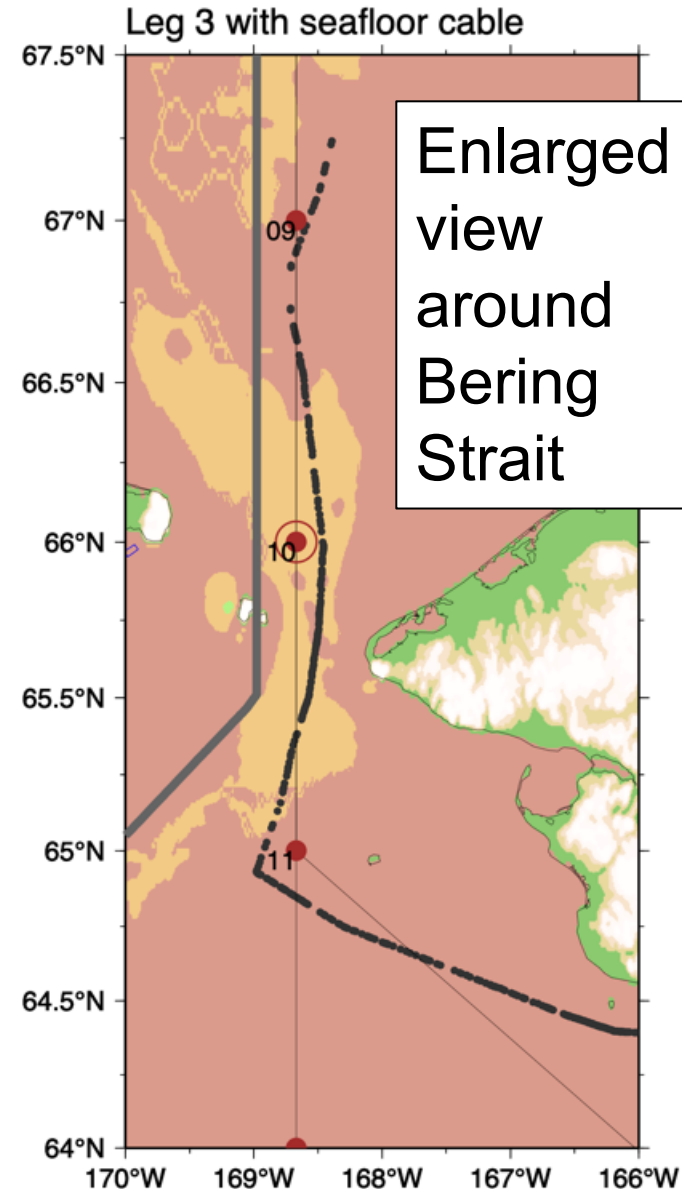
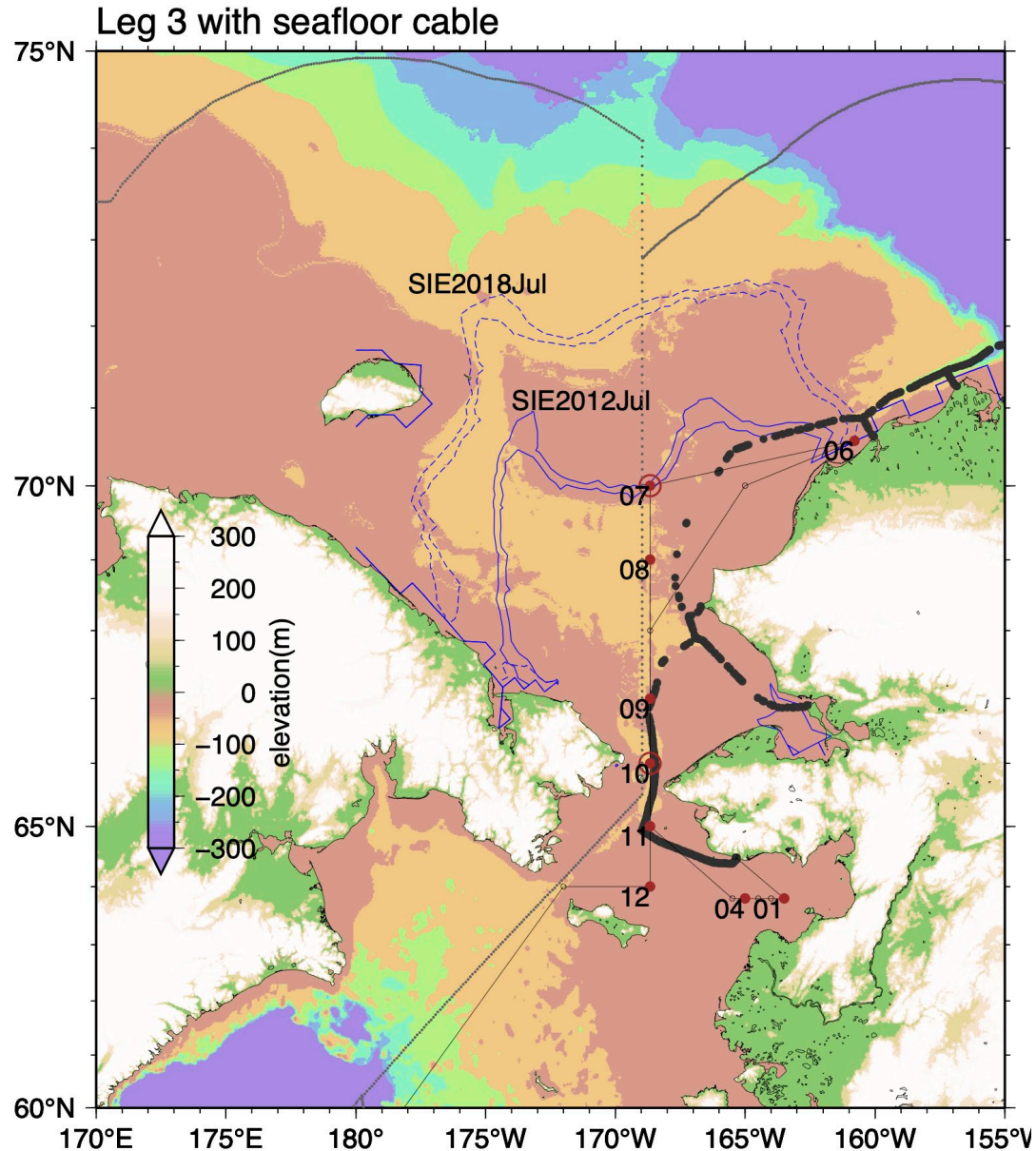
No trawl and mud sampling stations near submarine cable

Locations of Leg 2 (Nome-Nome) observation station and submarine cable



- Trawl station
- Mud sampling station
- Other station
- Submarine cable

Locations of Leg 3 (Nome-Hakodate) observation station and submarine cable



- Trawl station
- Mud sampling station
- Other station
- Submarine cable

A mud sampling station 09 is 3-4 km away from submarine cable.