

Suspension of RUSALCA and move to focused NOAA DBO Program

Jacqueline M. Grebmeier¹ and Robert Pickart²

¹University of Maryland Center for Environmental Science, Chesapeake Biological
Laboratory, Solomons, Maryland, USA

²Woods Hole Oceanographic Institution, Woods Hole, Massachusetts

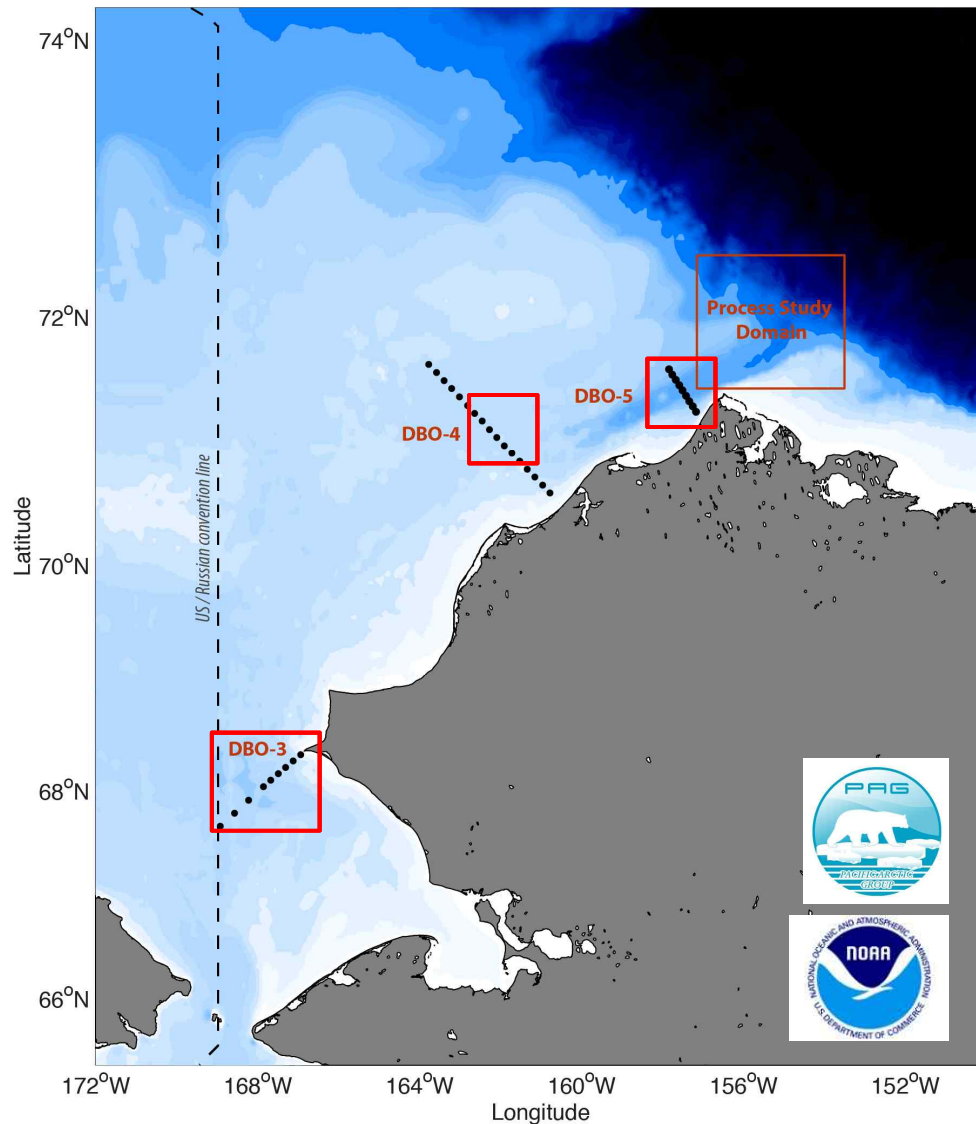
PACIFIC ARCTIC GROUP 2016 MEETING

OCTOBER 27, 2016
SOPHIA INTERNATIONAL HOTEL
QINGDAO, CHINA



<http://pag.arcticportal.org>

2017 DRAFT Plans DBO and Northern Chukchi Sea Shelf-Basin Exchange Study-NOAA Arctic Research Program (NOAA, UMCES, WHOI)-September 2017



Field Measurements: Standard DBO measurements and process studies (DBO and Barrow Canyon region):

- Physical: CTD and lowered ADCP
- Chemical: nutrients, oxygen-18, chlorophyll-a (Chl a), carbon components
- Biological: zooplankton (abundance and biomass, growth rates)
- Benthos: macrobenthos abundance, biomass and population structure,
- Sediment: organic carbon/nitrogen content, chl a content, grain size, Cs-137 and Pb-210 content; benthic oxygen uptake and nutrient exchange
- Upper trophic levels: marine mammal shipboard surveys