

ASSW 2016  
12-15 March Fairbanks USA

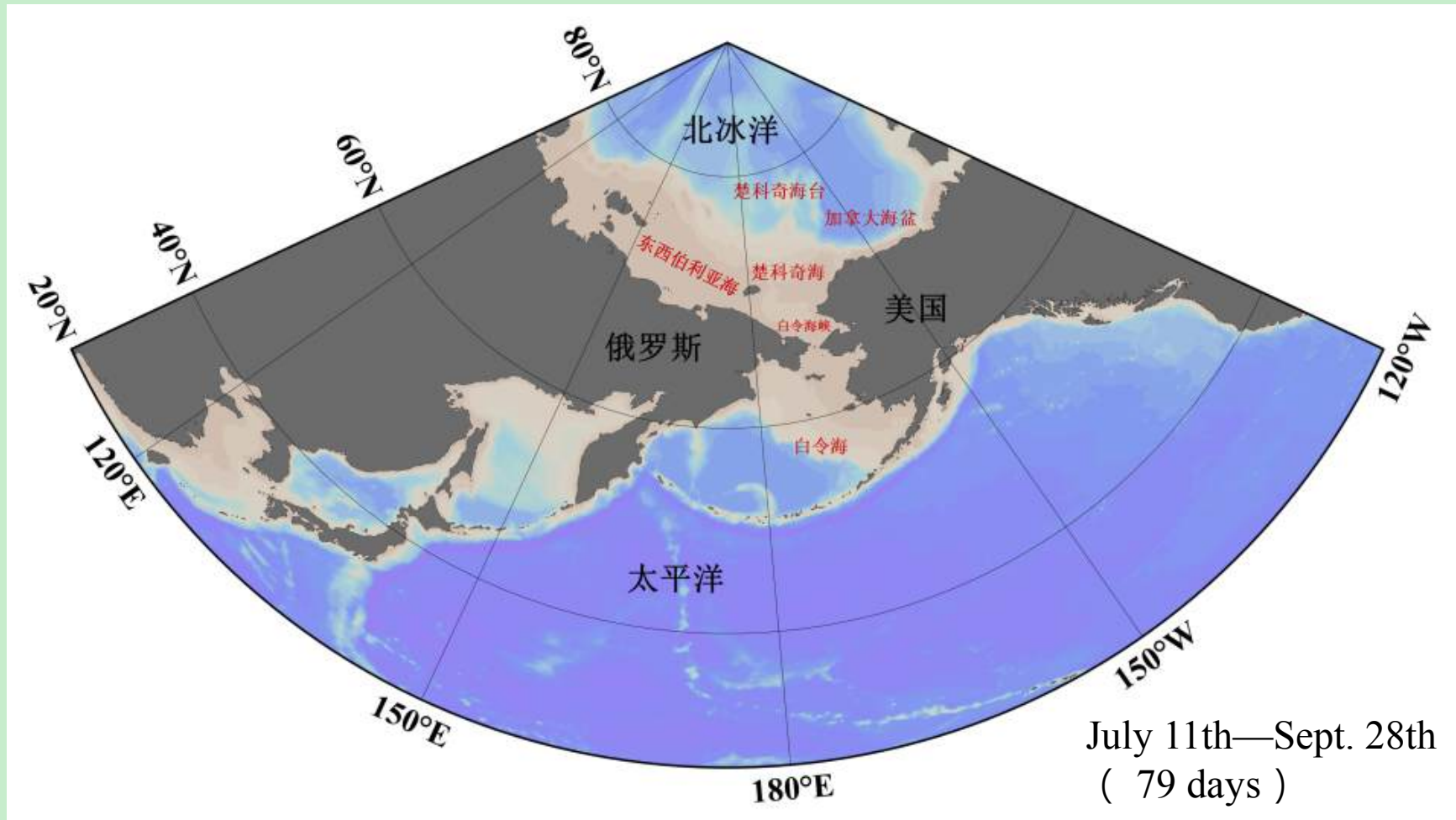
# CHINARE-7 in summer 2016

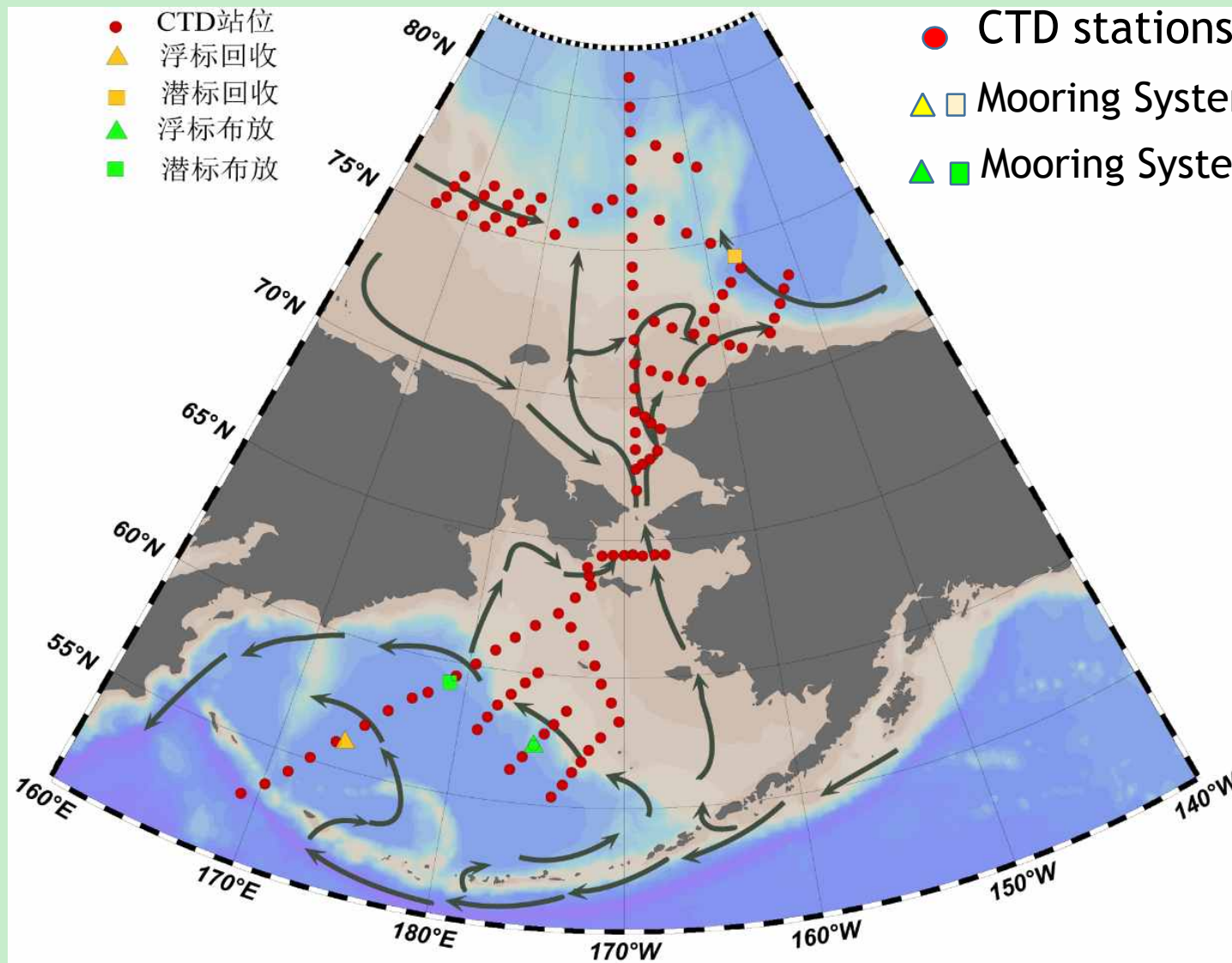
Jianfeng HE

Polar Research Institute of China

13 March, 2016





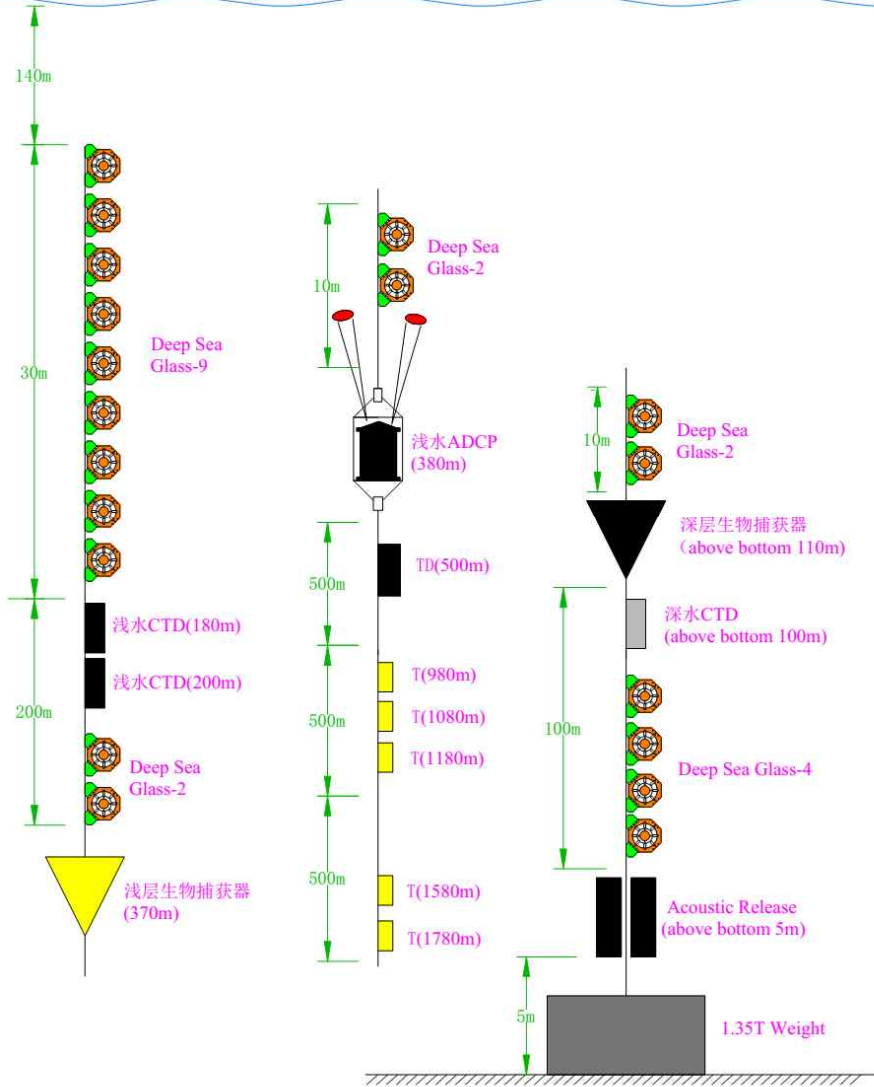


- CTD站位
- ▲ 浮标回收
- 潜标回收
- ▲ 浮标布放
- 潜标布放

- CTD stations 93
- ▲ □ Mooring System to be recovered
- ▲ ■ Mooring System to be deployed

极地潜标观测系统示意图  
国家海洋局第一海洋研究所

2000m



## Chinese 5-year Arctic cruise plan (2016-2020)

2016 summer Xuelong cruise

2017 summer Cooperation cruise?

2018 summer Xuelong cruise

2019 summer New icebreaker test cruise

2020 summer Xuelong cruise (logistic support to MOSAiC?)

3 Xuelong cruises + 1 new icebreaker test cruise + 1~2 cooperation cruises



THA  
NK  
S!

