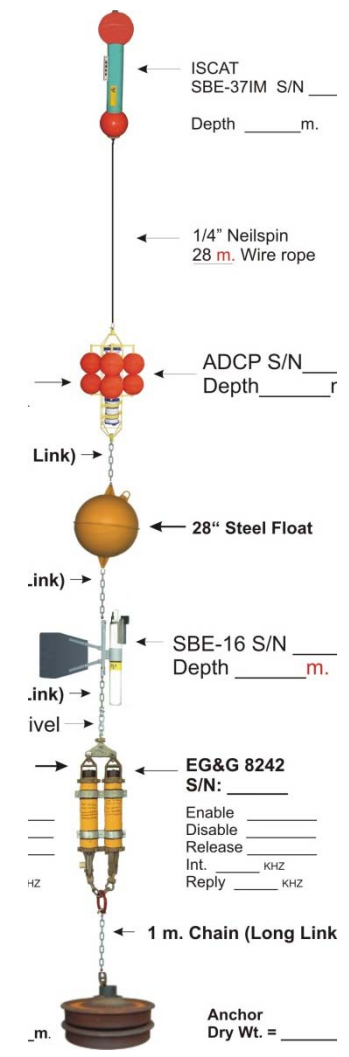
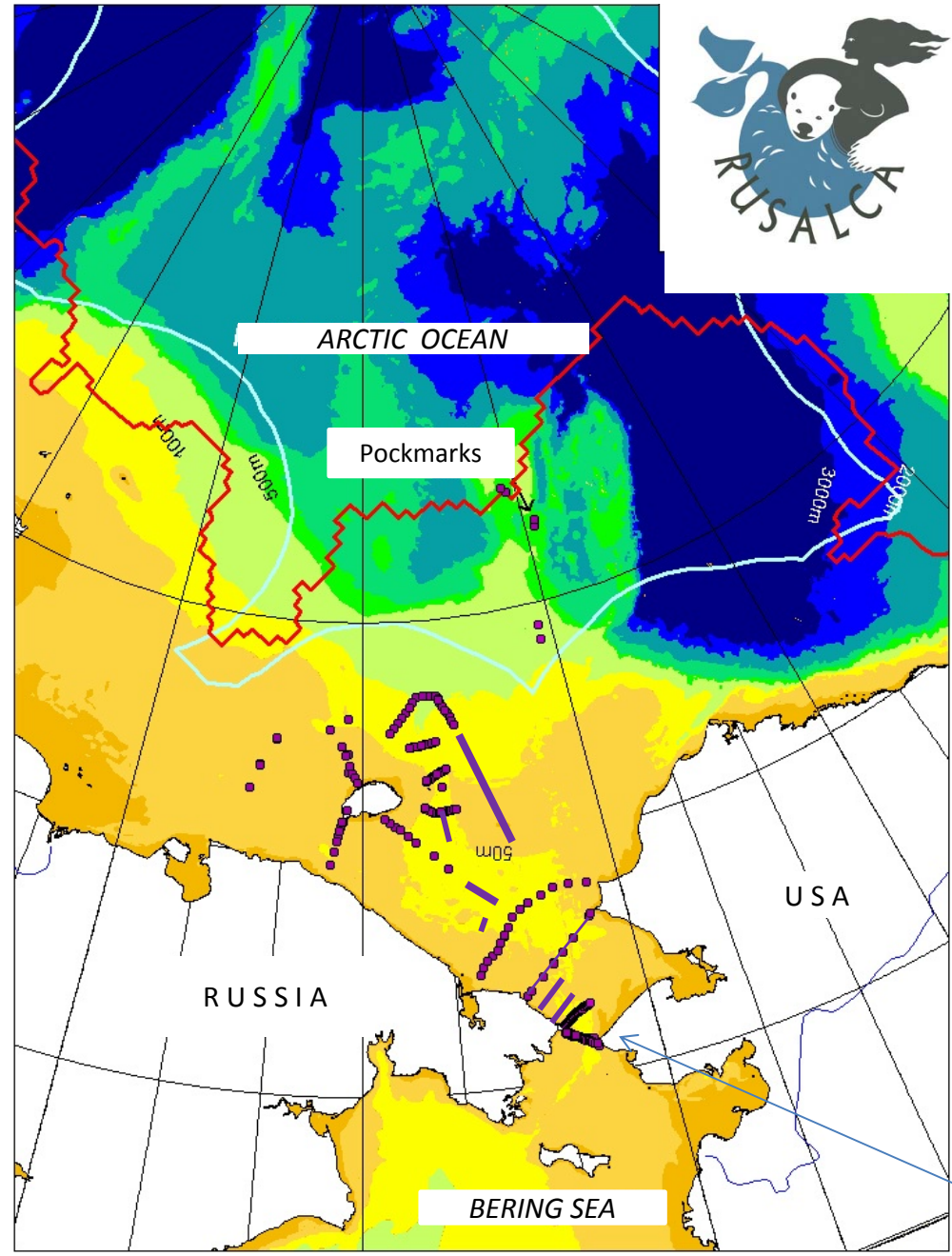


# RUSALCA STATIONS 2004-2014

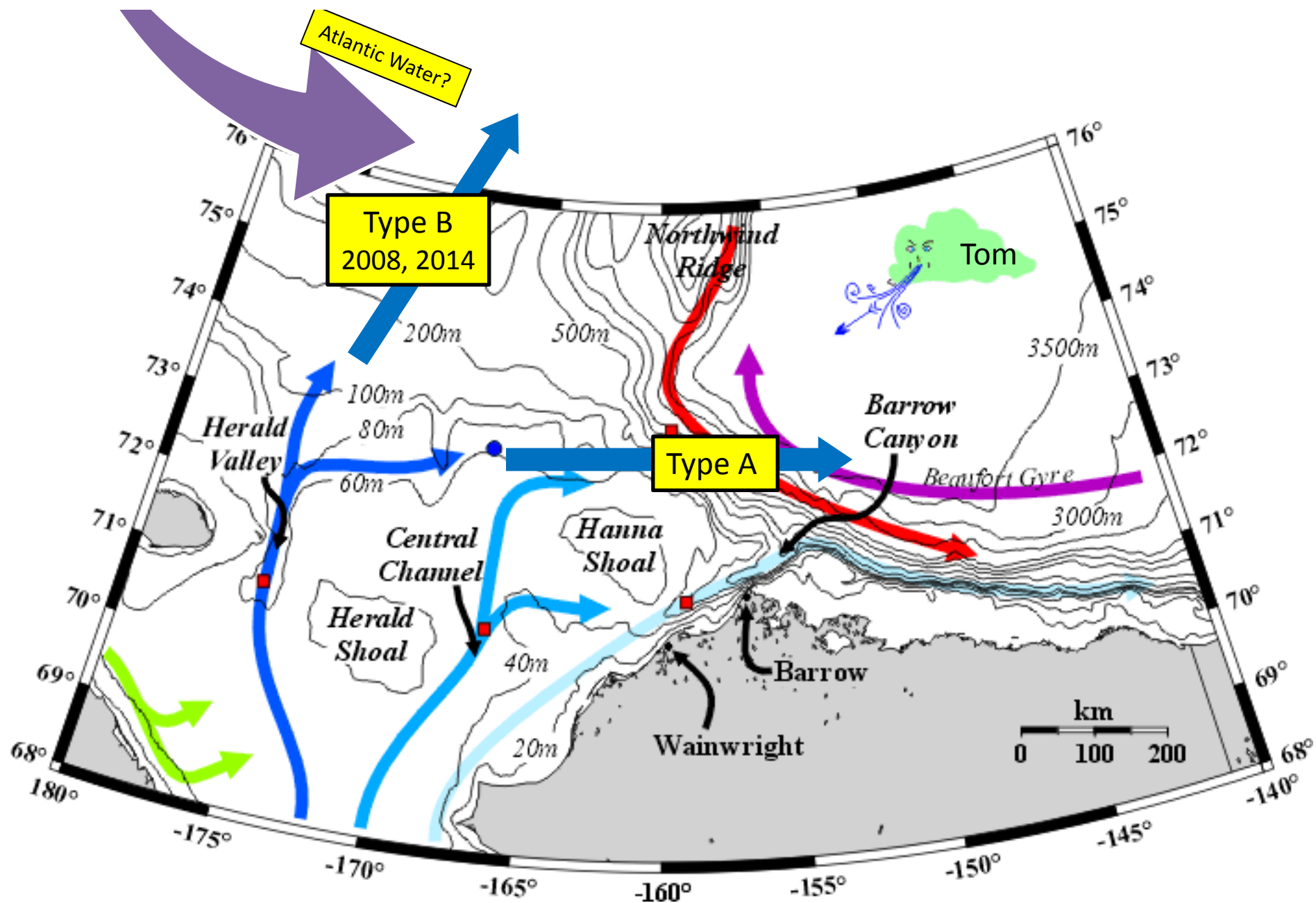


Oceanic fluxes of volume and heat through the Bering Strait increased by ~50% between 2001 and 2011

Bering Strait

# Viktor Buyenitski 2015

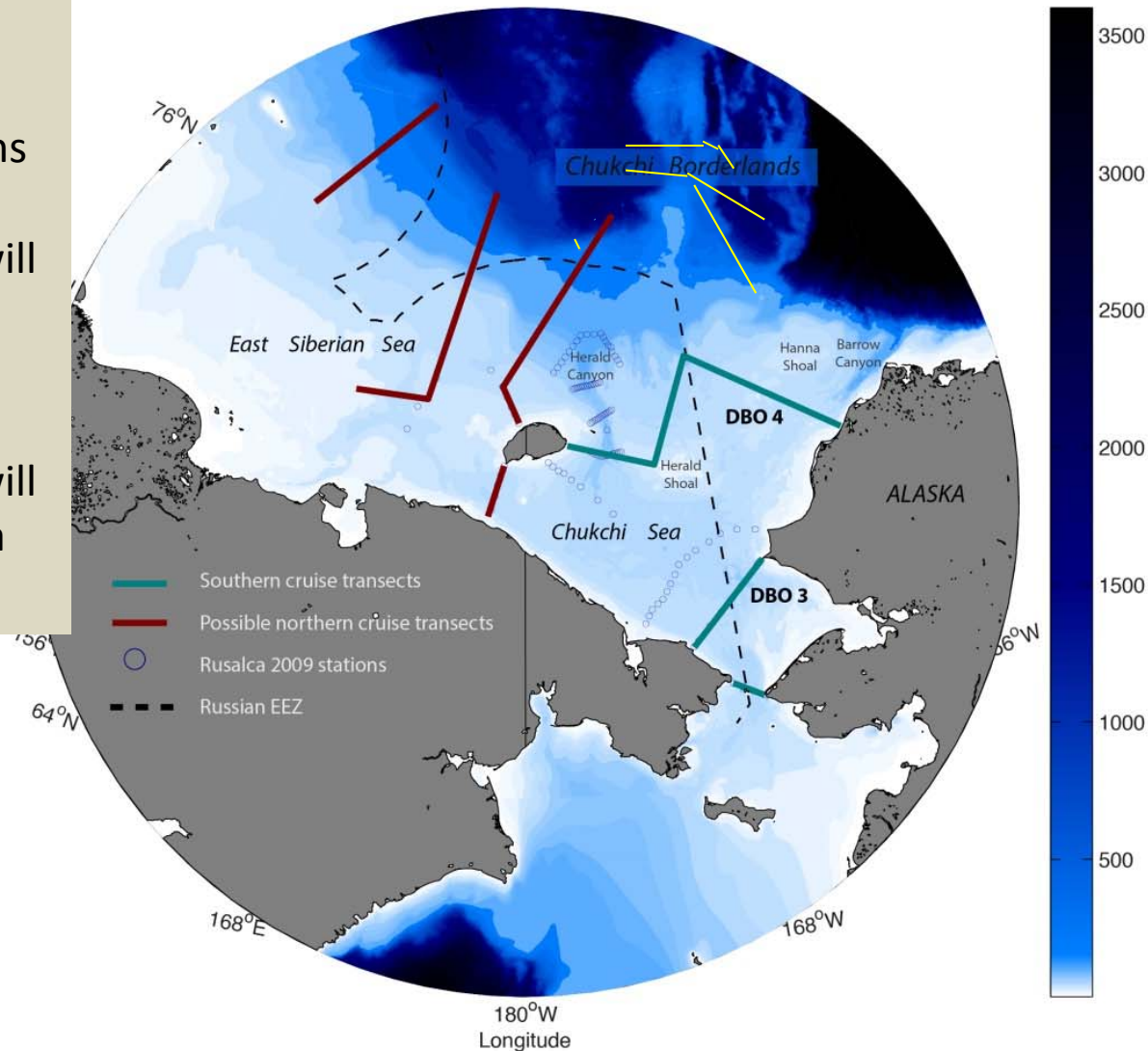




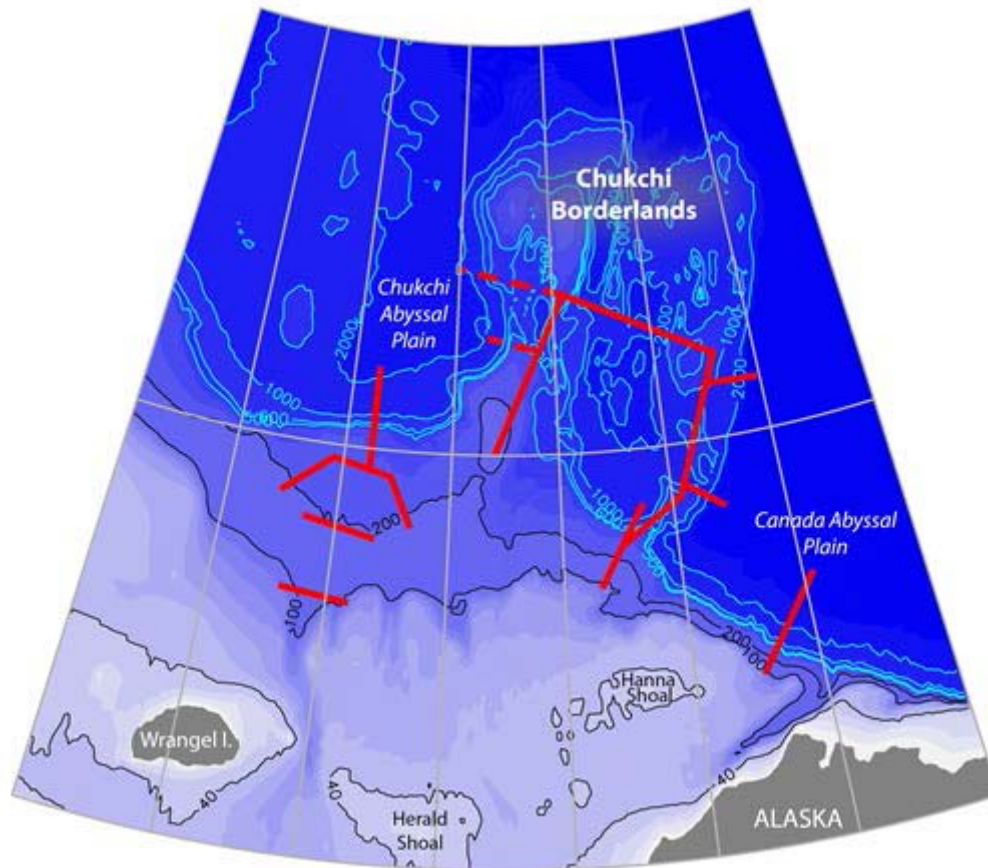
Background: Figure of Tom Weingartner

# RUSALCA Proposed New Lines

- Oceanographic transects and critical Ecosystem observations
- In 2015 RUSALCA will cover DBO3 and the Bering Strait Line
- In 2016 RUSALCA will cover B.S, DBO3 and a New DBO4 line



# Possible NOAA- Ocean Exploration proposed Transects- 2016



2016- NOAA Ocean Exploration  
Will take biophysical Observations  
Over the Chukchi Borderlands

May invite participation from other  
PAG countries.

Cost 3 Million \$

# NABOS New Transects for RUSALCA 2015-2017

