

ASSW 2014 meeting  
Helsinki, April 5~8, 2014

# 2014 Chinese Arctic Cruise

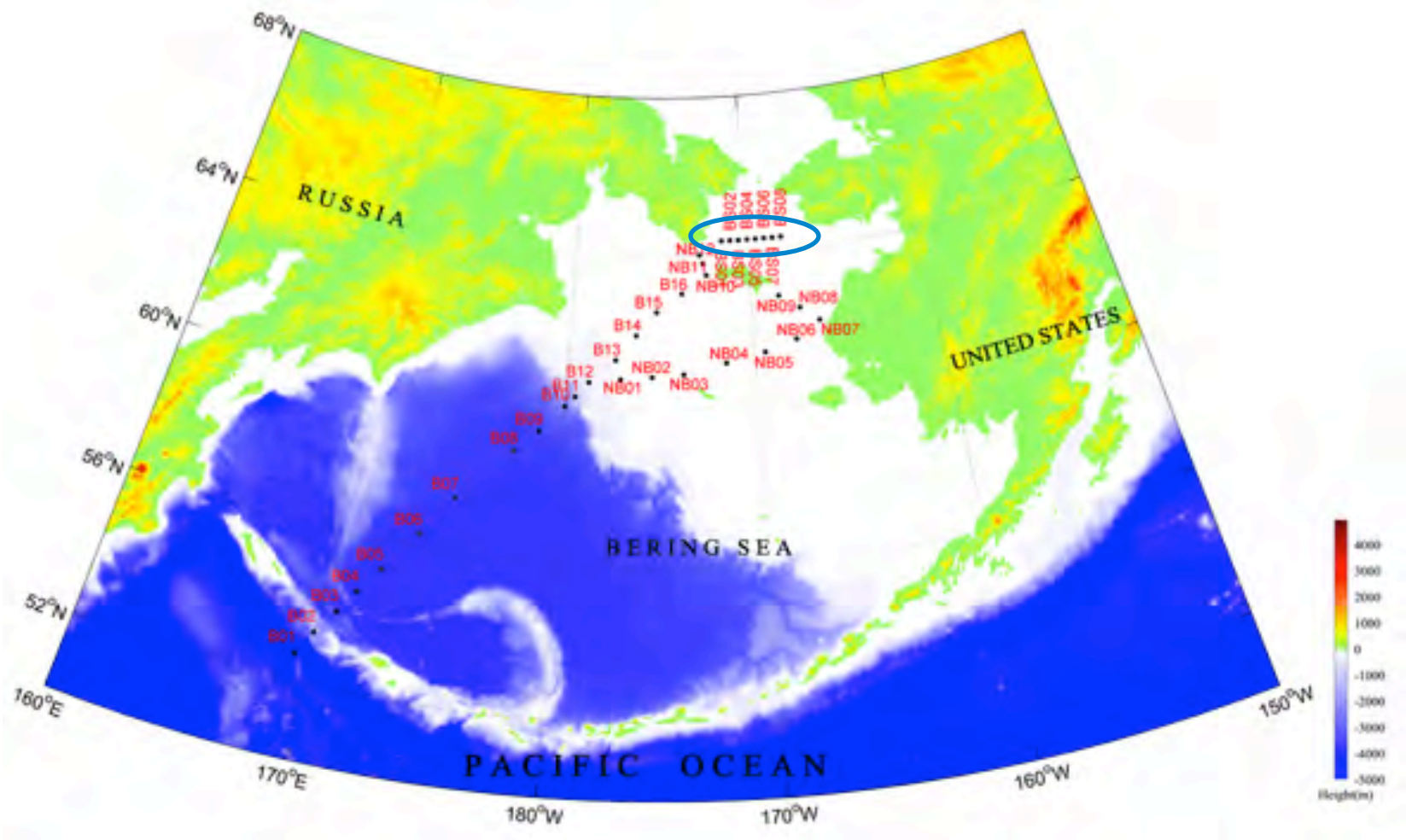
Jianfeng He

Polar Research Institute of China

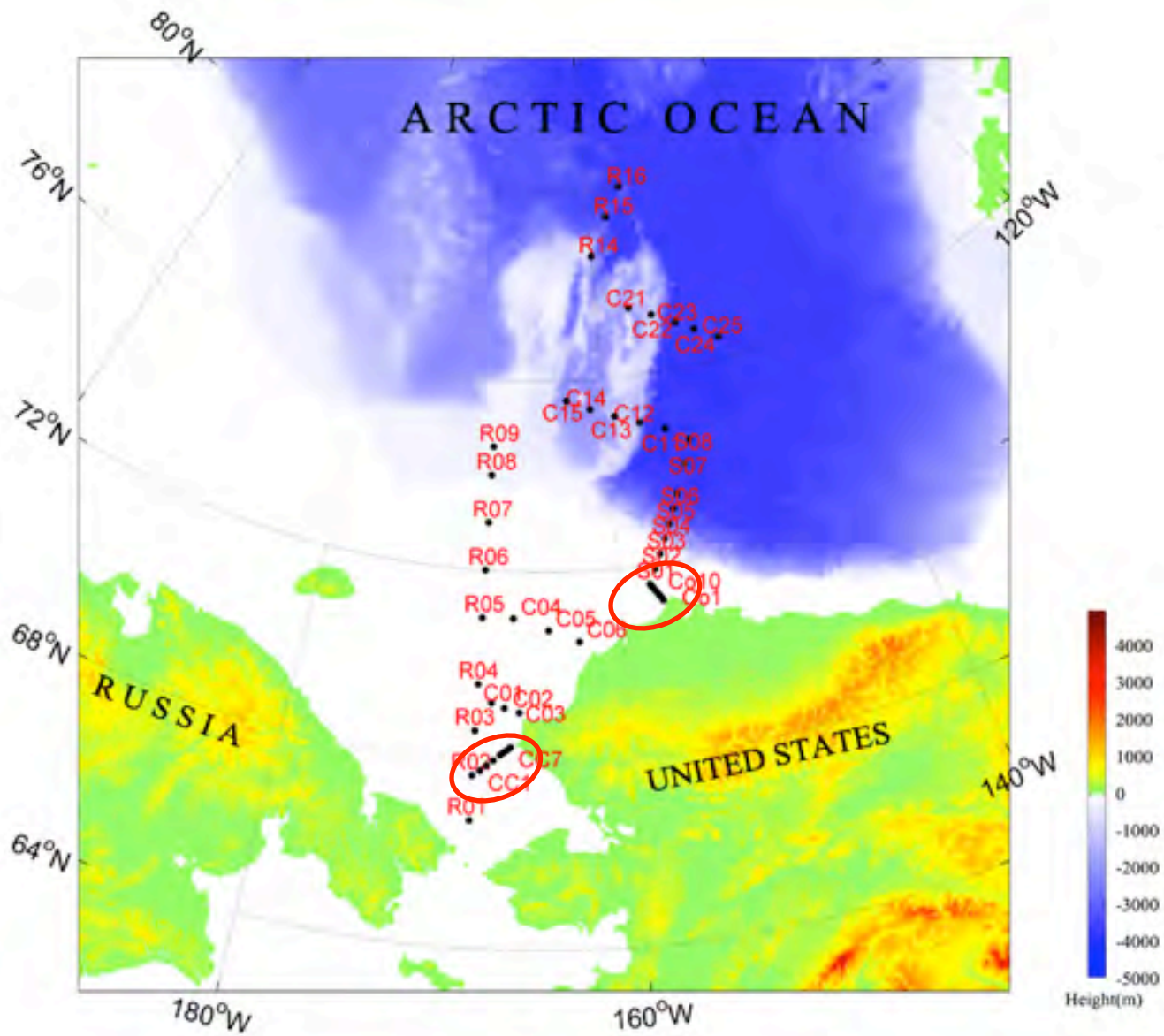
# Main purpose

- Quick change of Arctic environment with its effect on Chinese climate;
- Carbon biogeochemistry and ecosystem in a quick change environment of the Arctic Ocean.

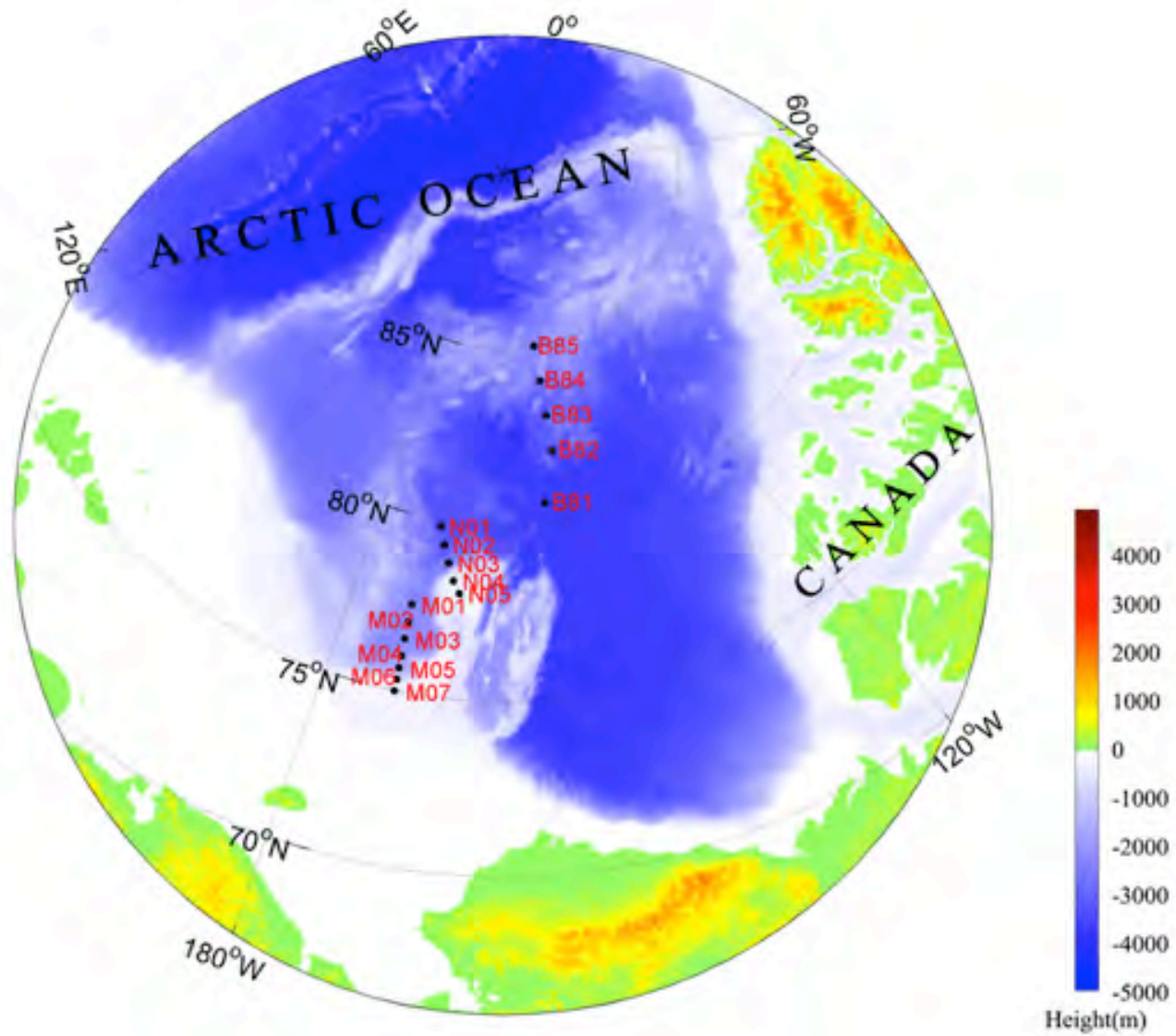
- 75 days (July 11~Sept.24)
- Investigation area: Bering Sea, Chukchi Sea, Canadian Basin, central Arctic Ocean
- Stations: 82+17(flexible)+9(ice stations)



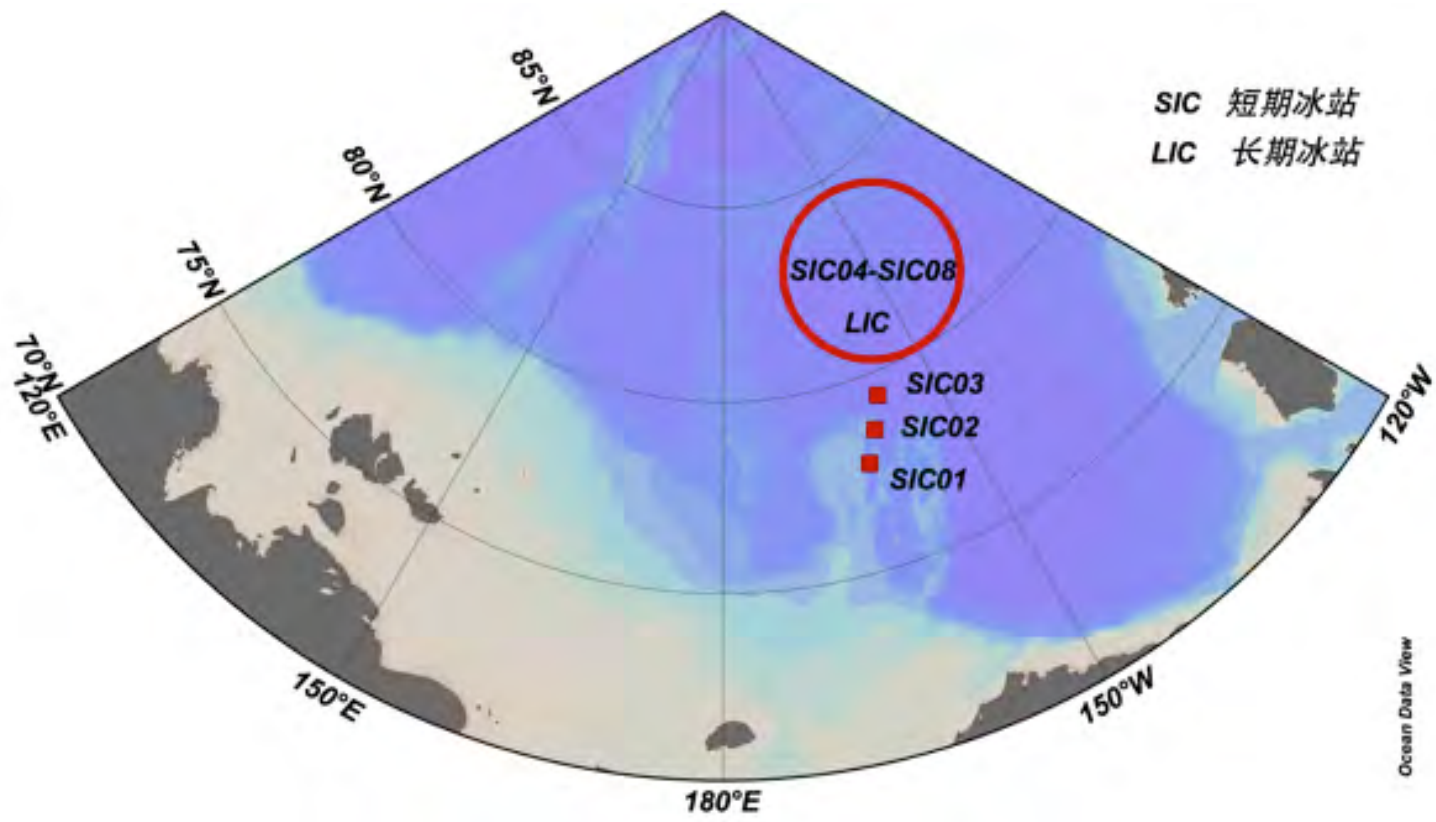
36 investigation stations



46 investigation stations



17 flexible stations



9 ice stations, in which one will last 10 days



- ~8,000 T  $\longrightarrow$  14,000 T
- Basin design is proved by the government end of this year?



**Thanks!**

