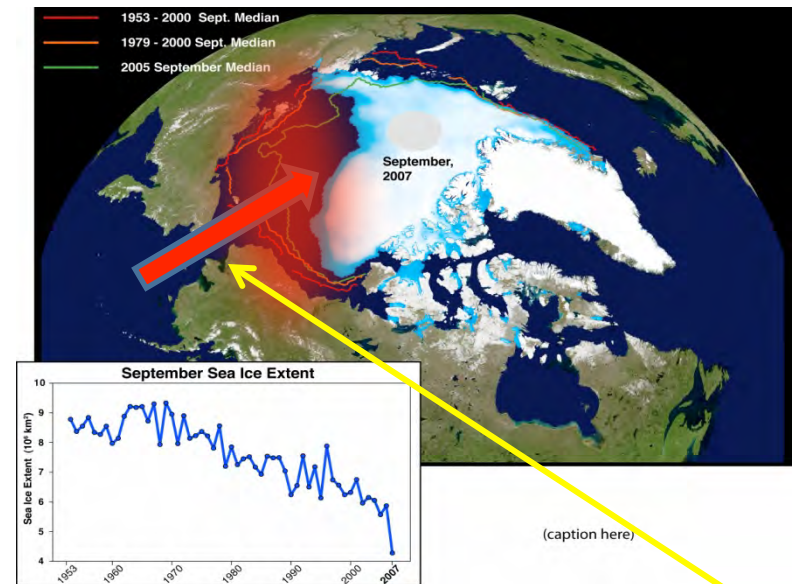


OPPORTUNITY: Rapid Response to Map Baselines in the High Pacific Arctic Before It Is Too Late:

Five-year Strategy RUSALCA and PAG?

- Determine the **sources of heat** causing sea ice melting:
 - Atlantic and Pacific Water Mixing
 - Atmospheric Feedback
- Take **Census of Arctic Ocean Marine Life** in the Pacific Arctic
- **Study linkages:**
 - Arctic sea ice loss
 - thawing seafloor permafrost

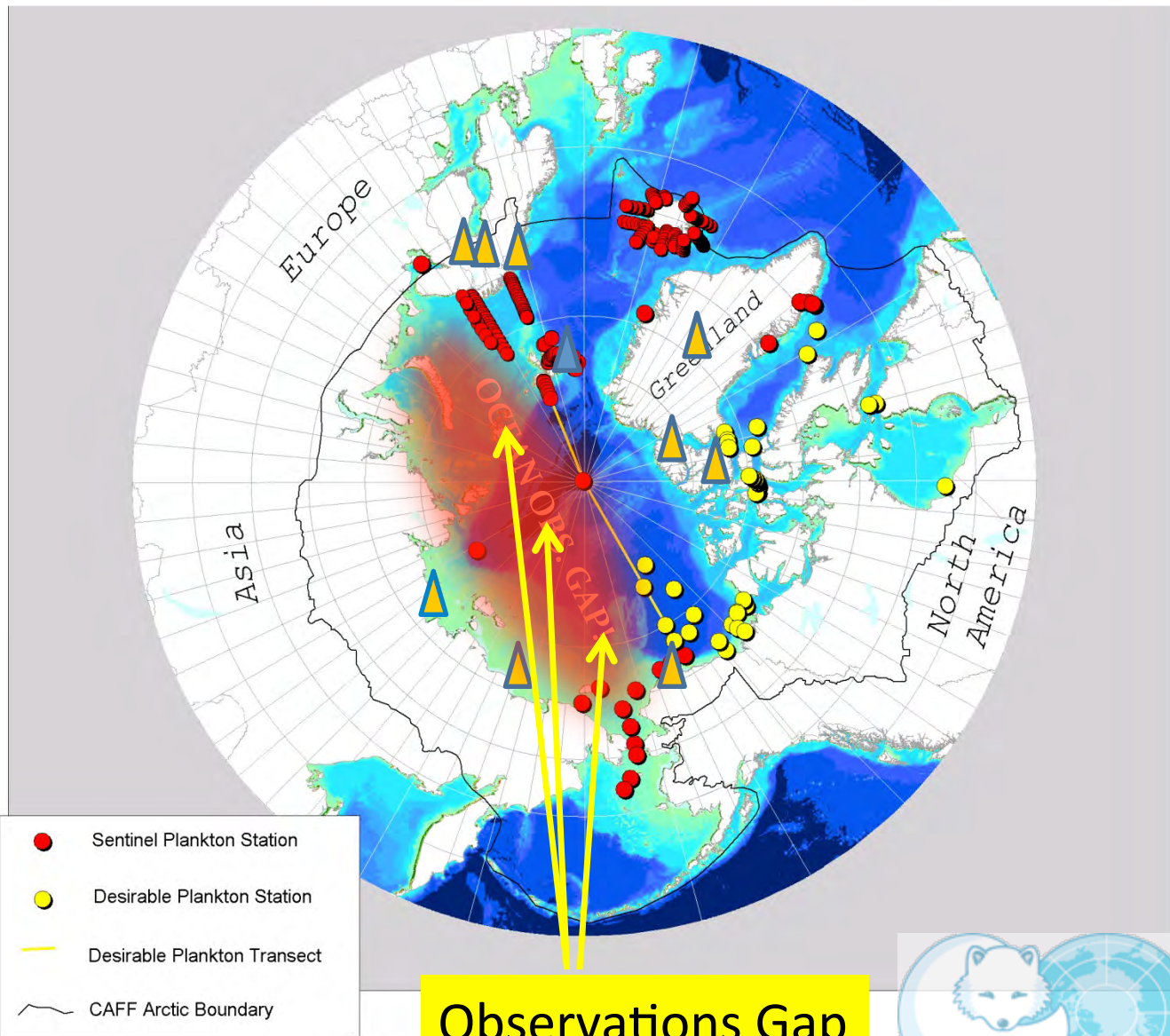


Bering Strait 50% increase in Heat Flux to the Arctic during the last decade.

If no new funding: depend on NOAA, Interagency, International Partners for support

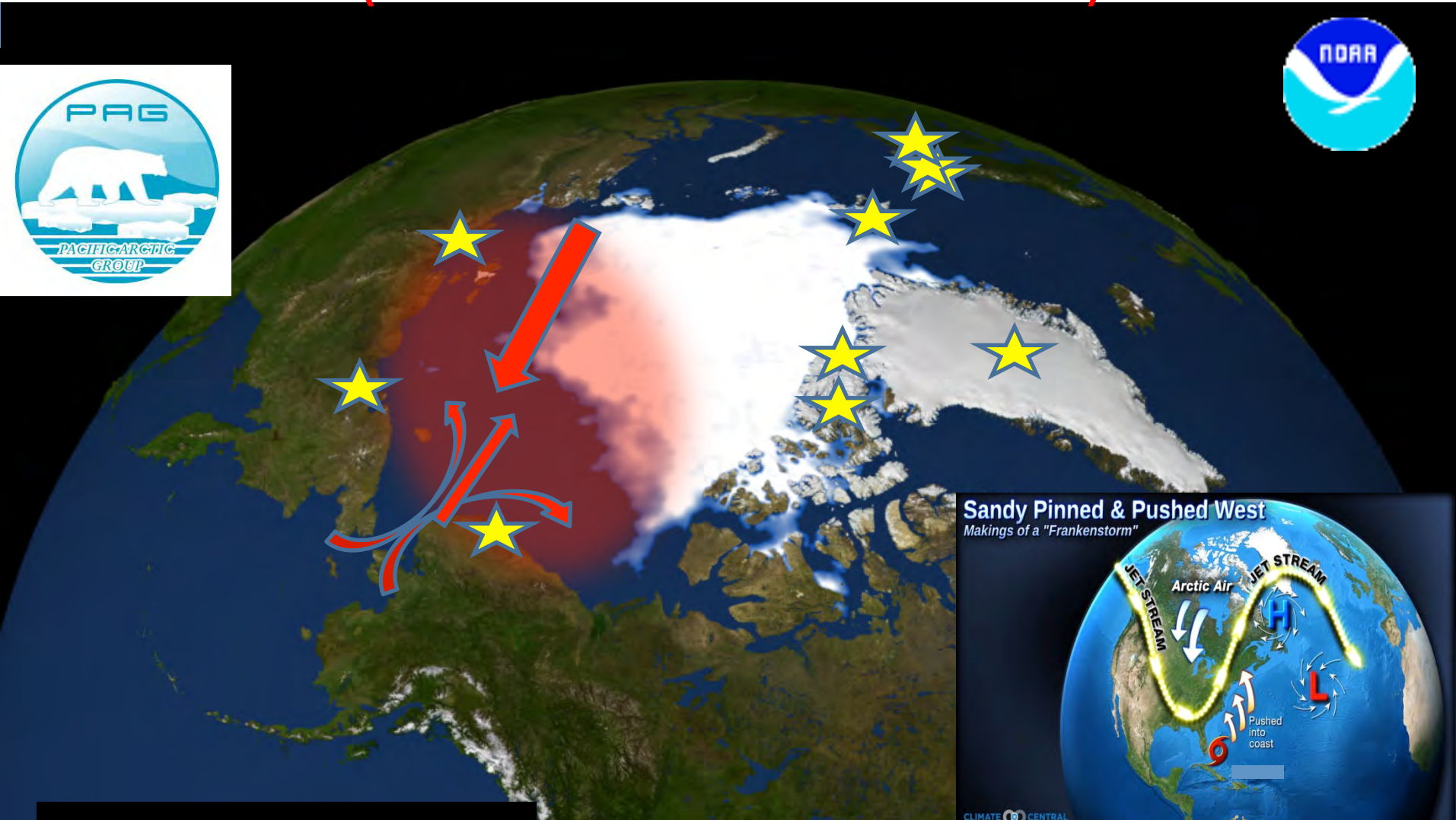
ARCTIC COUNCIL OBSERVING:

WITH ENGAGEMENT FROM THE PACIFIC ARCTIC GROUP AND THE EU




ARCTIC COUNCIL


ARCTIC SYSTEM CHANGE DETECTION AND IMPACTS: A PROPOSED PAG 5YR PLAN (OBS. AND PREDICTIONS)




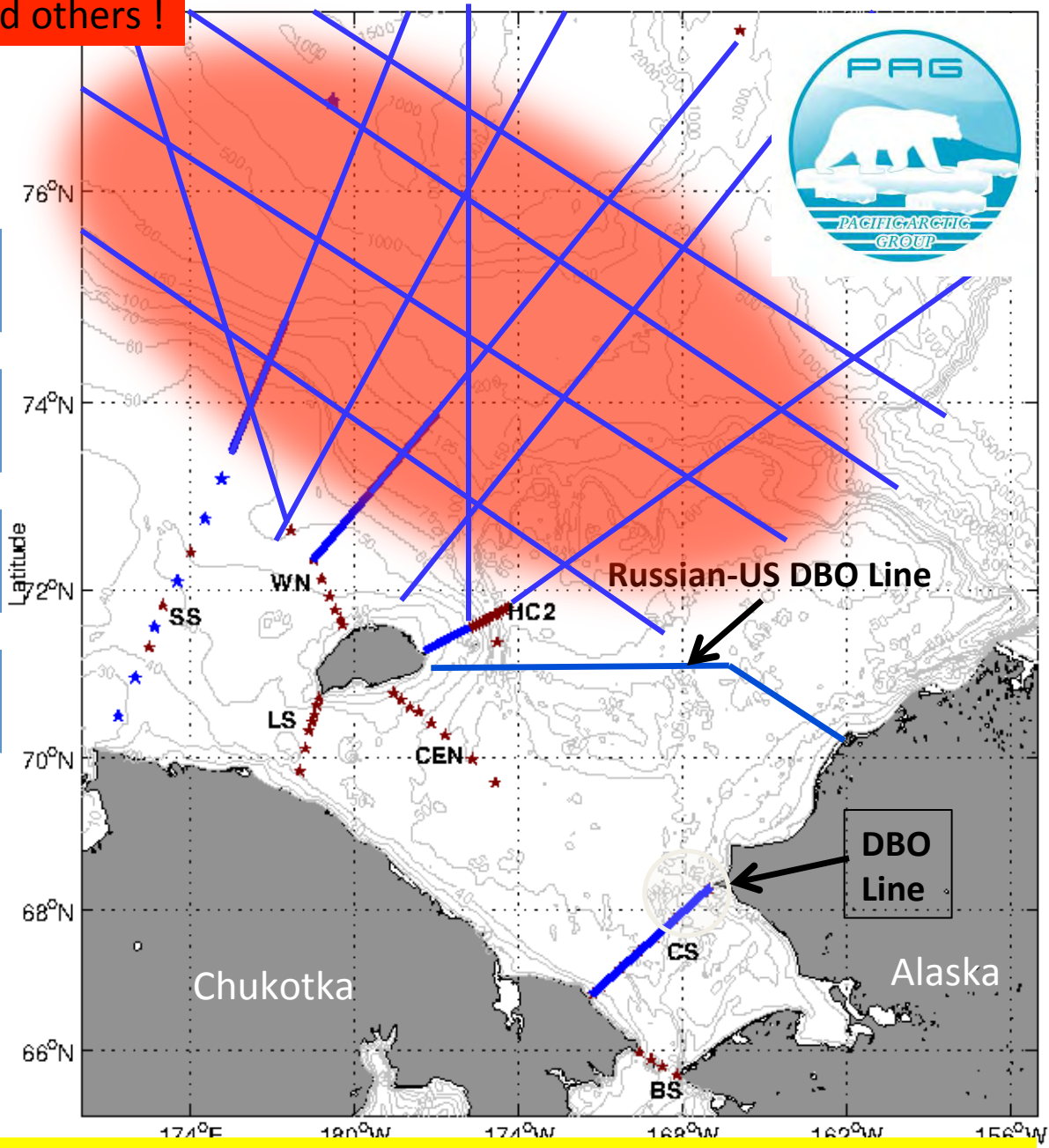
Considerations for 2014-2019 sampling

 2 U.S. Russian DBO lines

 10 Repeat hydrography,

 Ecosystem and Methane

 RUSALCA + Korea, China, Japan, Canada, Germany, Sweden?



Proposed 2015-2010 synoptic surveys: YOUR ADVICE and PARTICIPATION WANTED!!