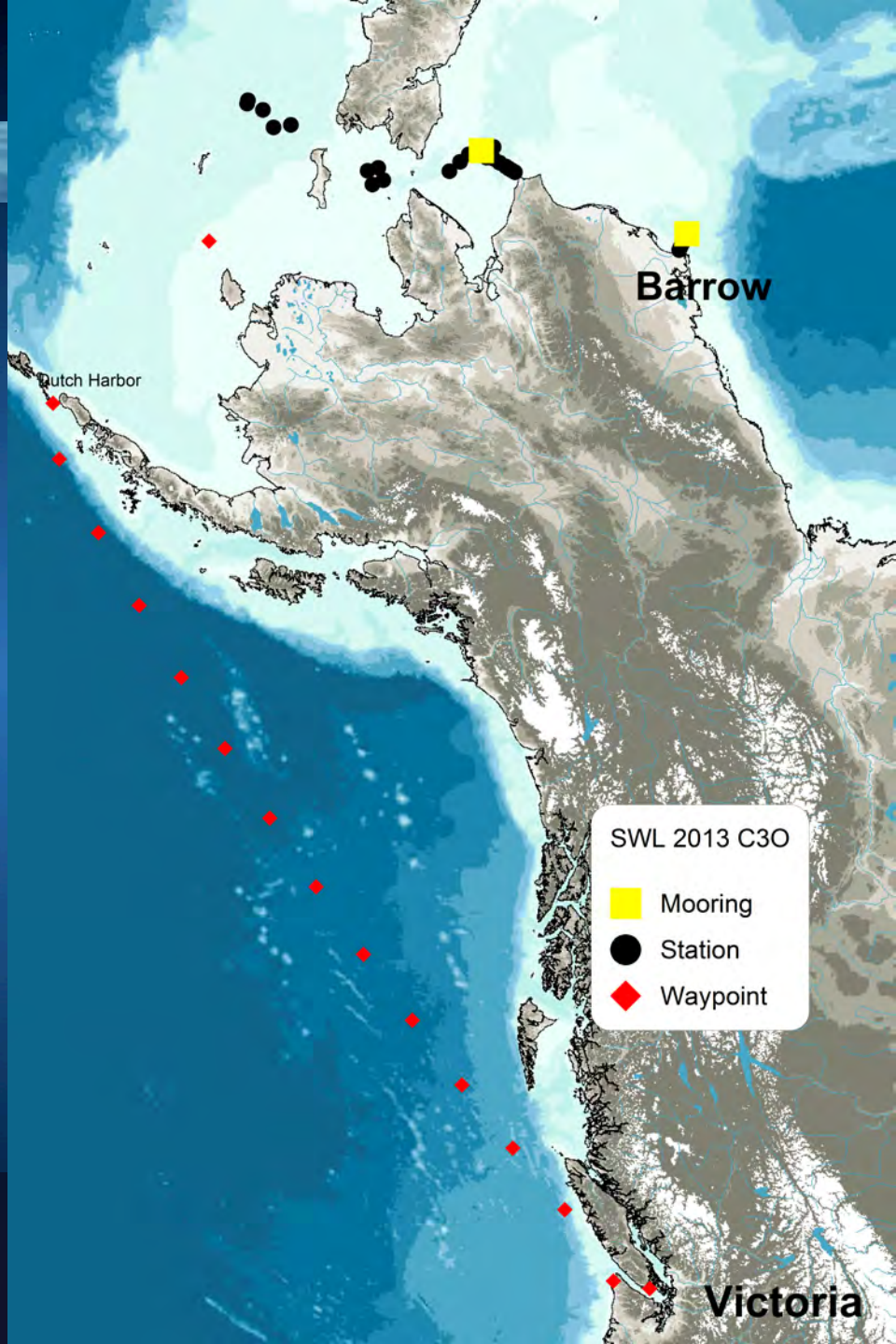
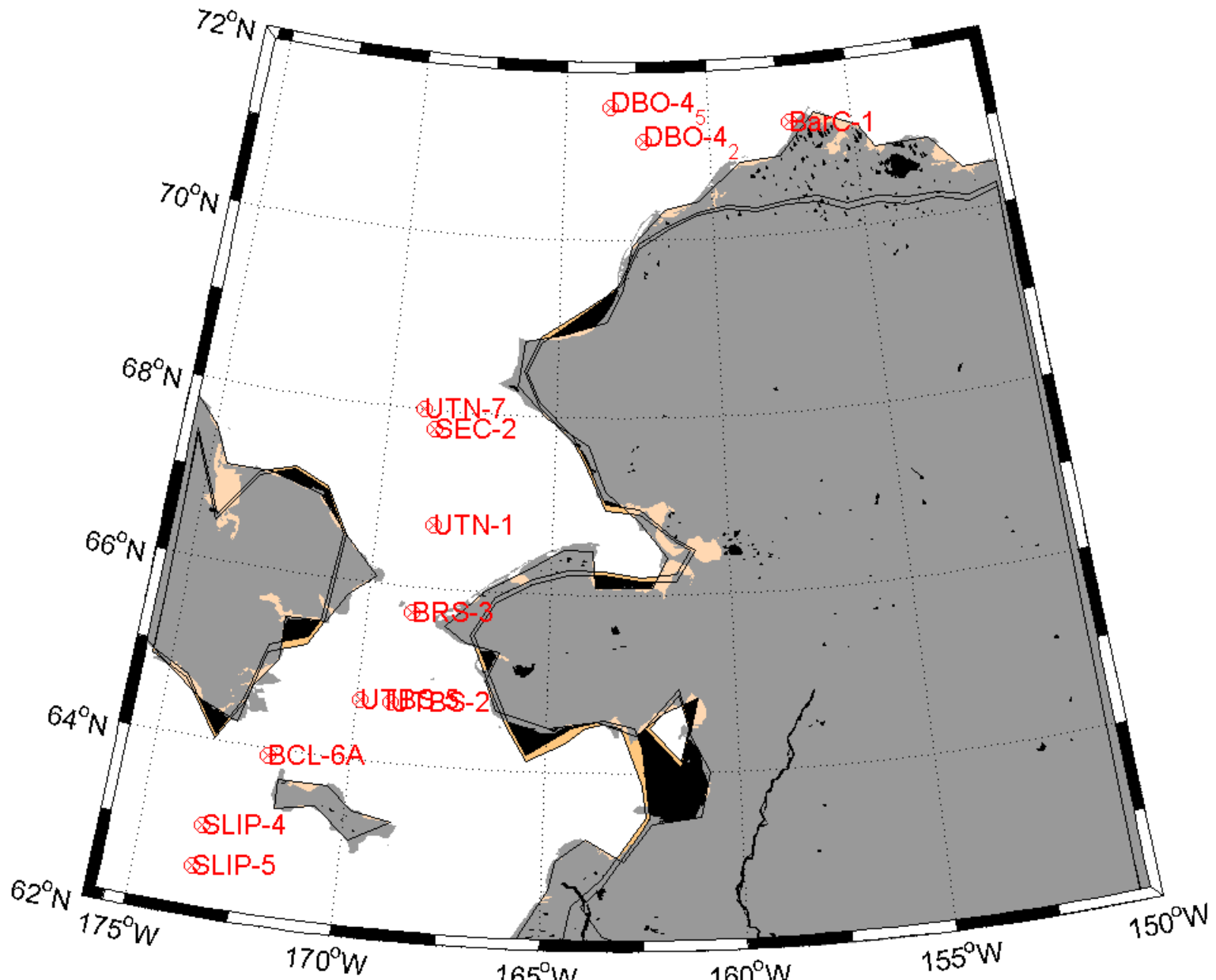




C30 & DBO

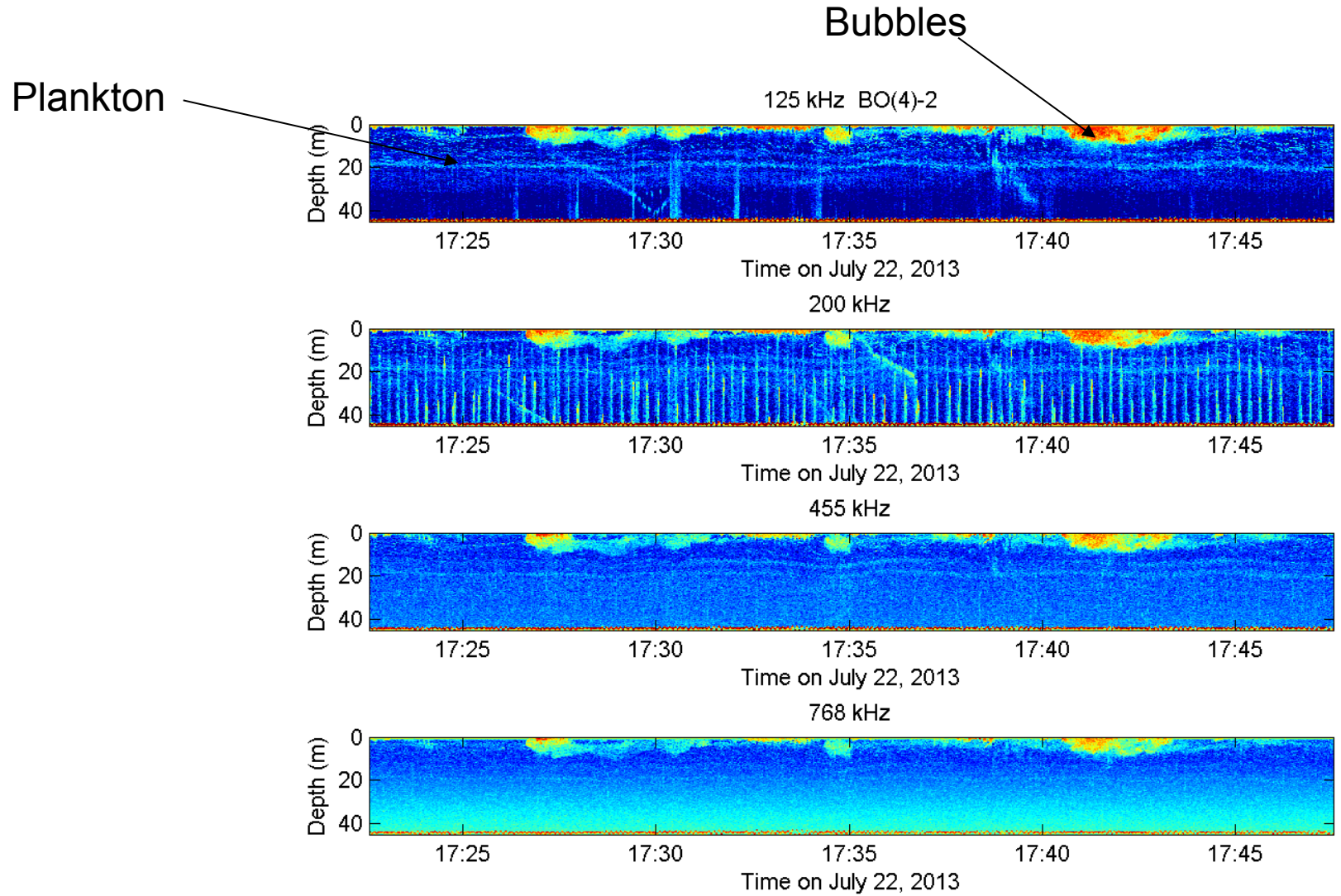
CCGS Sir Wilfrid Laurier: Victoria to Barrow



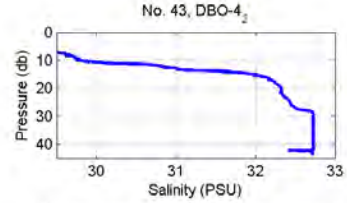
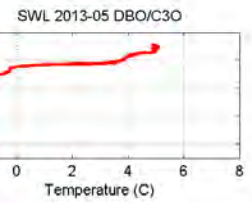
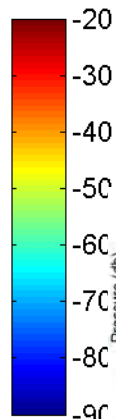
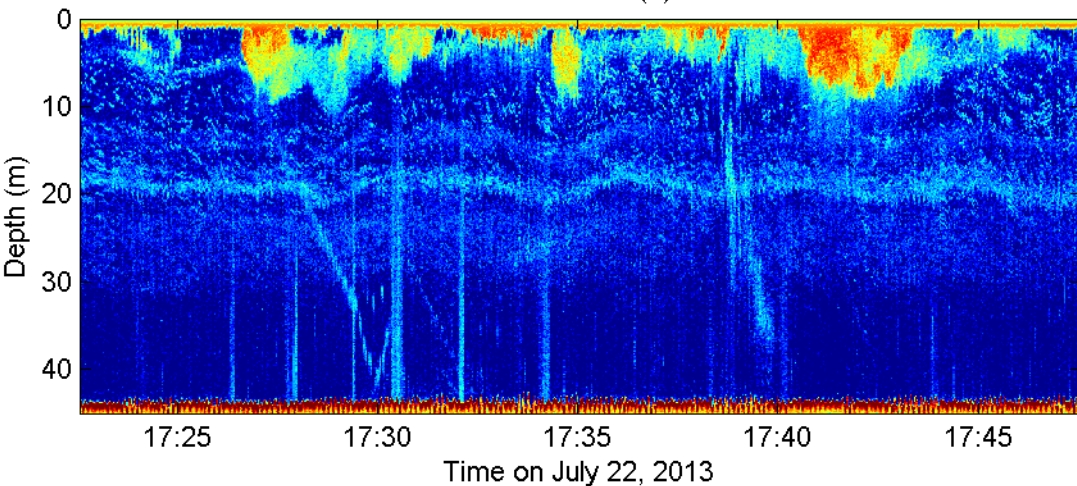


CCGS Sir Wilfrid Laurier July 2013

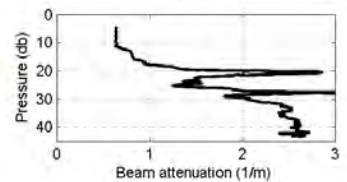
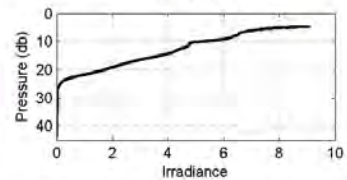
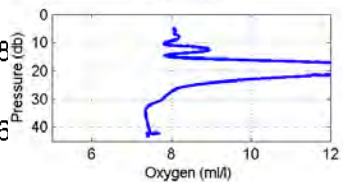
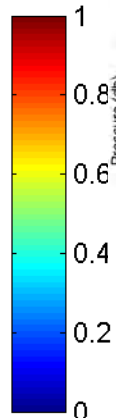
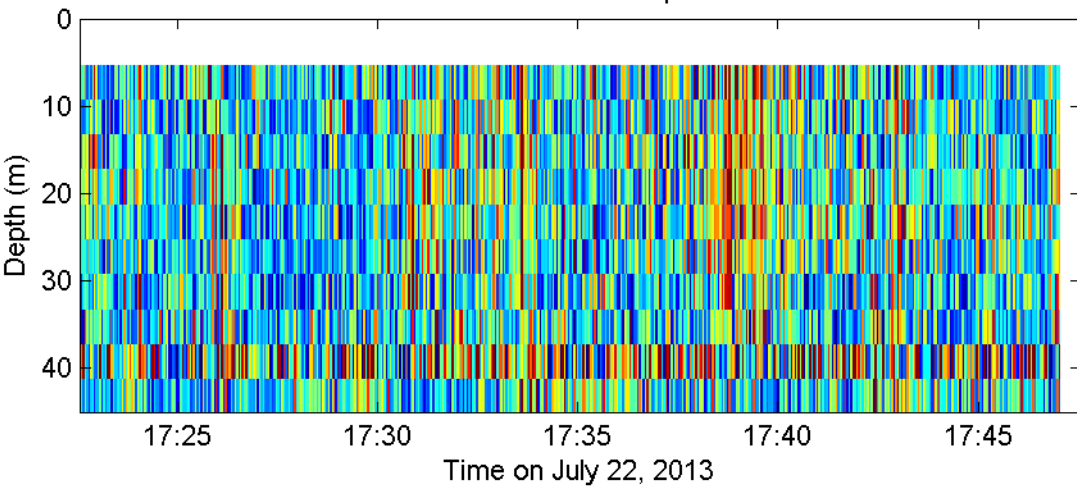
Acoustical backscatter at 4 frequencies.



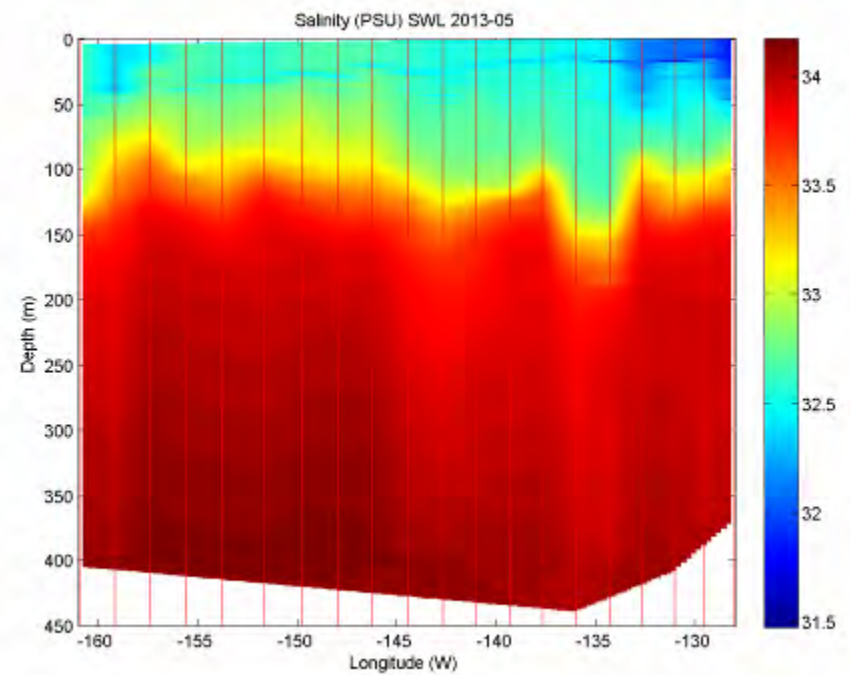
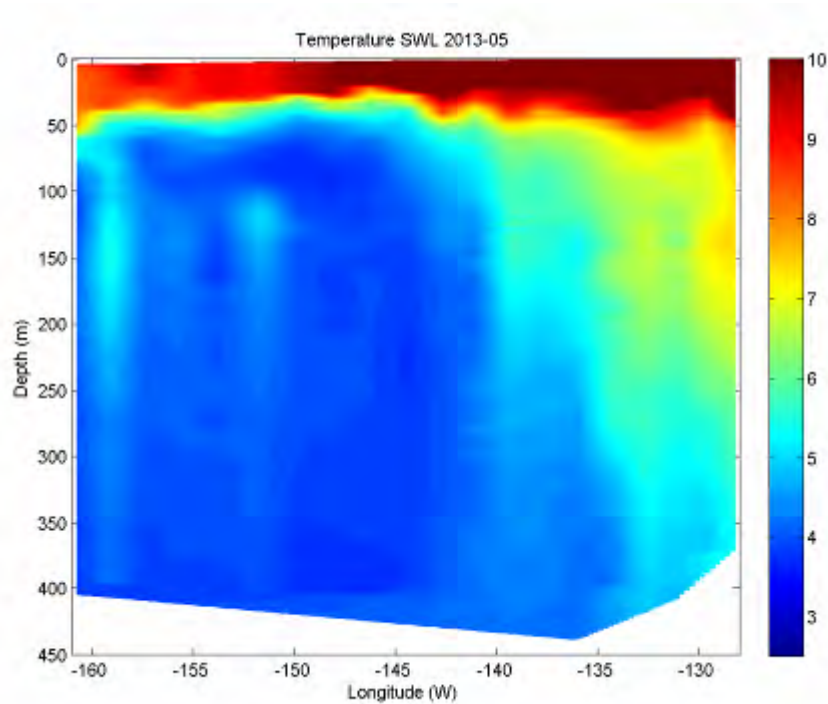
125 kHz DBO(4)-2



150 kHz ADCP. Current speed in m/s



Underway CTD profiles every 6 hours across the Pacific



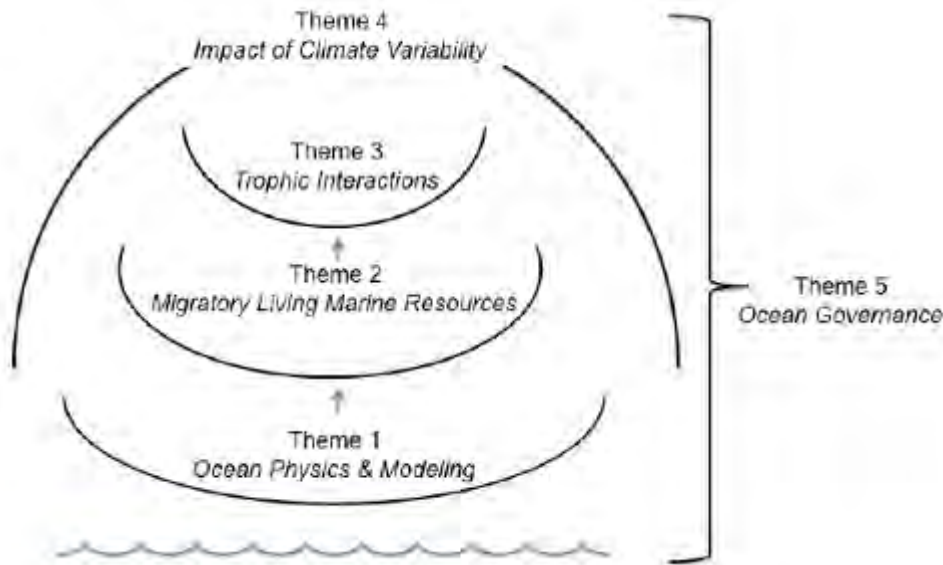


The Arctic Ocean Tracking Network:
Movement and behaviour of an important
commercial fish species, Greenland halibut
and by-catch species, Greenland shark and
Arctic skate in Cumberland Sound.

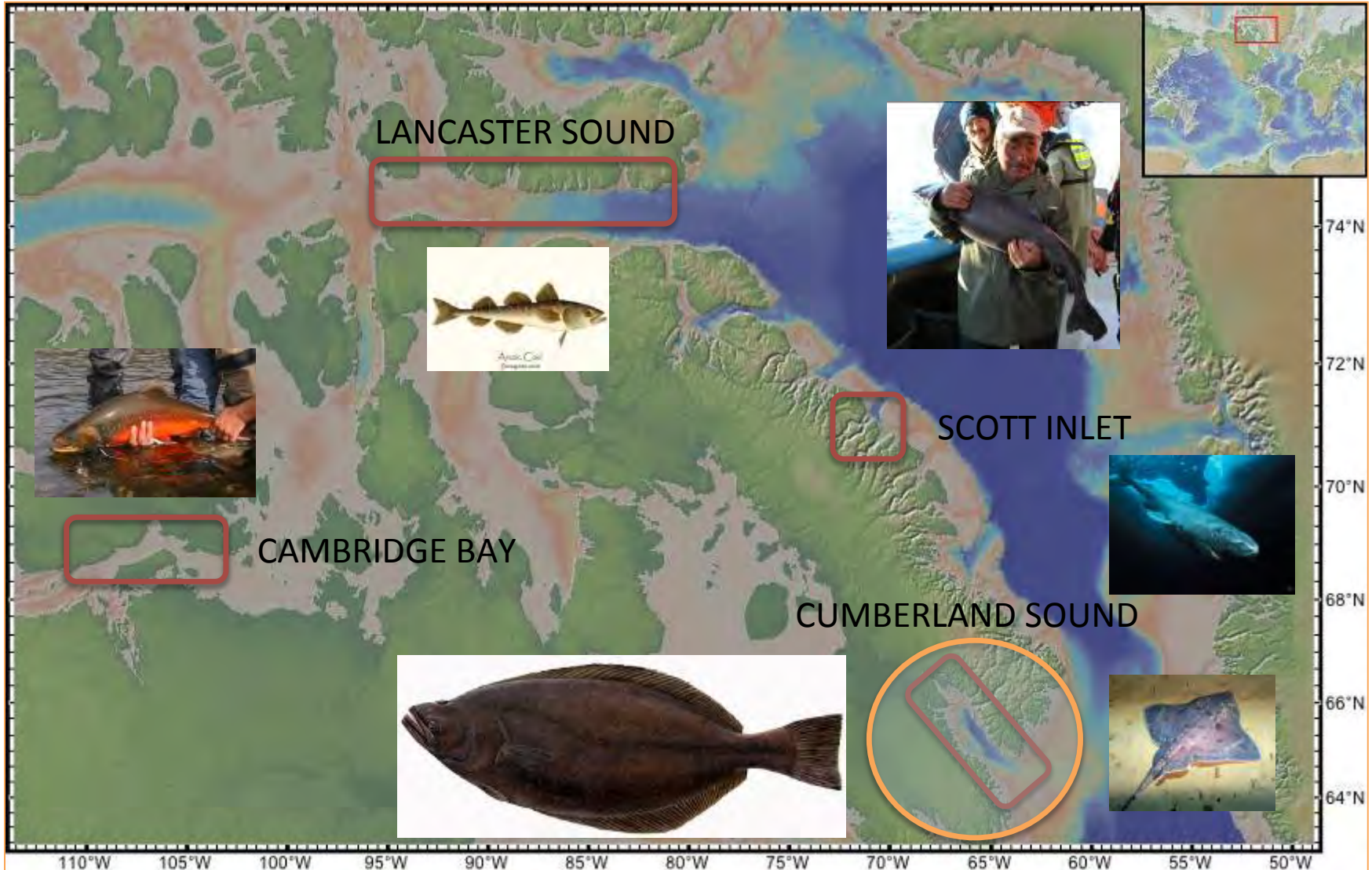
Nigel E. Hussey, Iva Peklova, Kevin J. Hedges,
Svein Vagle, Jeannette Bedard, Margaret Treble
and Aaron T. Fisk



A long term integrative research program which makes use of the latest acoustic and satellite tracking technologies to understand multi-species movements in both a developing and changing ecosystem.



Ocean Tracking Network

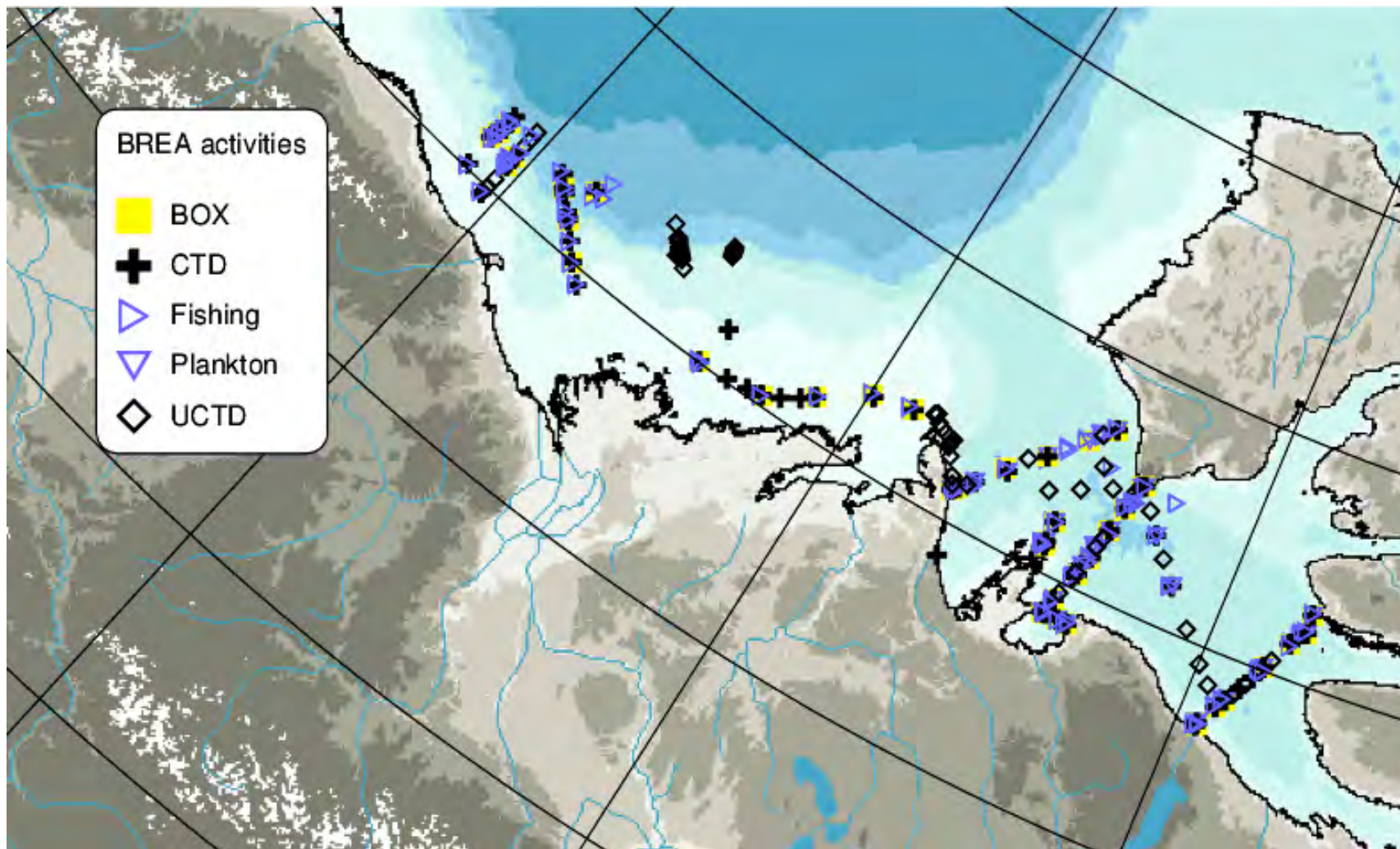


Beaufort Regional Environmental Assessment – 2013 Marine Fishing component

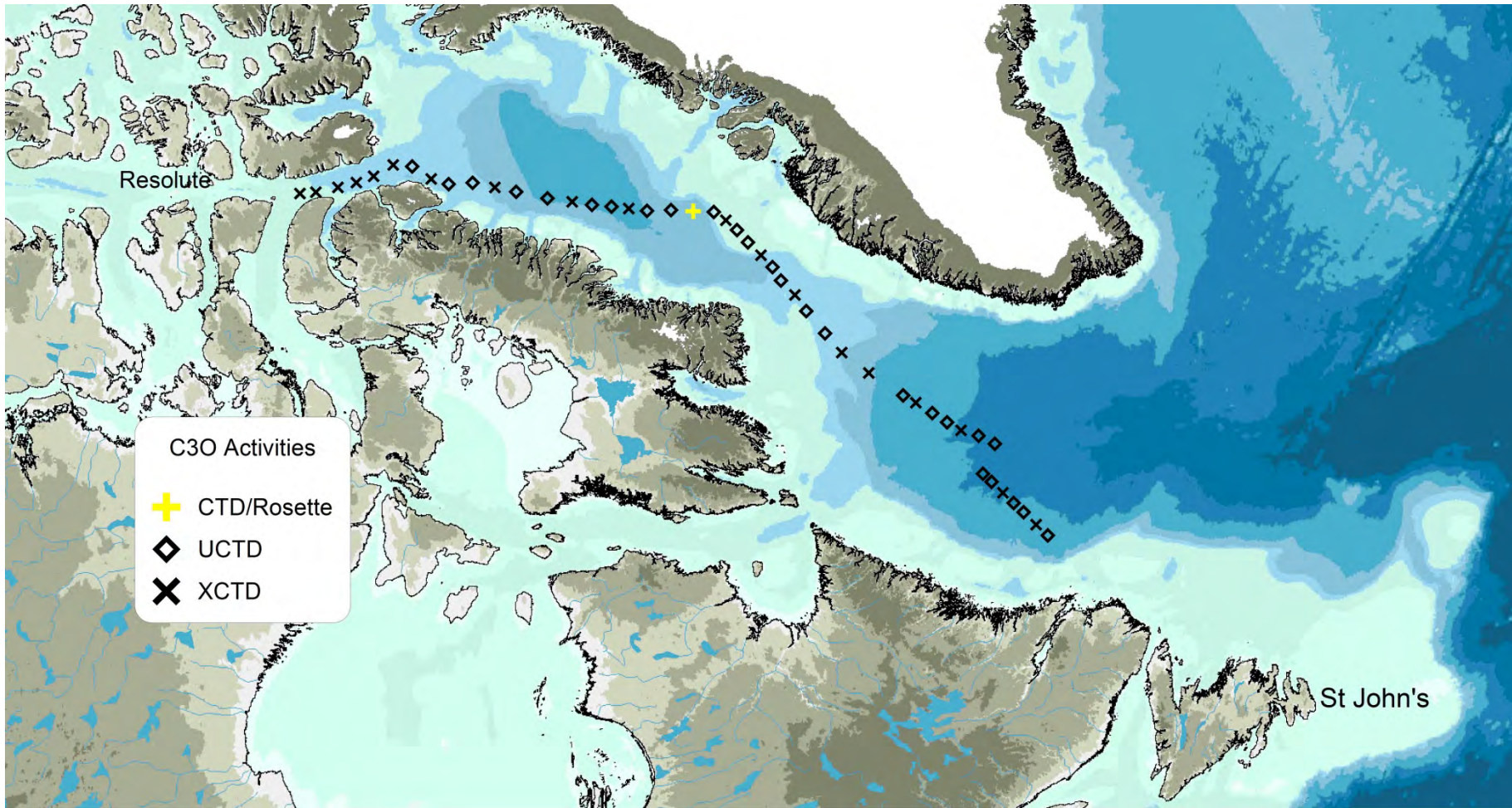
- Year 2 of a 2-3 year field programme
- DFO in partnership with UAF for Yukon-Alaska border sections
- Samples collected using box corer, benthic trawl, mid-water trawl, beam trawl, bongos (oblique tow), multi-plankton sampler (vertical tow), CTD/rosette, underway CTD
- Ship platform is the F/V Frosti, a commercial trawler under contract



Beaufort Regional Environmental Assessment – 2013 Marine Fishing component

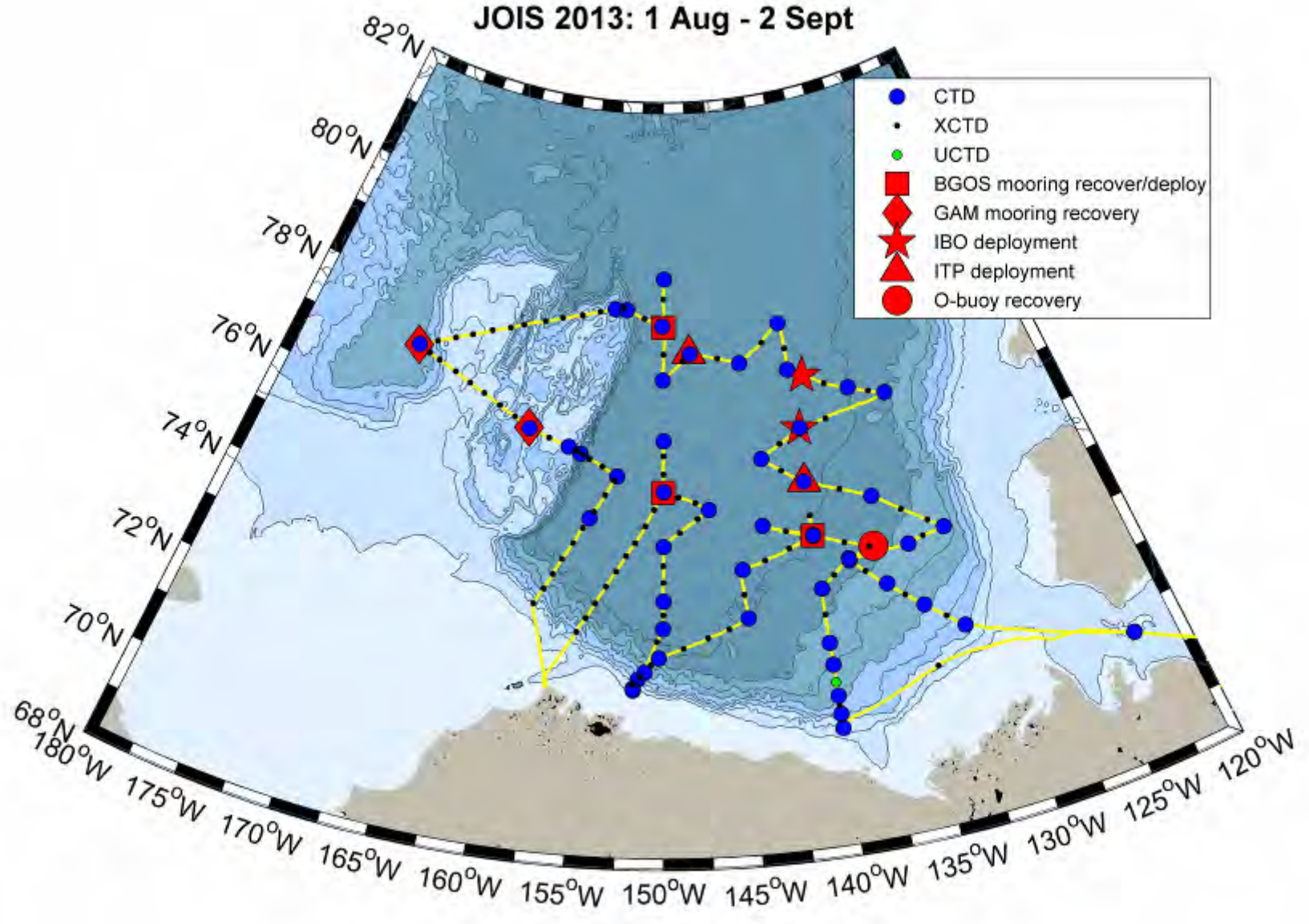


Canada's 3 Oceans – eastern section



Underway measurements only (except for one test rosette)

JOIS 2013: 1 Aug - 2 Sept



55 CTD/Rosette casts for geochemistry and hydrography
16 foredeck rosette casts for gas exchange tracers
20 foredeck rosette casts for microbial DNA
90 net tows for zooplankton
44 weather balloons launched
121 XCTDs
1 UCTD
3 AON-BGOS mooring recoveries and deployments
2 GAM mooring recoveries
2 ITP deployments
2 Ice-Based Observatories (ITP, O-buoy, AOFB, IMBB, ITM, UpTempo)
1 O-buoy recovery
Underway sampling (seawater loop, EM ice thickness, bow mounted irradiance)

Distance travelled: 4738 nm

Fuel burned:

Shiptime lost:

2 days for crew familiarisation at the beginning of the cruise

1.5 days for bereavement evacuation

4.6 hours for engine room repairs

Thank-you!

