

PAG Meeting· Shuzhou China
Nov.5-6 2012

The 2012 Chinese Arctic Expedition

Jianfeng He

Polar Research Institute of China



87°39'39"N

87 days

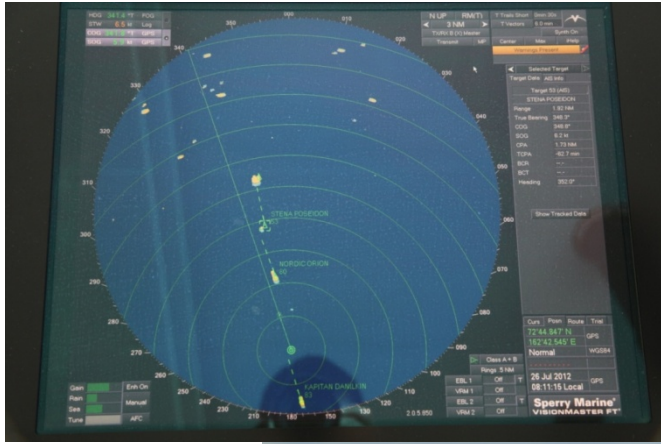
18500 knots

5370 knots in
pack ice zone



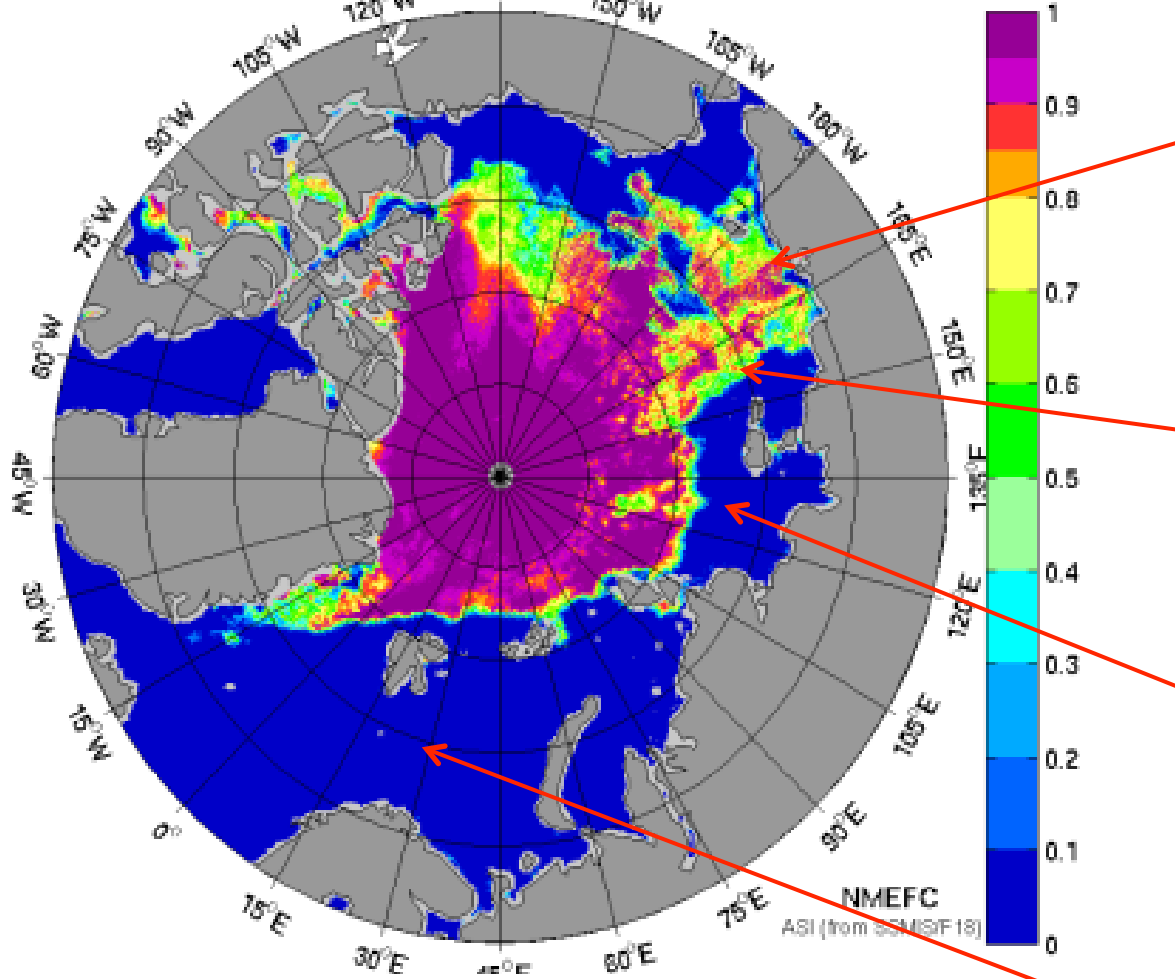
1. Sailing through Arctic passages



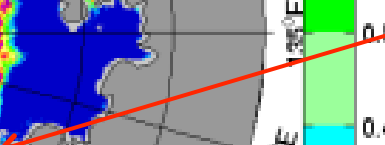
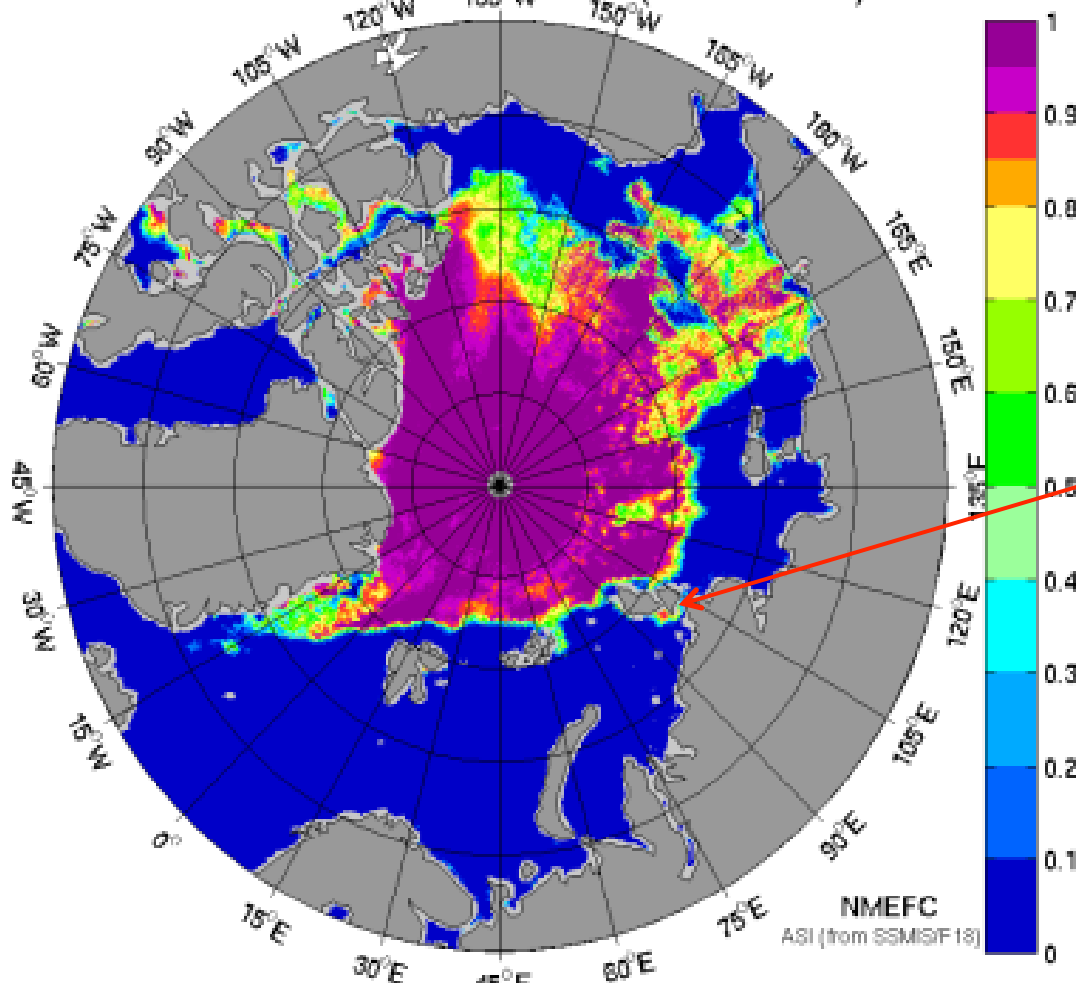




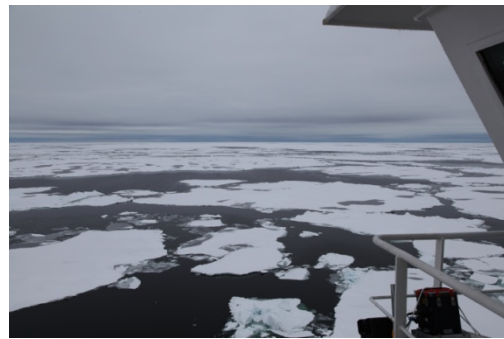
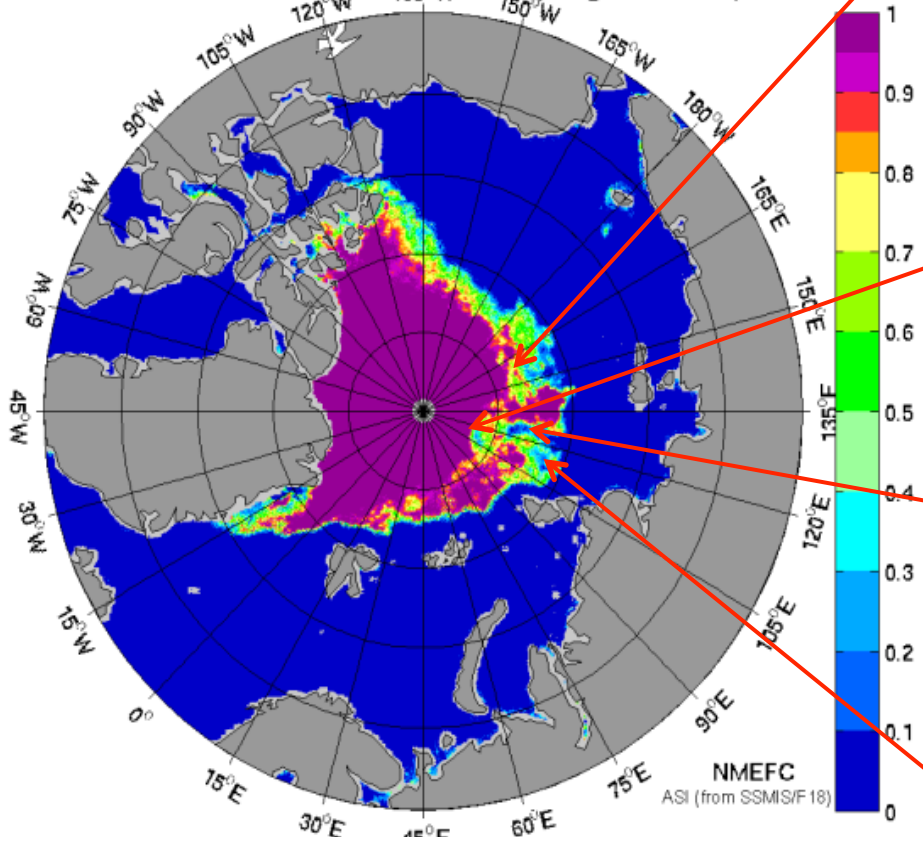
Arctic Sea Ice Concentration (Jul 27 2012)



Arctic Sea Ice Concentration (Jul 27 2012)



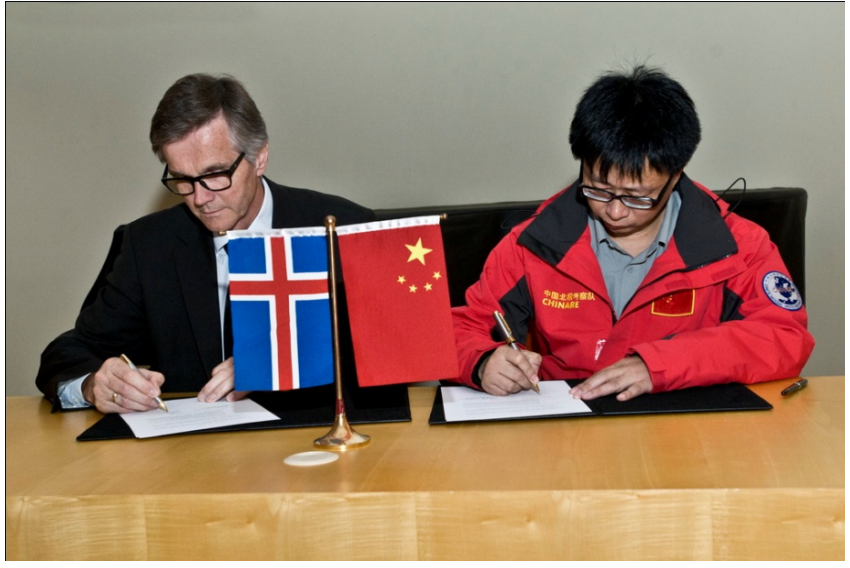
Arctic Sea Ice Concentration (Aug 30 2012)



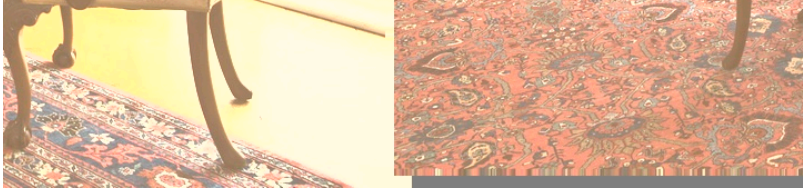


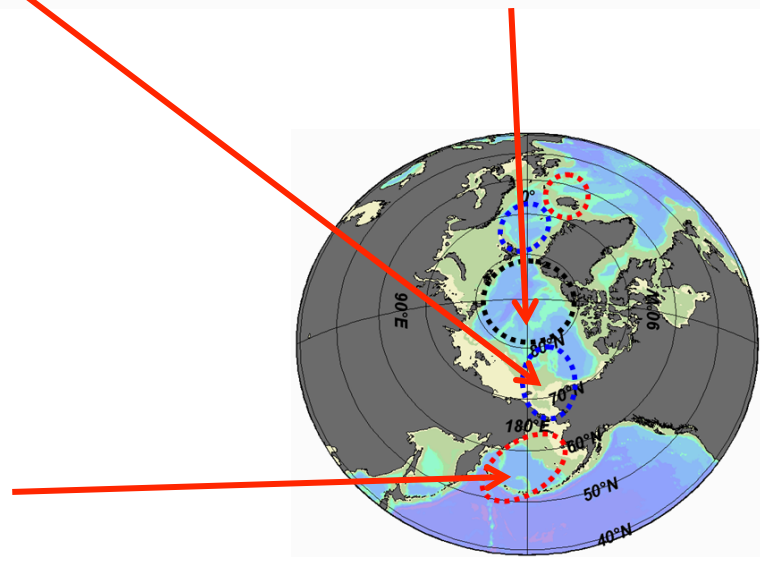
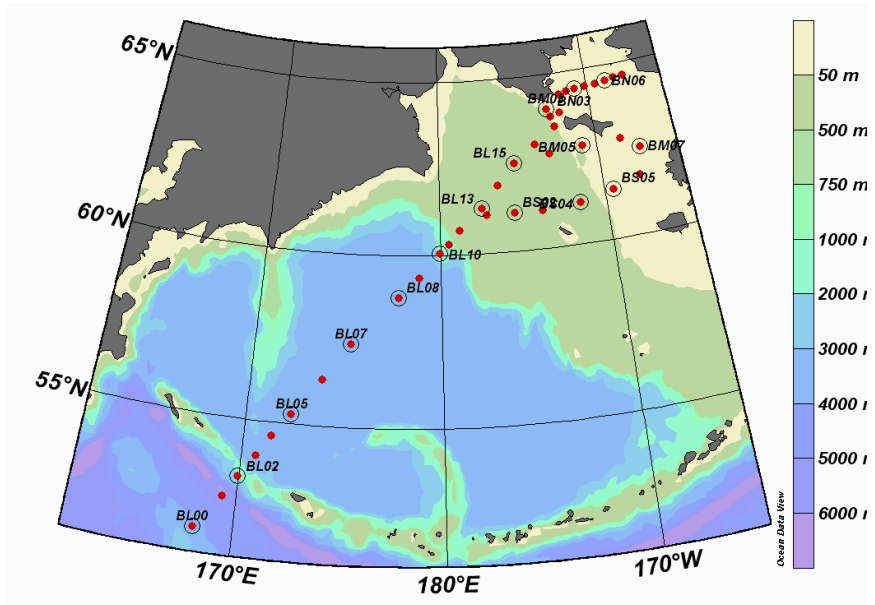
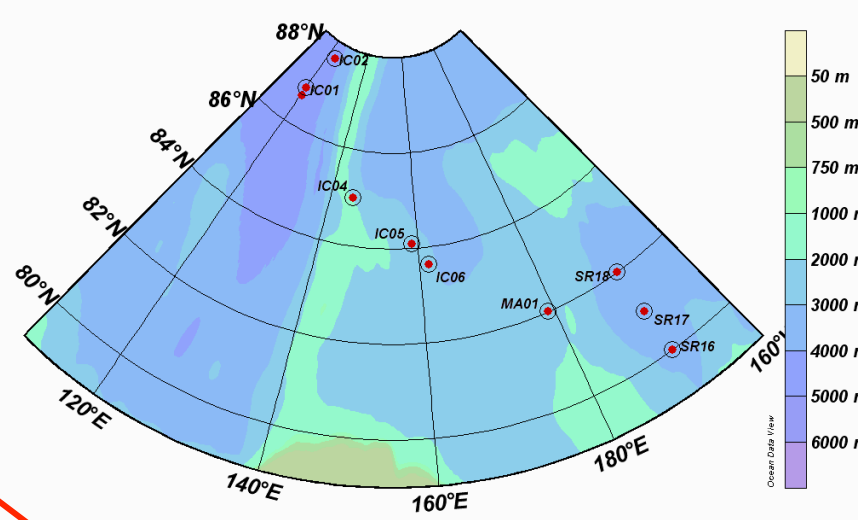
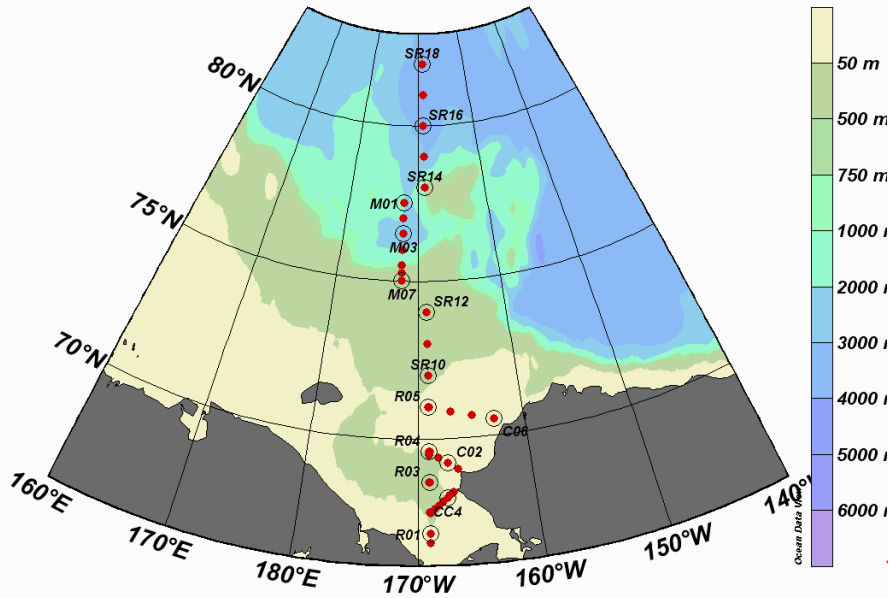
2. Visiting Iceland

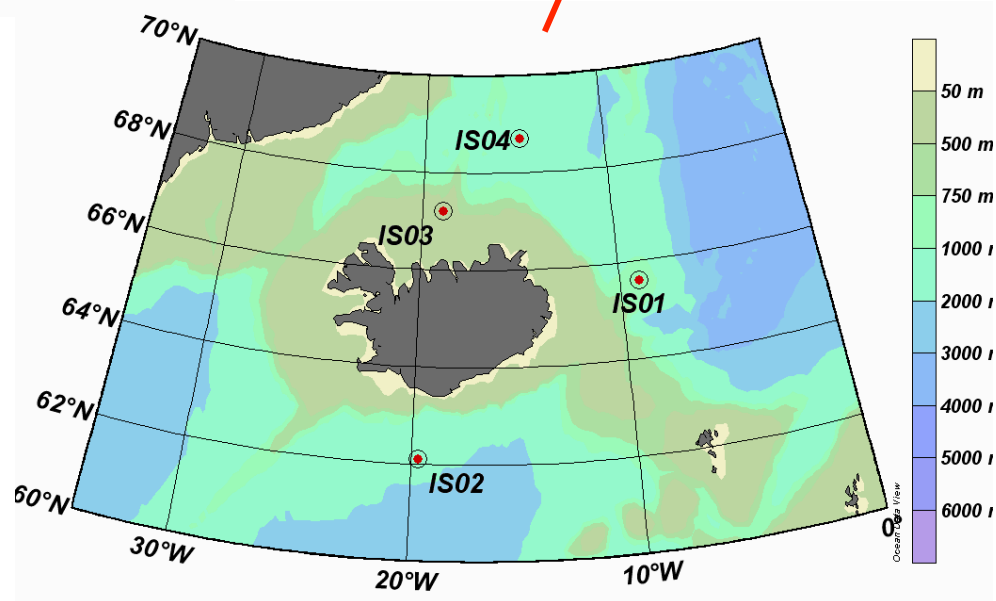
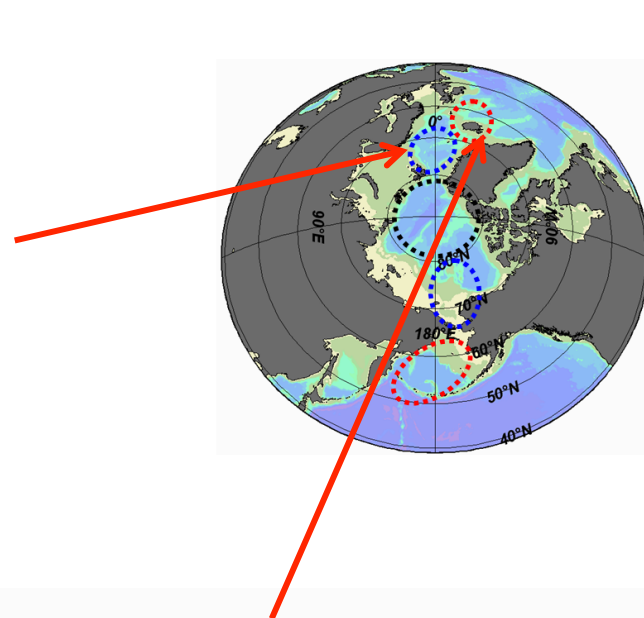
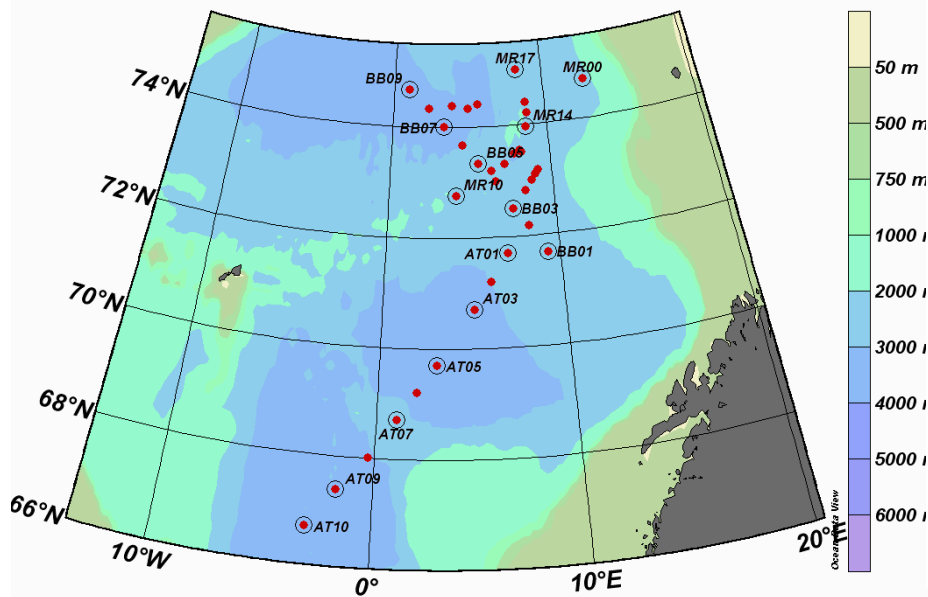












- 98 CTD stations
- 6 ice stations
- A air-ocean coupling mooring system
- 13 ice mooring
- one DBO transect



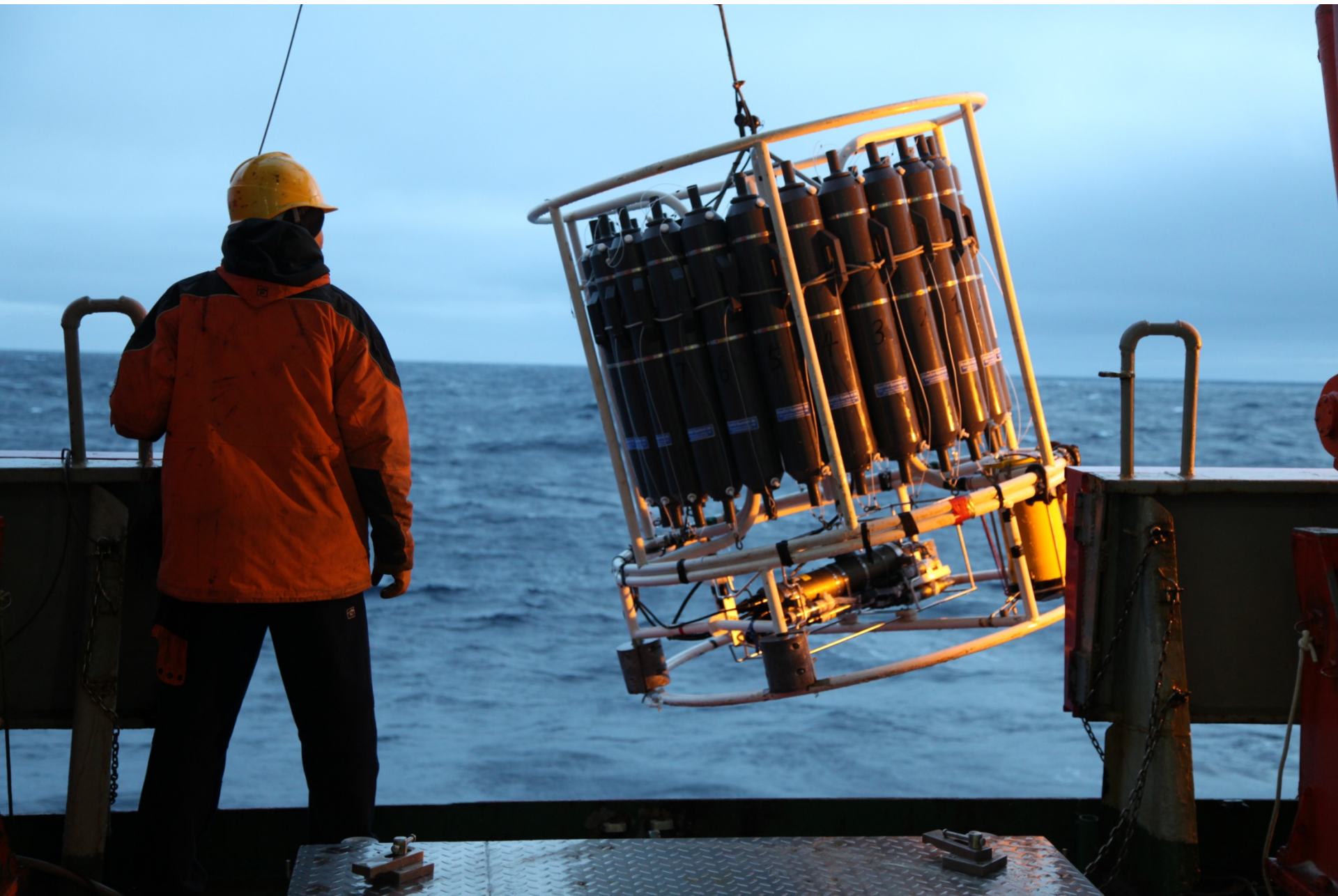








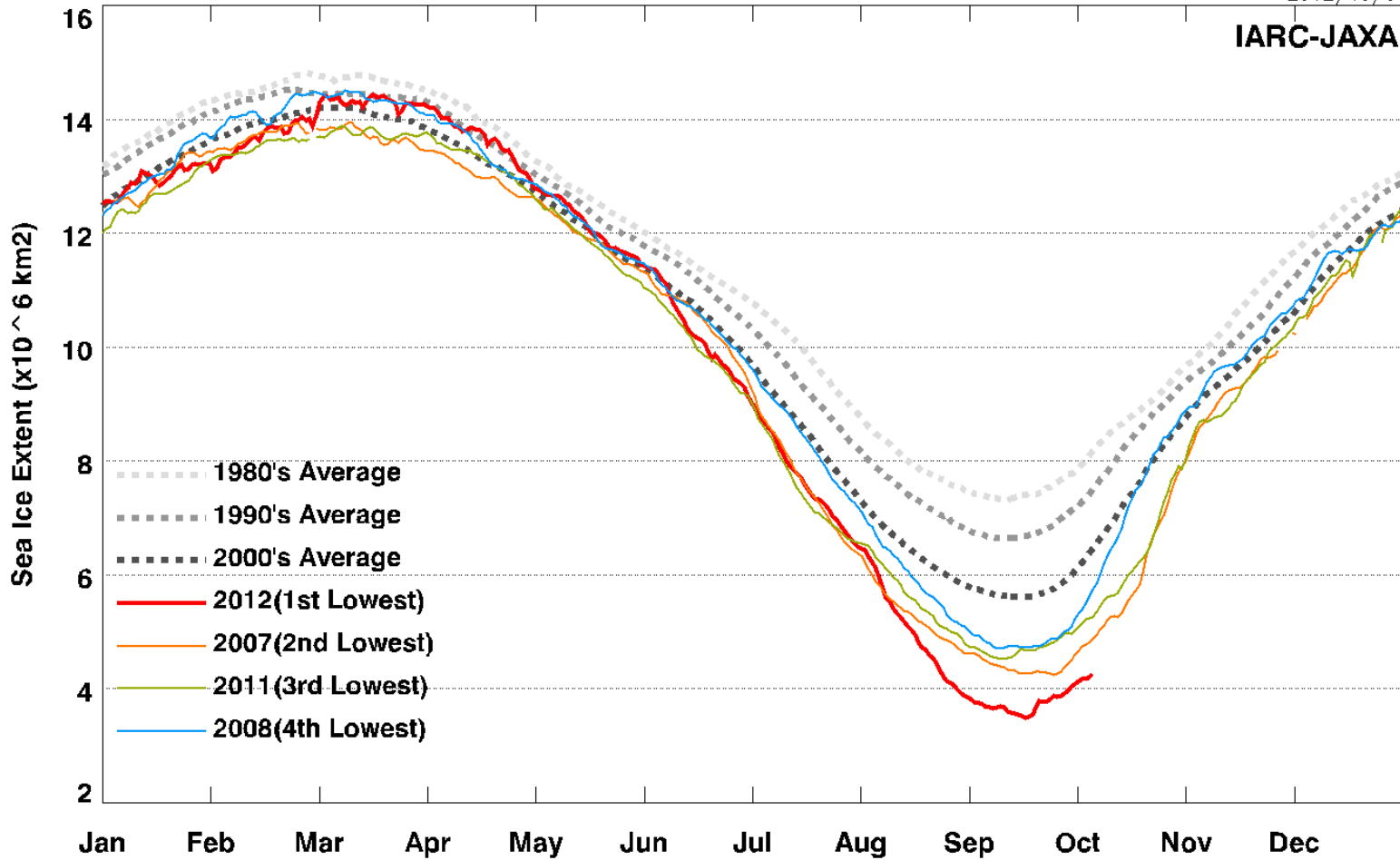




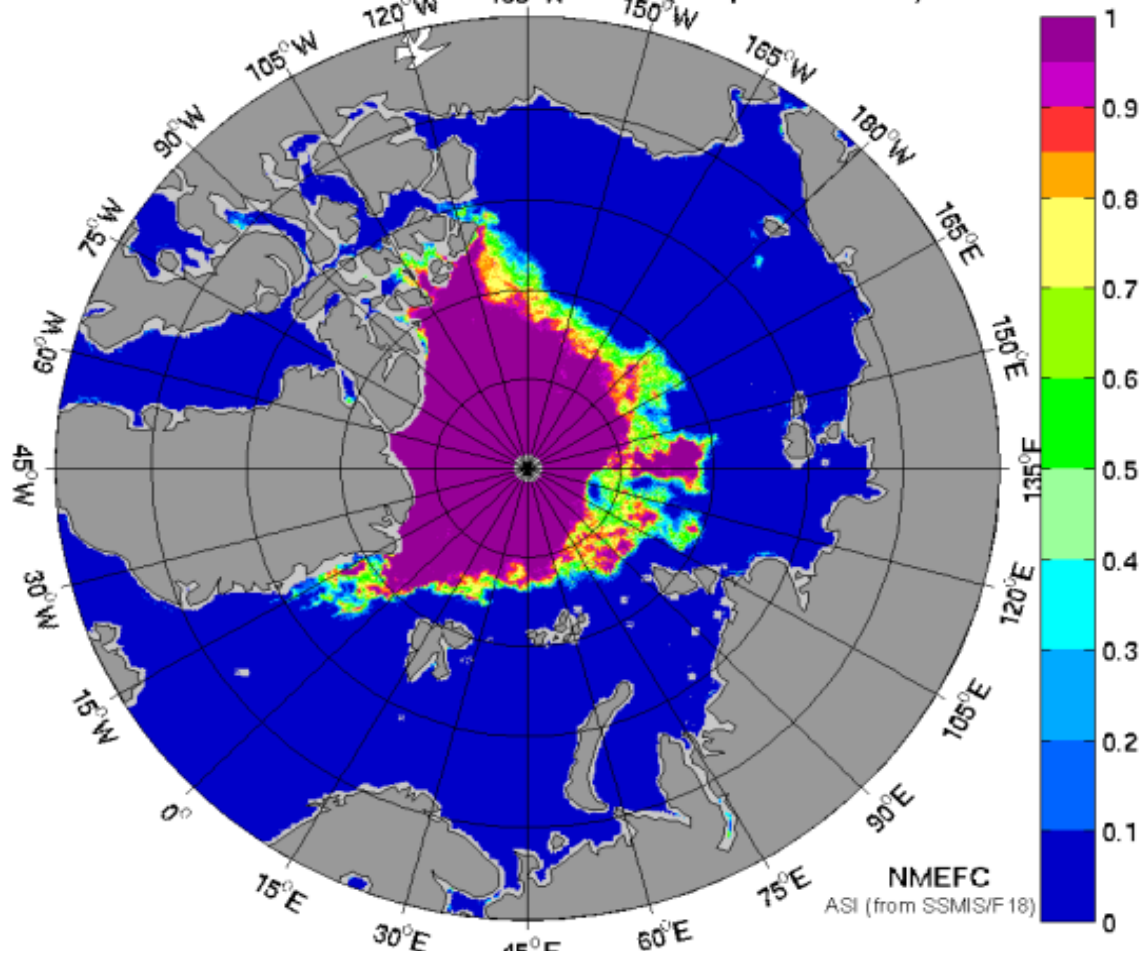
Arctic Sea Ice Extent

2012/10/05

IARC-JAXA



Arctic Sea Ice Concentration (Sep 03 2012)



Plans in 2013 and 2014

- 2013: Joint cruise with Russia, 12 participants??
- 2014: Xuelong's cruise
- 2015 or later: new icebreaker??

Thanks!

