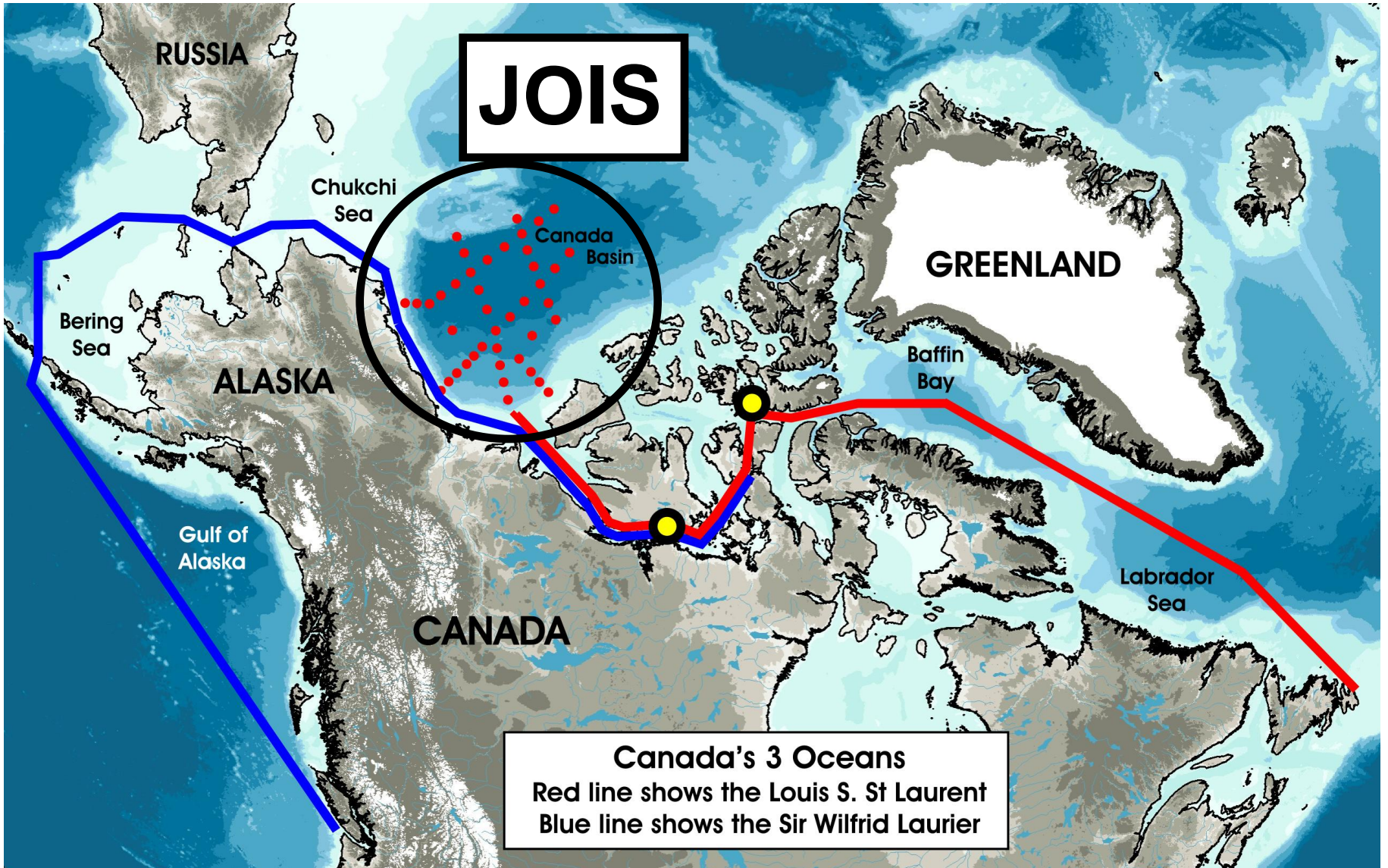




# JOIS



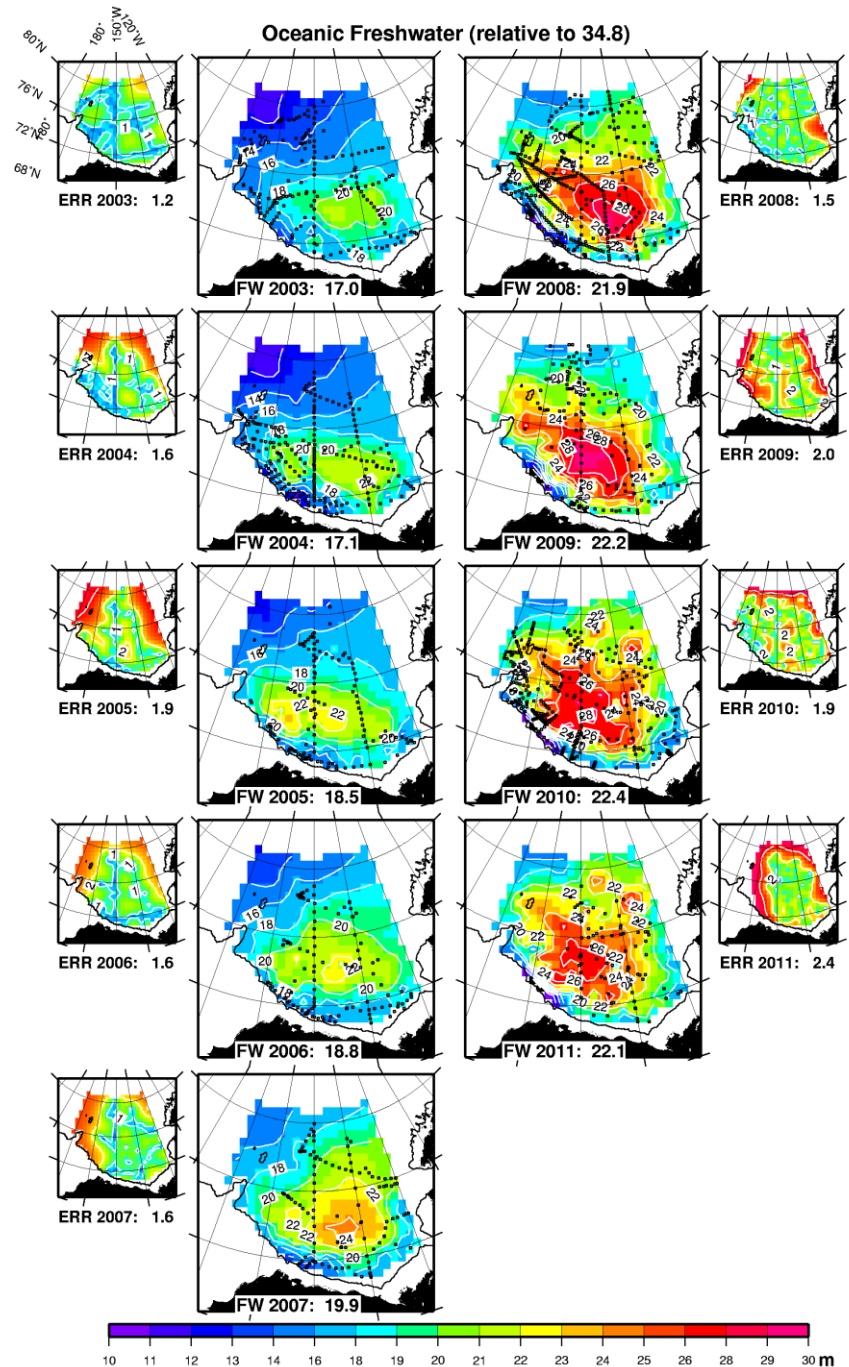
## Canada's 3 Oceans

Red line shows the Louis S. St Laurent  
Blue line shows the Sir Wilfrid Laurier

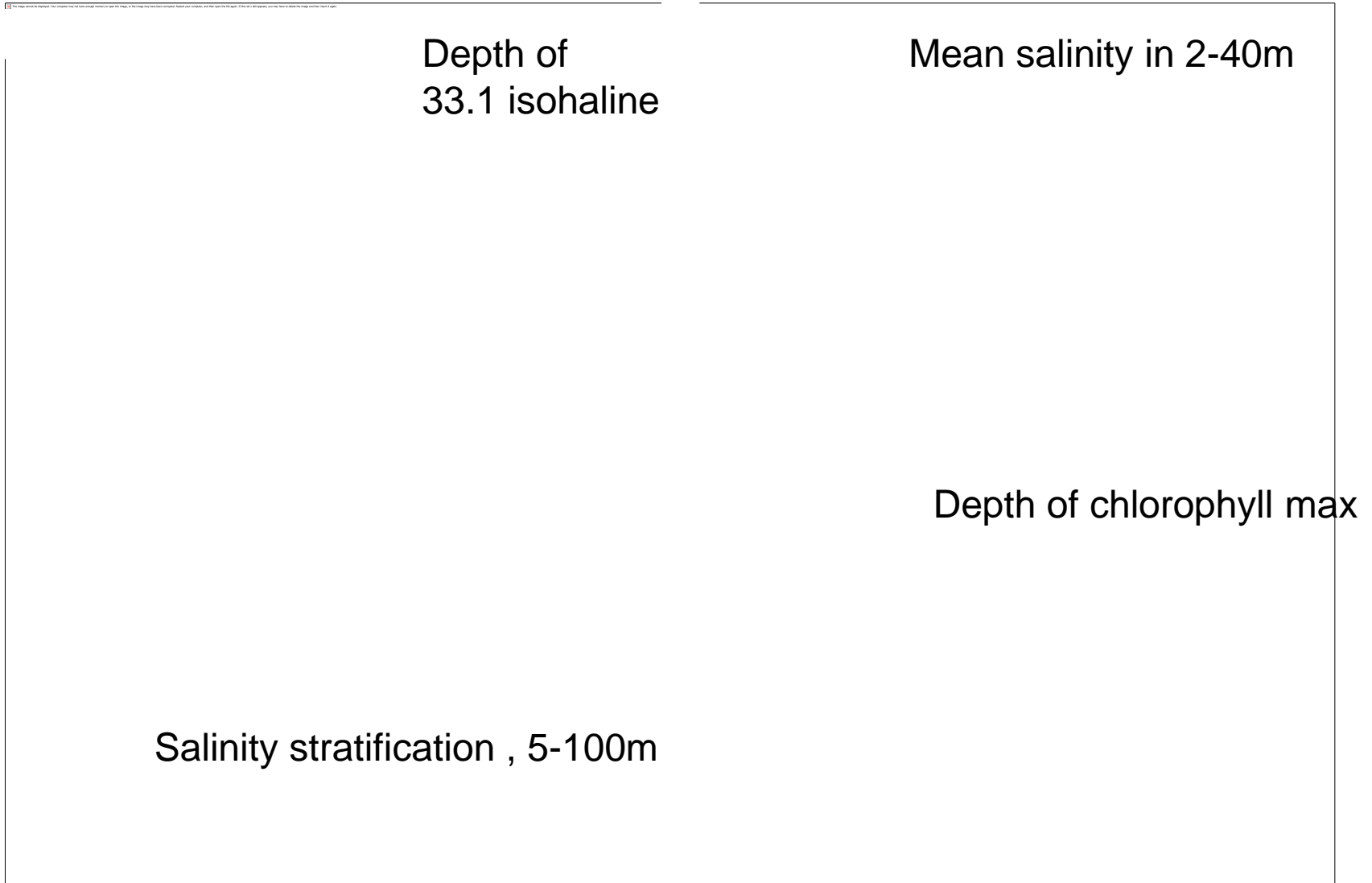
# Freshwater content of the Beaufort Gyre

From Rick Krishfield  
WHOI

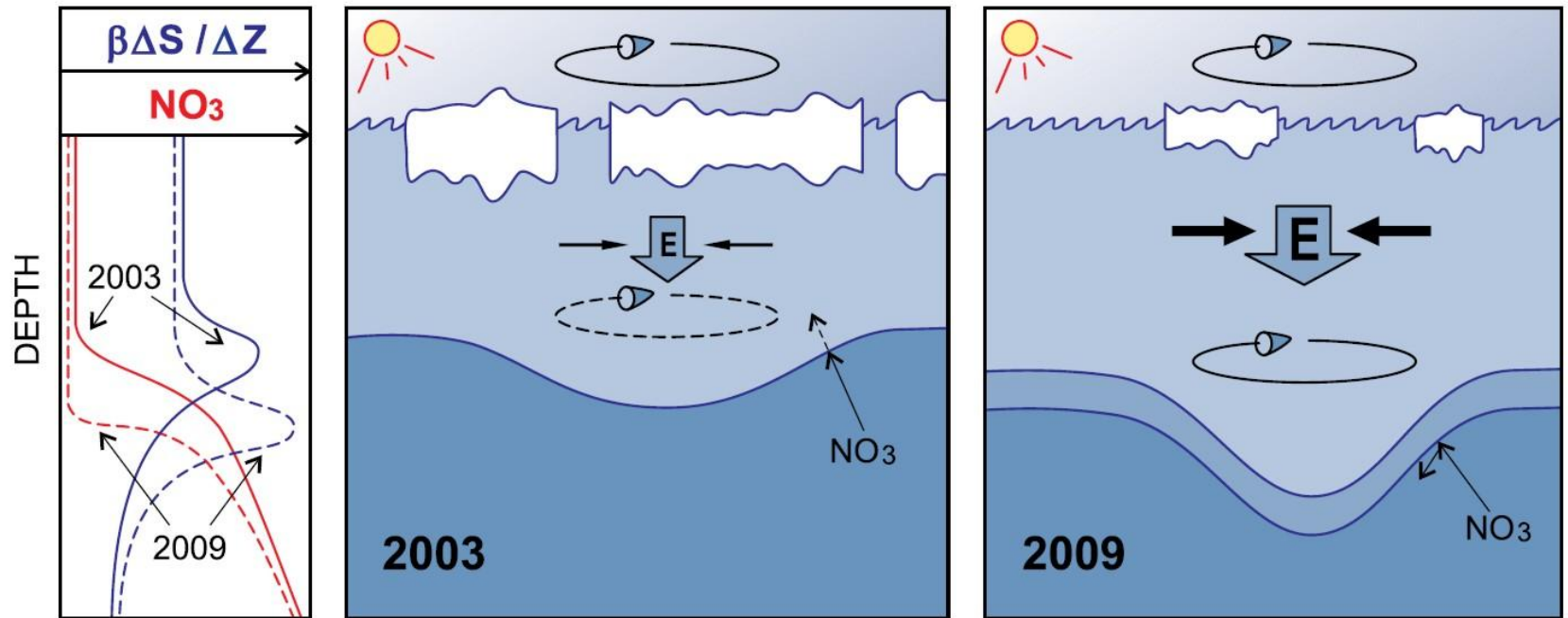
Proshutinsky et al., 2009



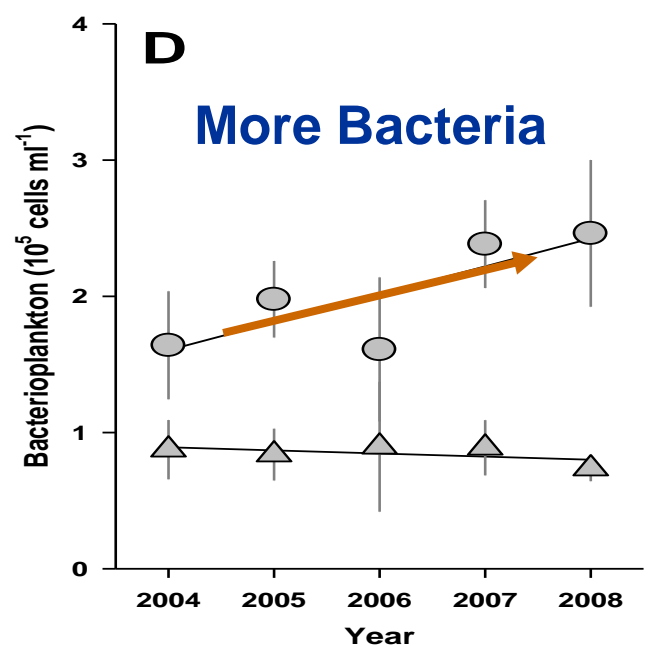
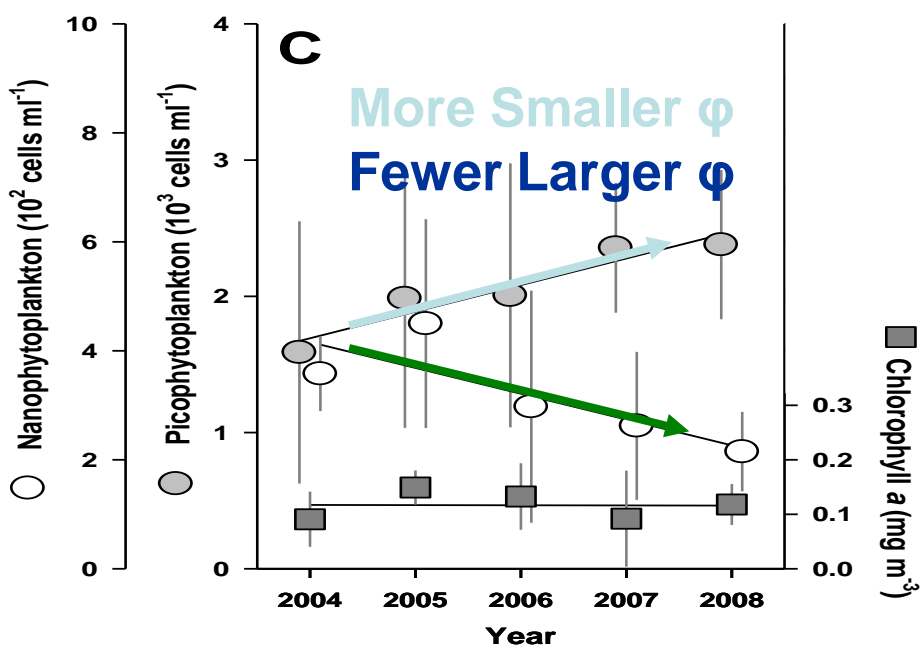
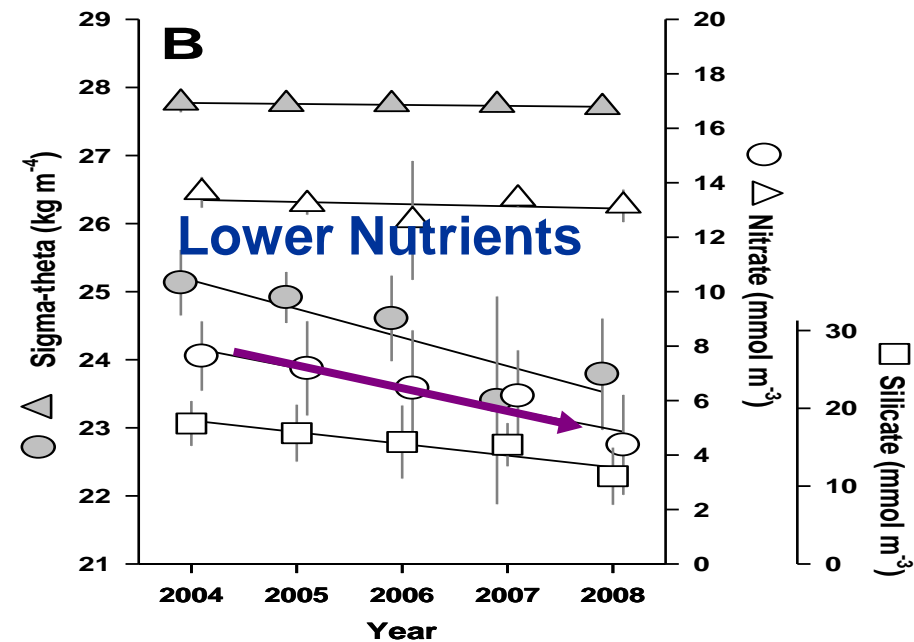
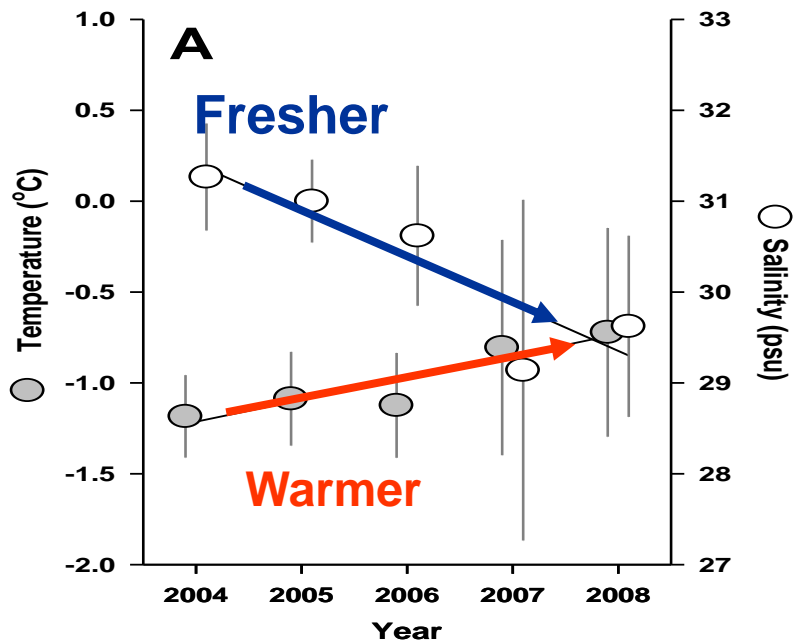
# Time series of 'average' values:



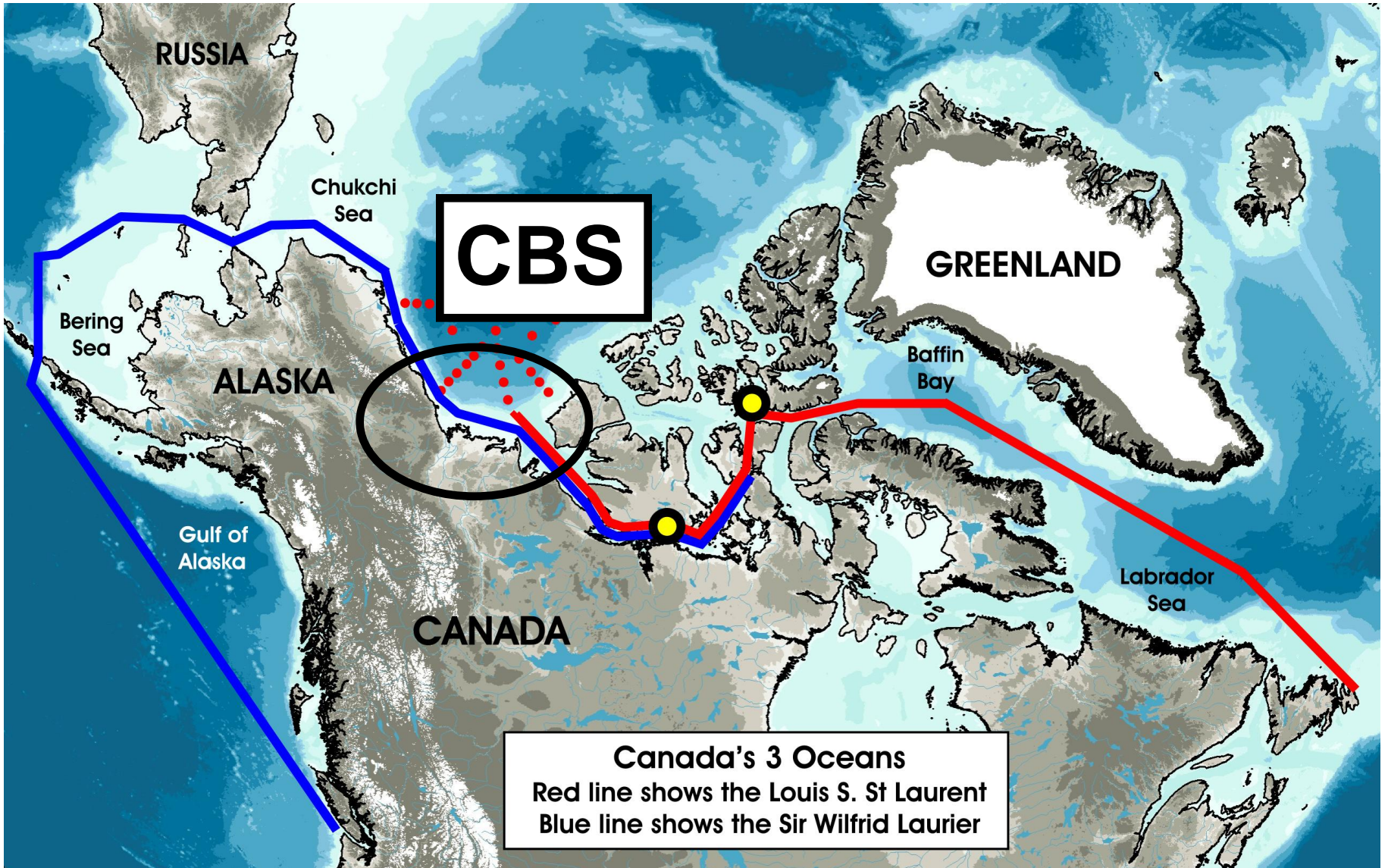




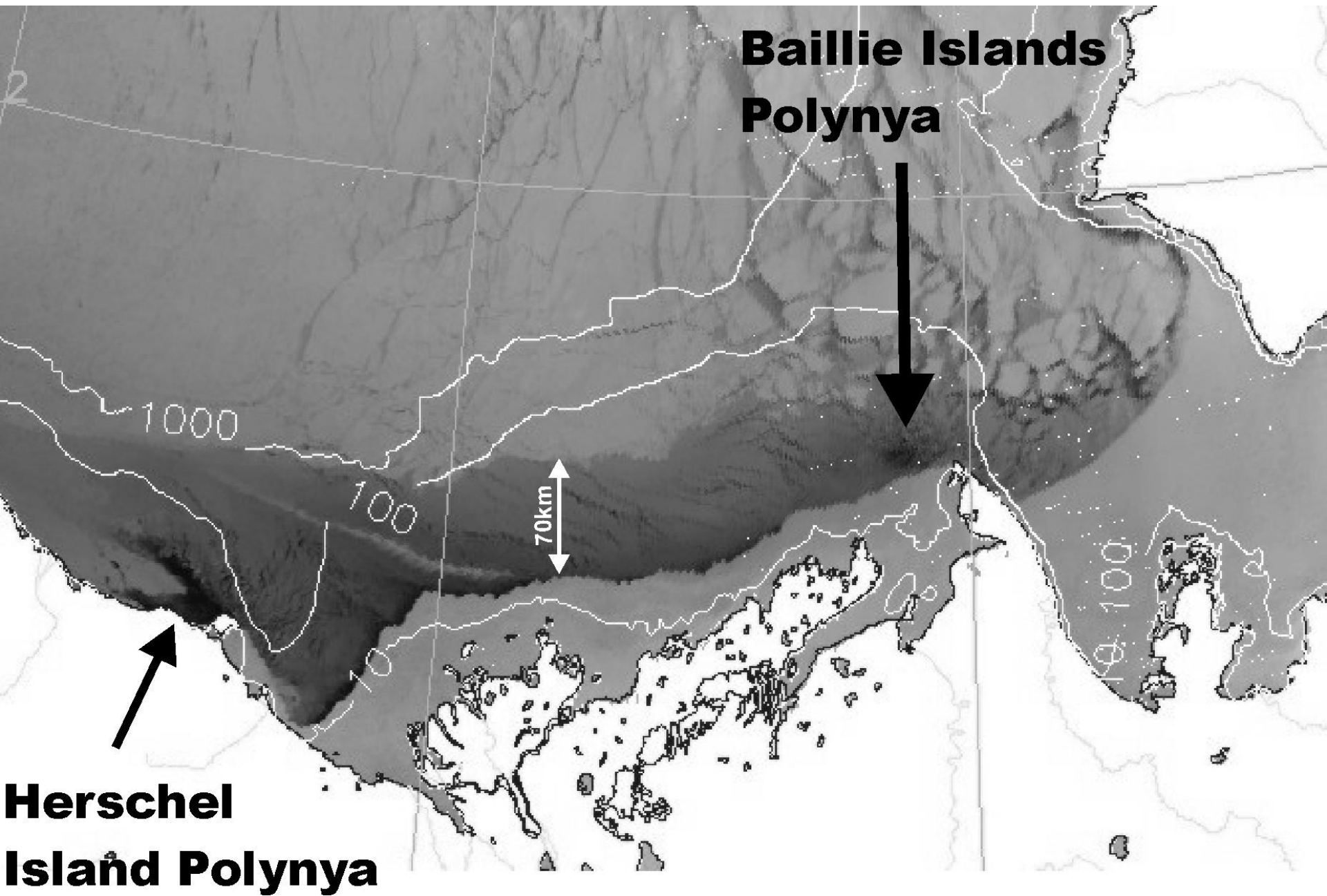
**...thanks to Eddy.**



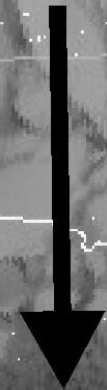
Li, McLaughlin, Lovejoy, Carmack, *Science* (2009)







**Baillie Islands  
Polynya**



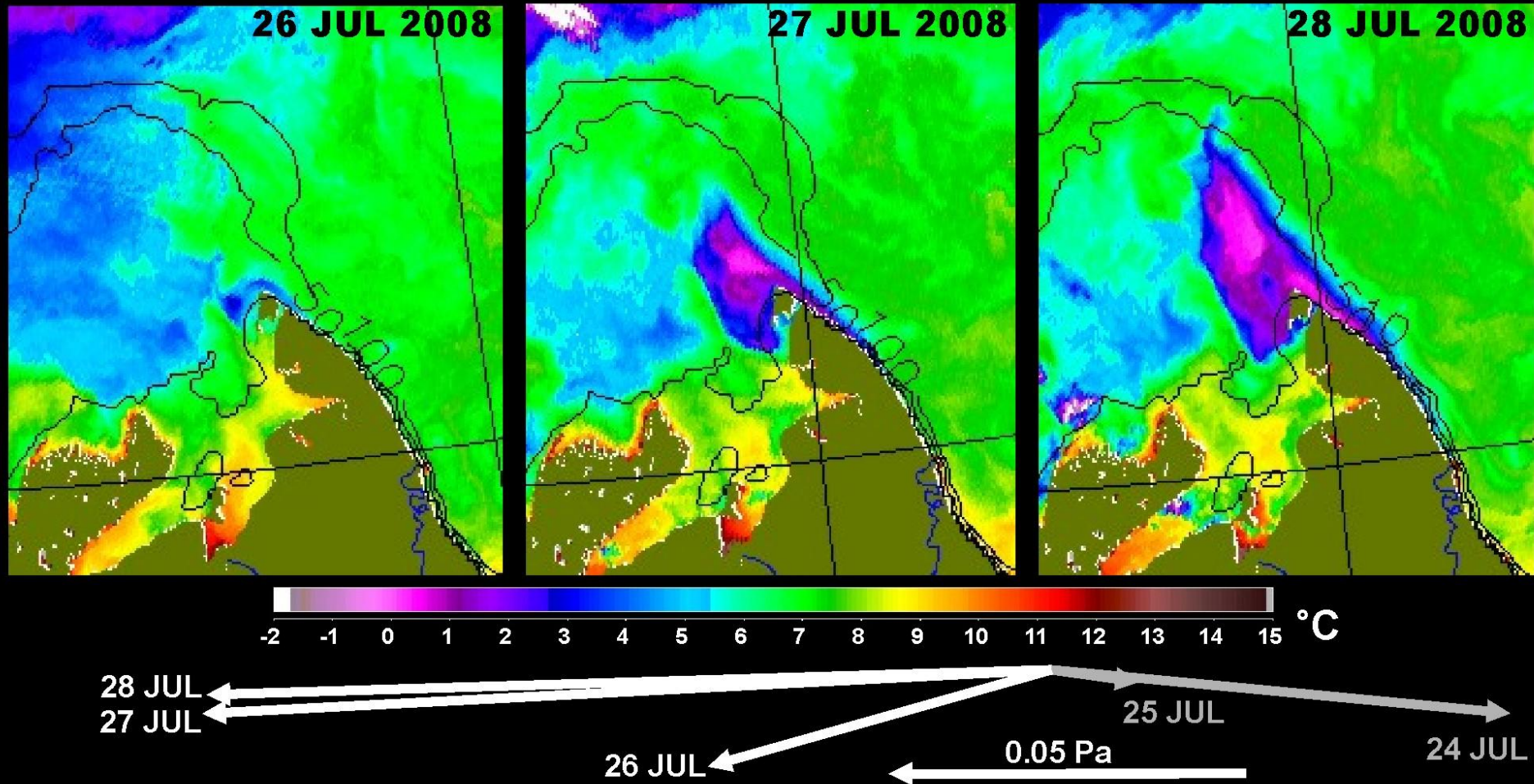
70km



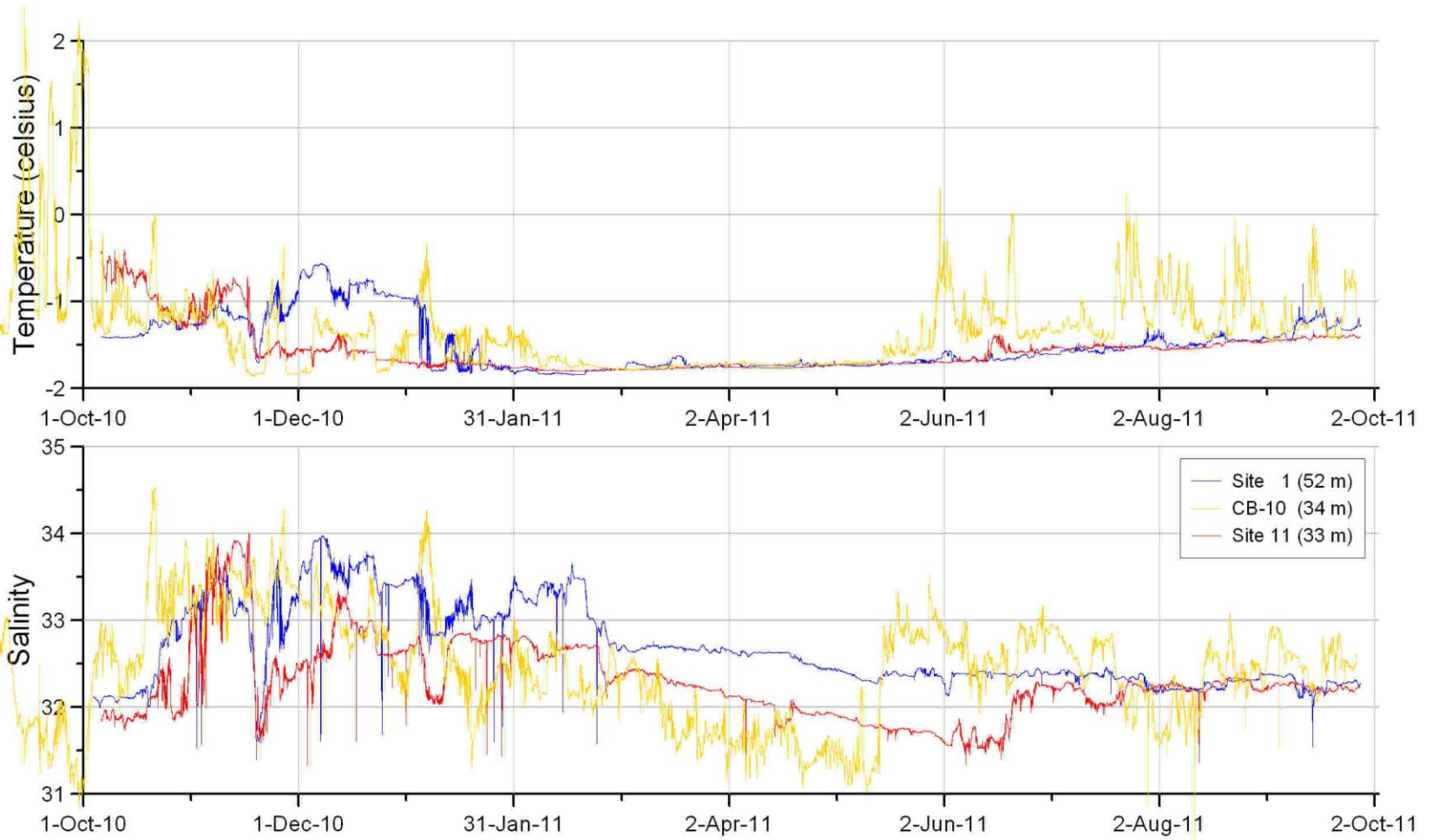
**Herschel  
Island Polynya**



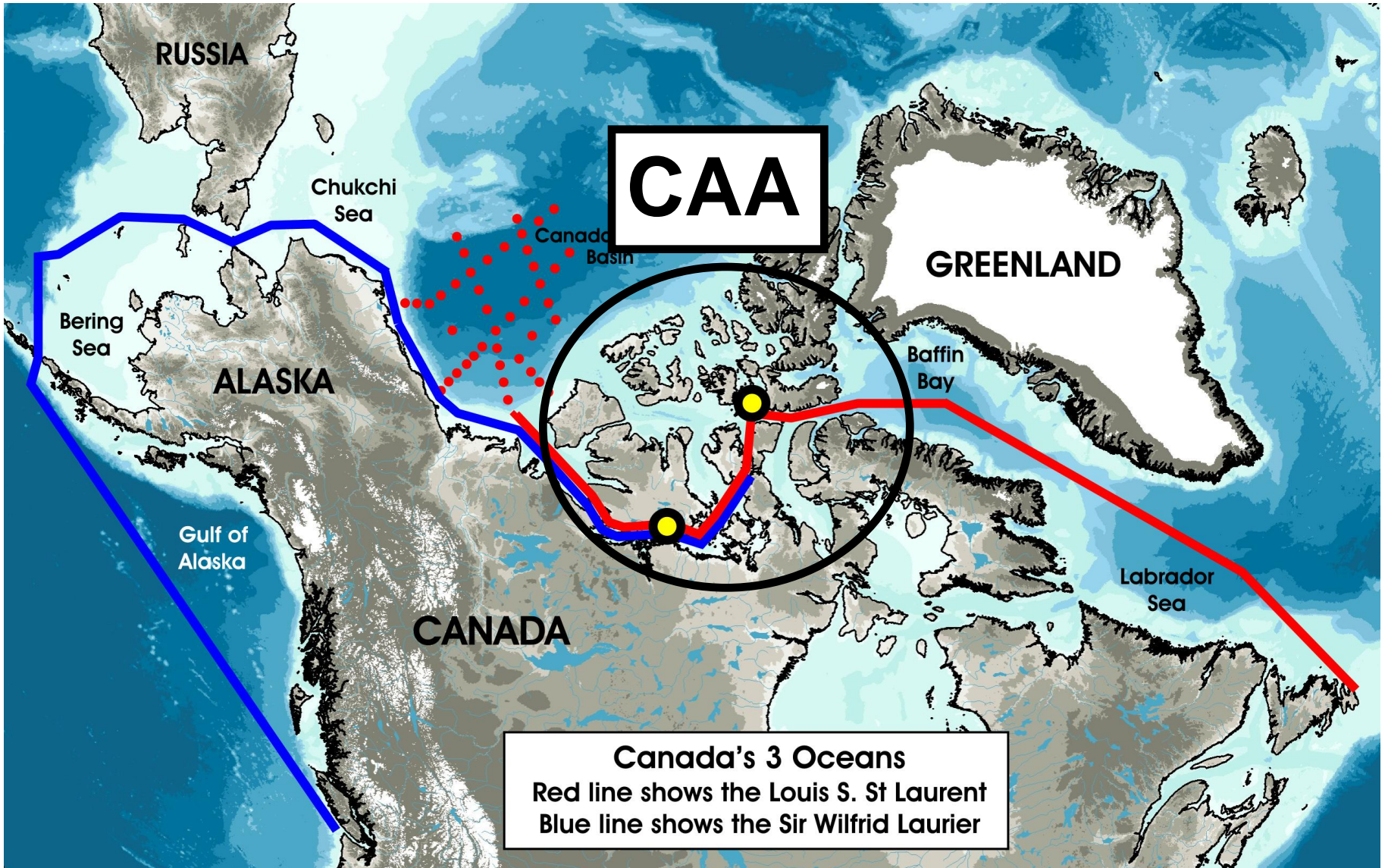
Development of upwelling at Cape Bathurst as the wind turns to blow from the east. The upwelled water is cold and nutrient-rich.



# Near bottom (34m) temperature and salinity at Cape Bathurst:



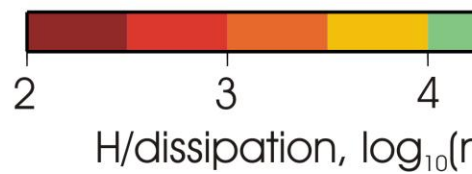
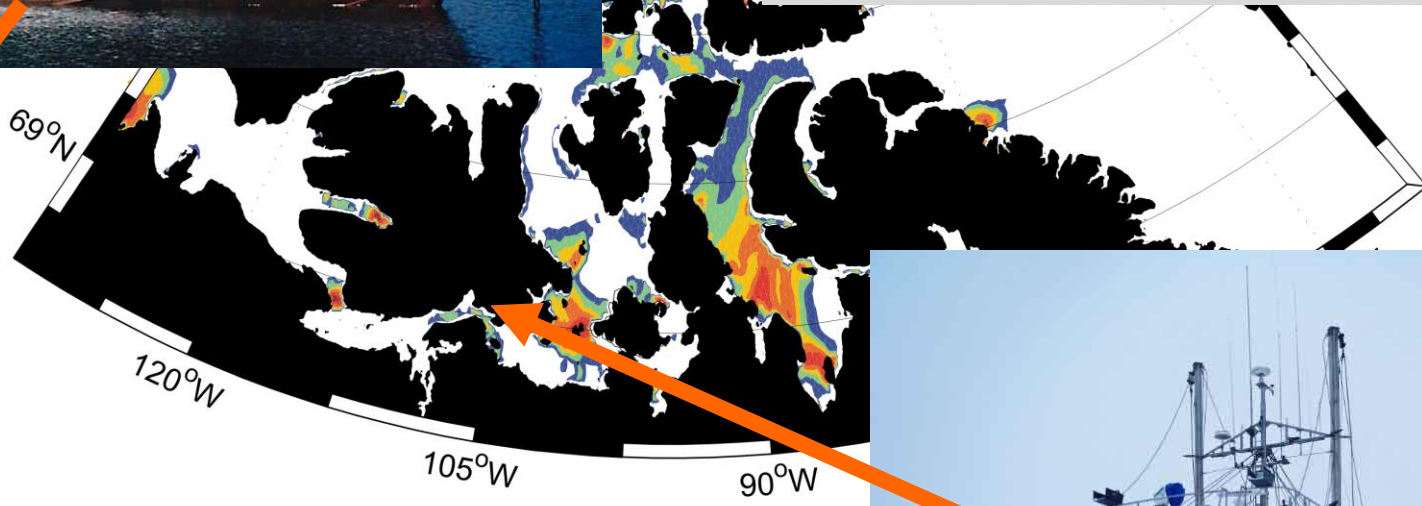




**CAA**

**Canada's 3 Oceans**  
Red line shows the Louis S. St Laurent  
Blue line shows the Sir Wilfrid Laurier





From Charles Hannah (Hannah et al. 2009)