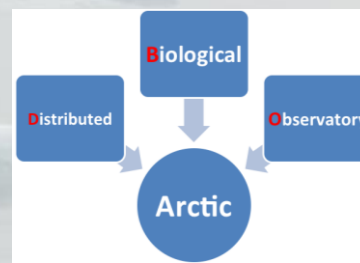


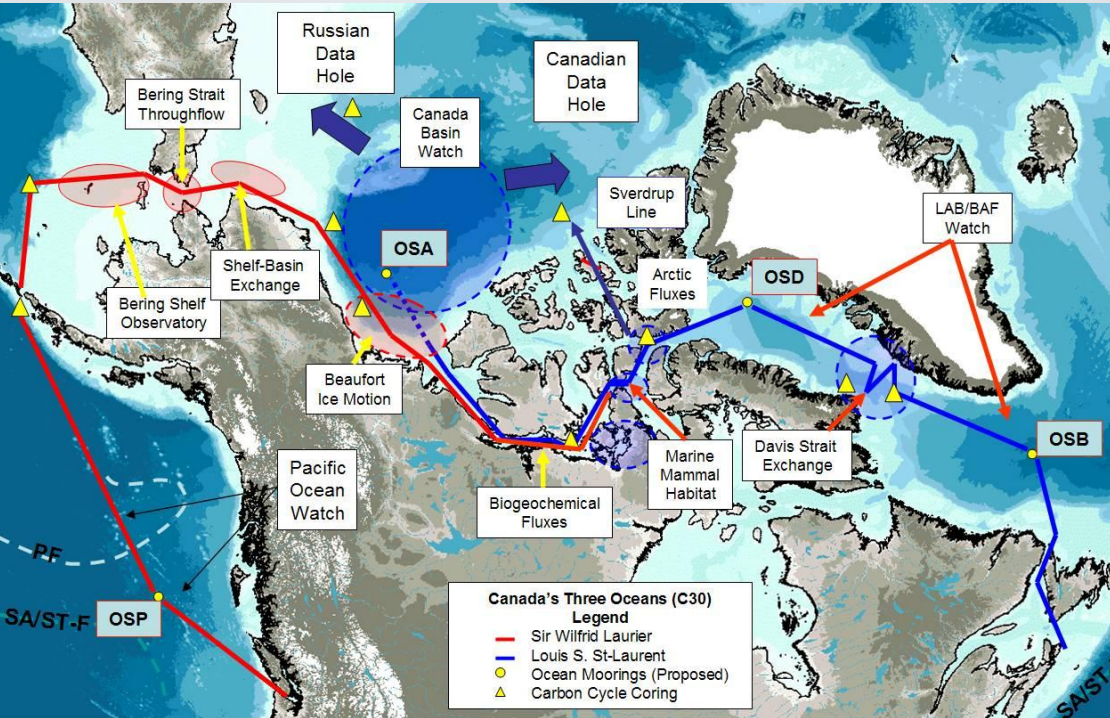
Benthic Time Series Collections within the DBO Effort

Jacqueline M. Grebmeier, Lee W. Cooper, and Monika Kedra

Chesapeake Biological Laboratory, University of Maryland
Center for Environmental Science, Solomons, Maryland, USA

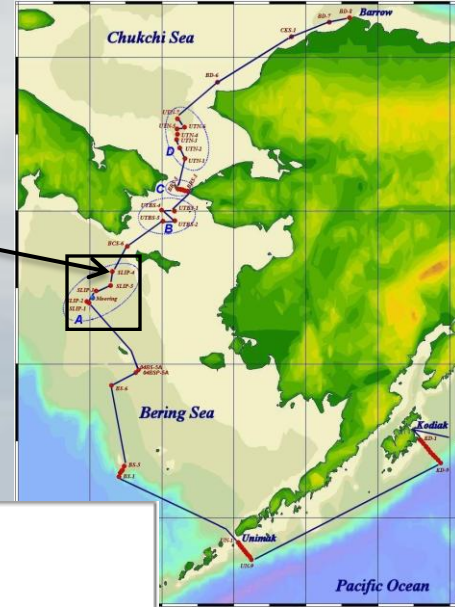


CCGS Sir Wilfrid Laurier Pacific C30

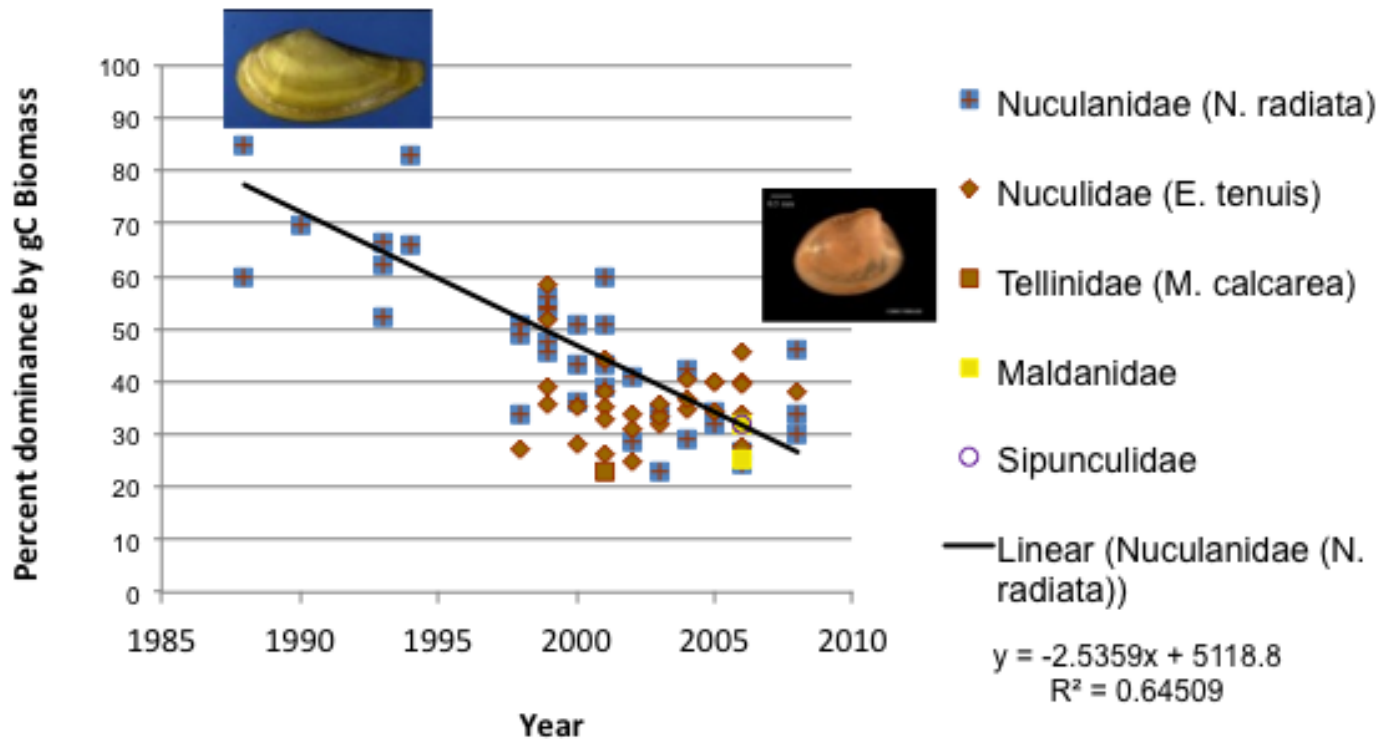




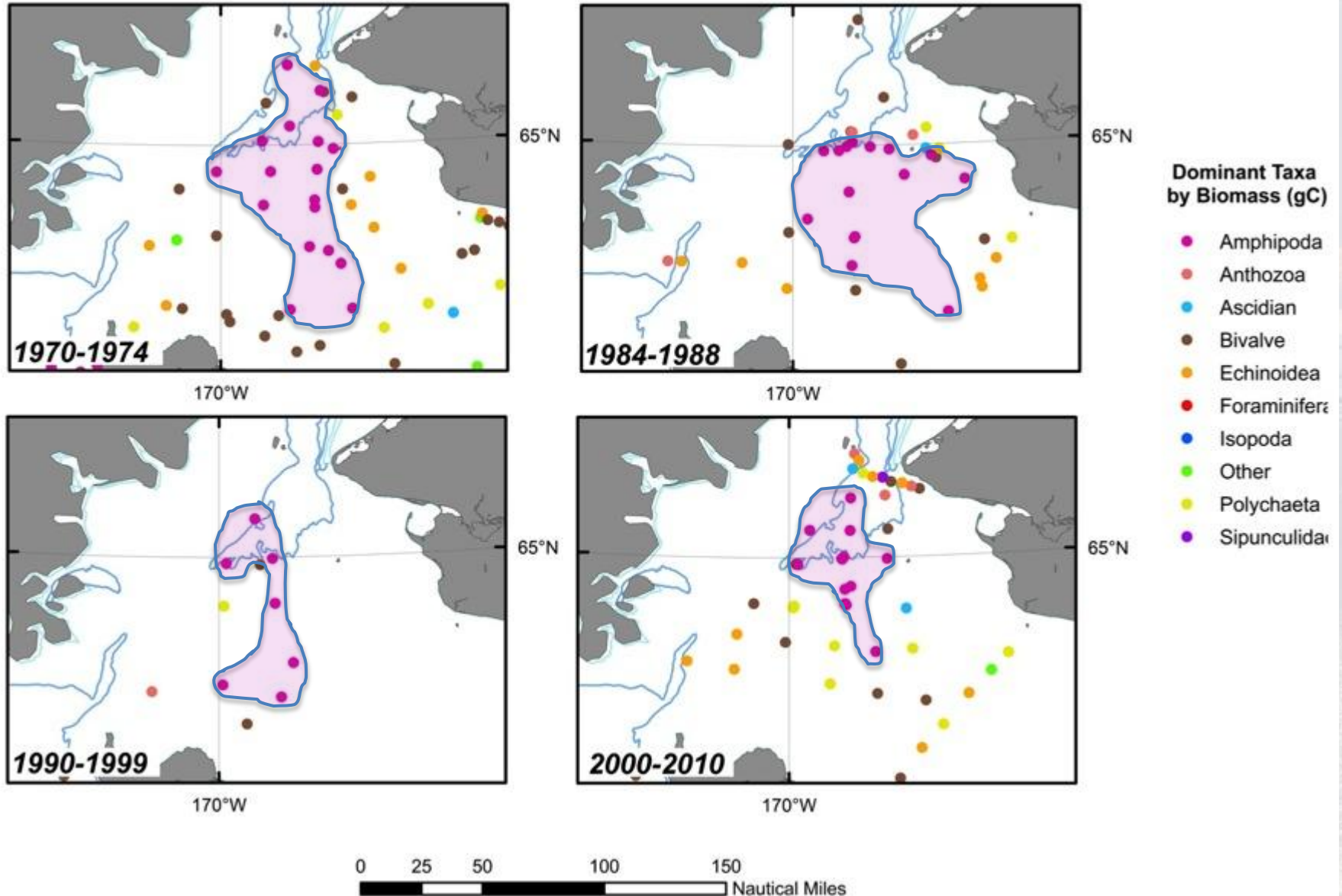
DBO1: Decline in dominant nuculanid bivalve biomass 1990-2000, with increase nuculid bivalves at two sites since 2000 (finer sediments)



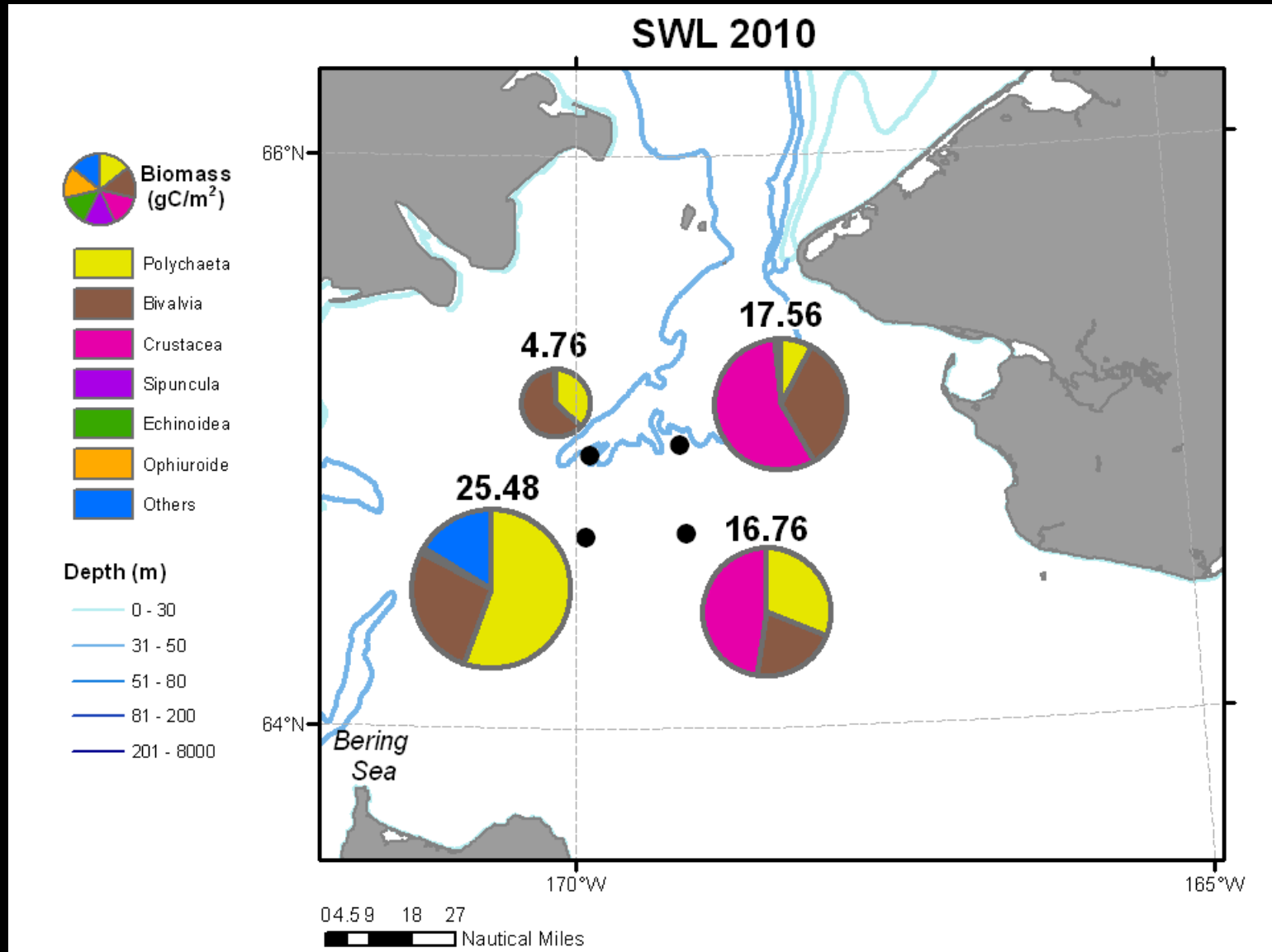
St. Lawrence Is. Polynya % Dominance (by gC) of Most Dominant Fauna



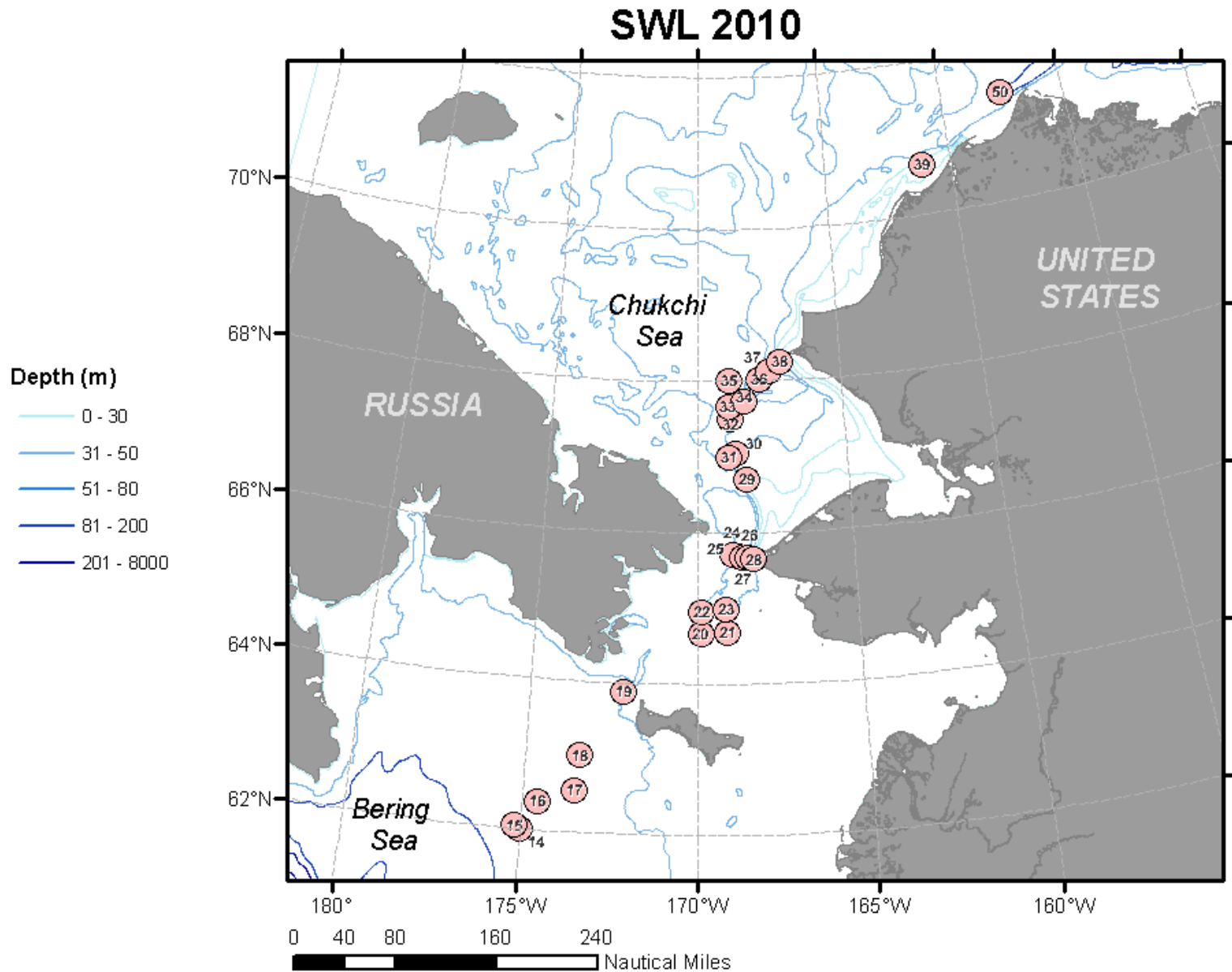
DBO2: “Footprint” of ampeliscid amphipod prey contracting spatially



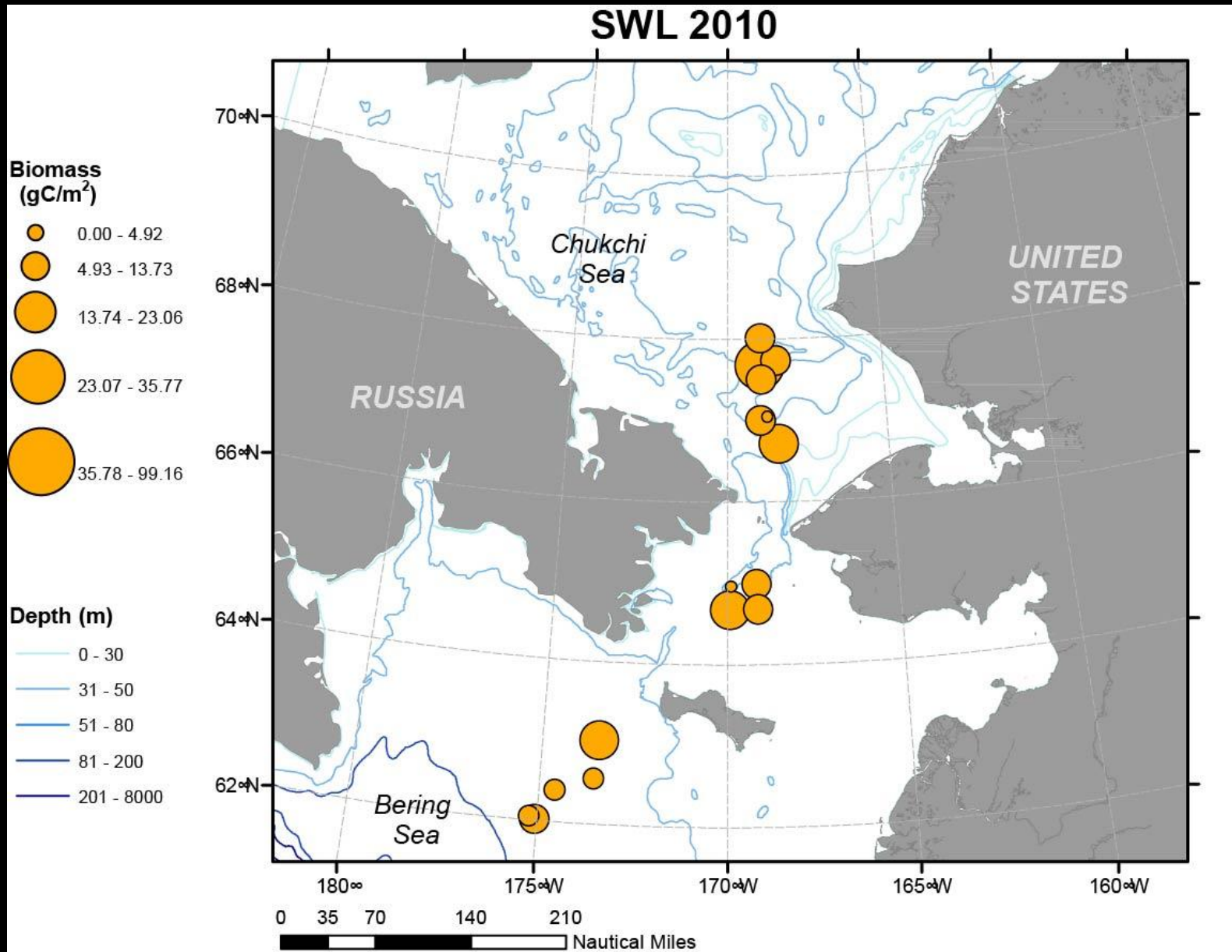
DBO 2-Chirikov Basin benthic macroinfaunal biomass-July 2010



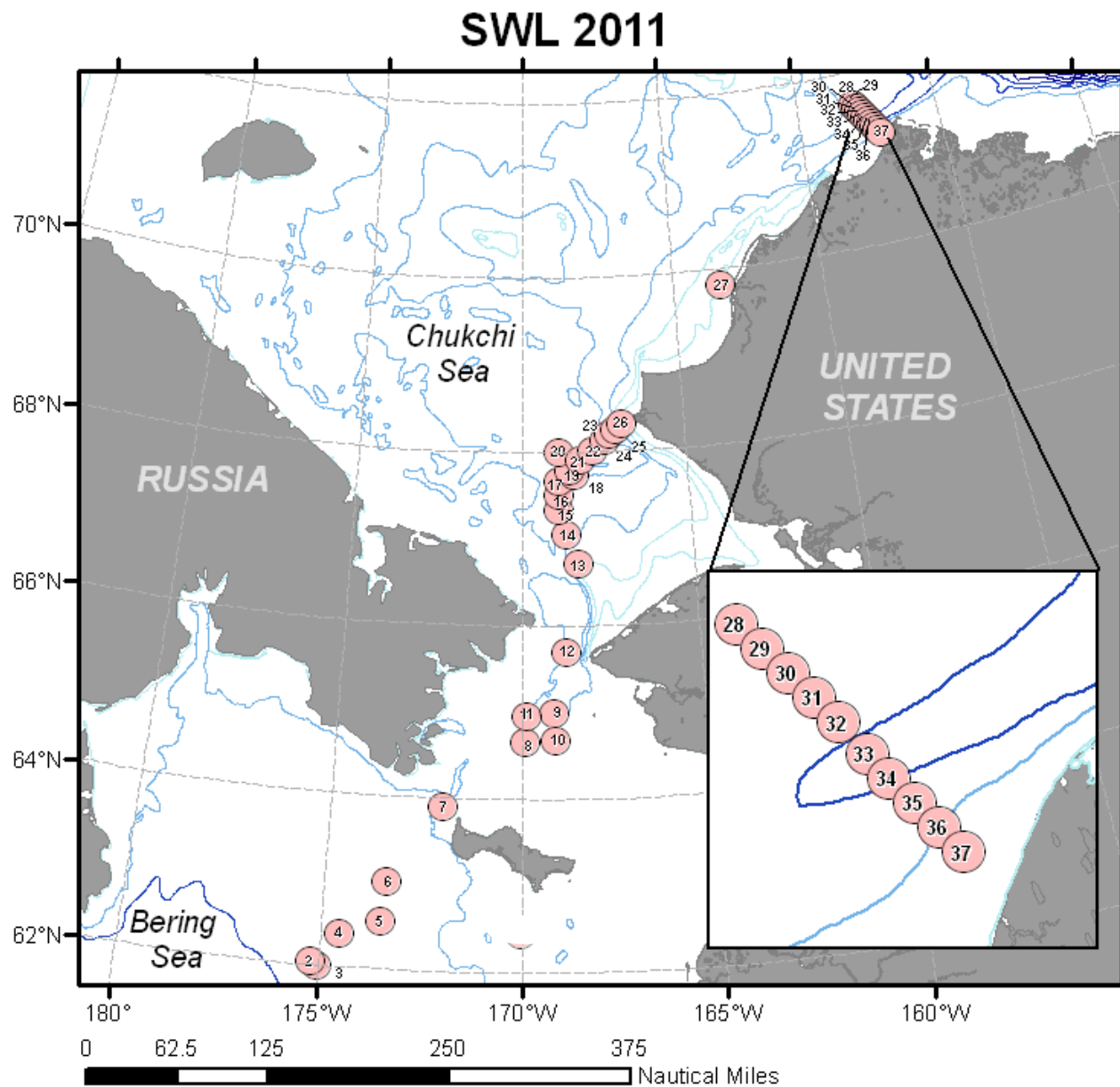
SWL2010 Cruise map



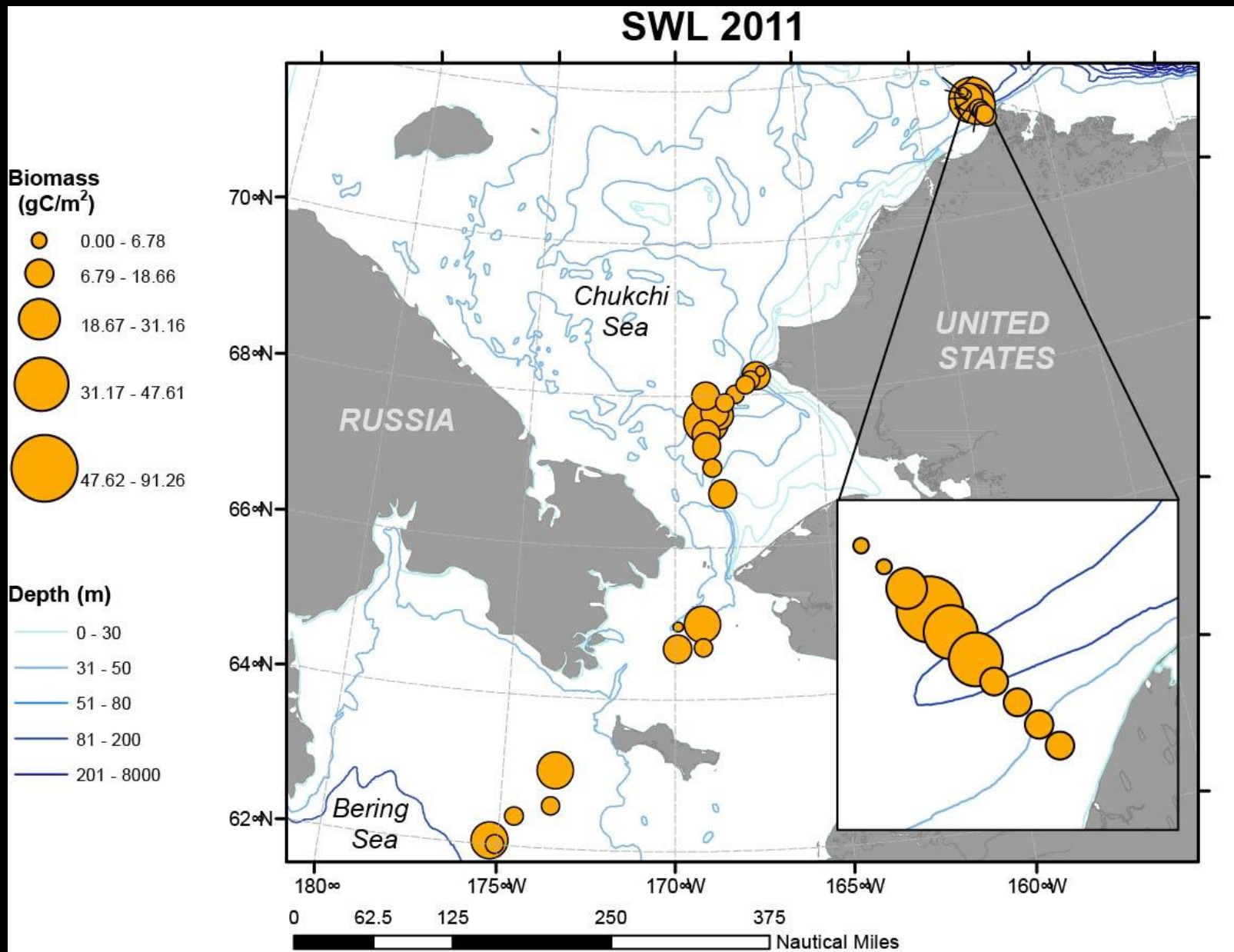
SWL 2010 Benthic Biomass (gC/m²)



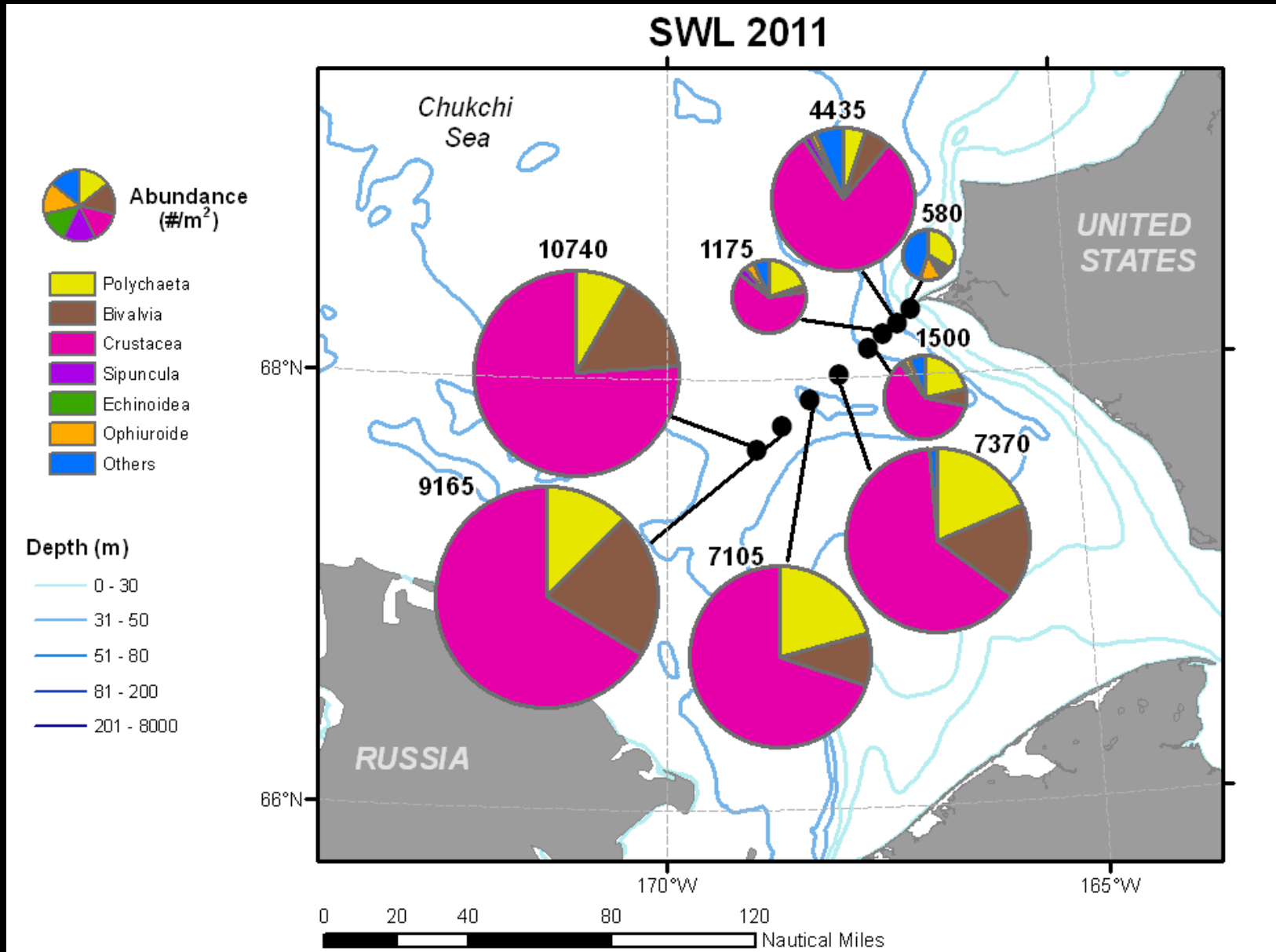
SWL2011 Cruise map



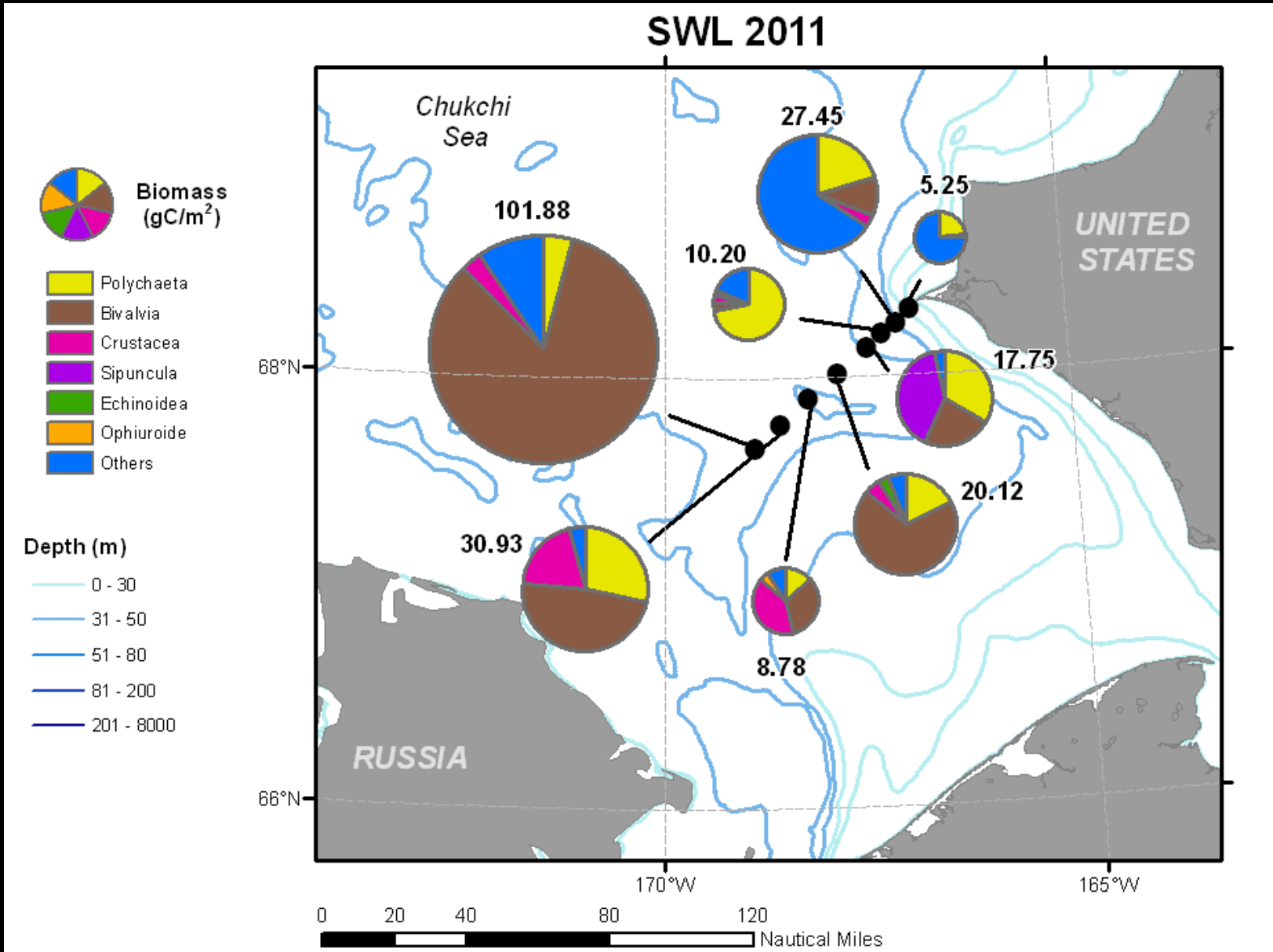
SWL 2011 Benthic Biomass (gC/m²)



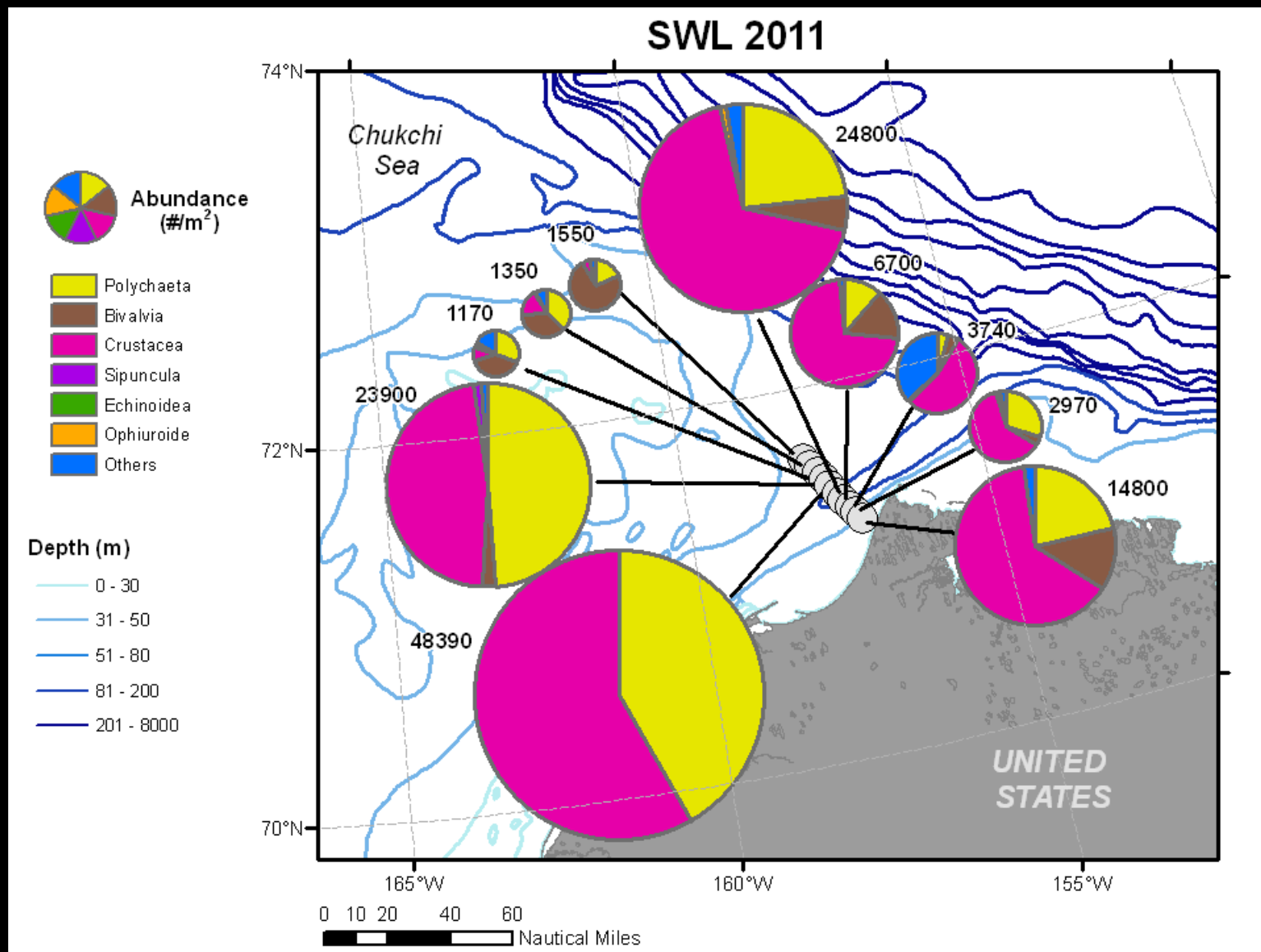
DBO 3-So Chukchi Sea Benthic macroinfaunal abundance-July 2011



DBO 3-So Chukchi Sea Benthic macroinfaunal biomass-July 2011



DBO 5-Barrow Canyon benthic macroinfaunal abundance-July 2011



Thank you.

Acknowledgements: Many thanks to Linton Beaven, Christian Johnson, Arvind Shantharam, Stephanie Soquez, Mike Sudivan, and Lisa Wilt. Chirk Chu provided valuable data processing skills. Funding provided through the US National Science Foundation and National Oceanographic and Atmospheric Administration.